



REGULAR LIMITED EDITION

GREENBUD

— SELECTED SEEDS —



Inhale. Hold it. Share.



NICE CHAP, NO GENERAL

SMILE

NICE CHAP, NO GENERAL



GREENBUD

— SELECTED SEEDS —

REGULAR

CULTIVATING EXCELLENCE SINCE OUR BEGINNINGS

Greenbud Seeds. **Genetics you trust, cultivated with precision.**

Founded in 2015, Greenbud Seeds is built upon a team of professionals and experienced growers with a long-standing background in the world of cannabis. From the very beginning, our work has followed a clear and consistent objective: to develop and offer high-quality feminized seeds through carefully controlled production and an unwavering commitment to excellence.

All our production is carried out indoors in Europe, under strictly controlled conditions. Every stage of the process is monitored in detail—from light cycles and temperature to humidity and nutrition—ensuring the stability, vigor, and uniformity of each genetic line. Carefully selected mother plants are preserved and maintained to guarantee a solid, reliable, and consistent genetic foundation across all our batches.

Greenbud Seeds produces its seeds exclusively from elite cuttings, resulting in plants known for their strong performance, high productivity, and consistent behavior across different growing environments. Our catalogue brings together time-tested classic strains and exclusive new genetics developed through limited-edition crosses, aimed at growers seeking authentic flavours, potency, productivity, and distinctive character.

Each variety in our collection delivers resin-rich, aromatic, and highly productive

plants, with different indica and sativa dominances. Our genetics are available in Feminized, Autoflowering, Early Version, and Regular formats. Every line is selected according to strict quality criteria, following years of research focused on identifying specimens with exceptional hybrid vigor and refined organoleptic profiles.

Our seed selection process is meticulous and entirely manual. Germination tests consistently exceed a 95% success rate, ensuring that only the finest seeds reach our customers. We apply a highly reliable feminization process, guaranteeing an exceptionally high percentage of female plants when grown under proper conditions.

In 2025, to mark our 10th anniversary, we introduced a new packaging design developed to protect seeds from environmental fluctuations and to preserve their quality over time. In parallel, temperature- and humidity-controlled storage conditions ensure that each seed retains its full germination potential until the moment it reaches the grower.

Our commitment remains unchanged since day one: to provide exclusive, productive, and top-quality genetics, supported by rigorous work and the passion of a team that understands exactly what growers expect from a trusted seed bank.



Inhale. Hold it. Share.
SMILE

Bruce Banner is a powerful modern hybrid built from the celebrated cross Strawberry Diesel x OG Kush, two lines that helped define the high-potency terpene profiles of contemporary cannabis. In its Regular Limited Edition format, this release preserves the raw breeding potential of the original lineage, offering vigorous plants and a wide phenotypic spectrum that is especially valuable for selection work and hybrid development.

In cultivation, Bruce Banner displays strong hybrid vigor with rapid vegetative growth, pronounced lateral branching and medium internodal spacing that allows good light penetration through the canopy. Plants respond well to structural training techniques such as topping, LST or SCROG, forming dense flower sites along well-supported branches. Indoors, flowering completes in 8–9 weeks with thick, resin-covered buds that combine weight with excellent trichome coverage. Outdoors, under full sun and sufficient root space, plants develop into large, structurally robust bushes capable of very high yields.

The aromatic profile reflects its Diesel–Kush heritage while adding a distinctive sweet fruit layer. Dominant fuel and diesel notes from OG Kush merge with sweet strawberry and berry tones inherited from Strawberry Diesel, supported by earthy Kush depth and a sharp gassy finish during late flowering. The effect begins with a strong cerebral lift that promotes euphoria, clarity and creative focus before gradually settling into a deep physical relaxation typical of Kush-based hybrids. With its exceptional resin production, potency and structural vigor, Bruce Banner Regular is well suited to growers seeking elite phenotypes and breeders developing terpene-rich next-generation hybrids.

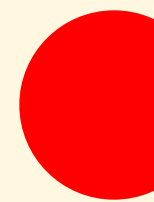
BRUCE BANNER

REGULAR LIMITED EDITION

STRAWBERRY DIESEL x OG KUSH

SUMMARY TABLE

Genetics:	Strawberry Diesel x OG Kush Regular · Limited Edition
Hybrid:	Balanced Hybrid (50 % Indica – 50 % Sativa)
THC:	25–28 %
CBD:	<1%
Flowering Time (Indoor):	8–9 weeks
Harvest Time (Outdoor):	Mid–Late October
Yield:	Indoor 500–650 g/m ² · Outdoor 900 g/plant
Height:	Indoor 100–140 cm · Outdoor 2–2.5 m
Effect:	Strong Cerebral Lift · Euphoric · Creative · Deep Physical Relaxation
Flavour:	Strawberry Gas · Sweet Diesel · Earthy Kush · Berry
Aroma:	Pungent Fuel · Sweet Berries · Kush Earthiness · Diesel
Resistance:	High to Pests · Medium to Mold
Terpene Profile:	Dominant in Limonene · Myrcene · Caryophyllene
Cultivation Difficulty:	Medium
Best For:	Growers and breeders seeking high-potency plants with strong resin production and expressive terpene profiles.



Candy Ritual Pellezino is a vibrant sativa-leaning hybrid developed from the cross Zkittlez x Tangie Power x Zkittlez x Kosher Tangie, combining the candy-forward terpene profile of Zkittlez with the bright citrus intensity of Tangie-derived genetics. This complex lineage results in a highly aromatic and vigorous plant that expresses the lively character typical of modern citrus hybrids. In its Regular Limited Edition format, the variety retains the full breeding potential of the parental lines, offering strong growth, resin production and valuable phenotypic diversity for growers and breeders seeking expressive terpene traits.

In cultivation, Candy Ritual Pellezino shows clear sativa influence with rapid vertical growth, elongated internodes and energetic lateral branching that promotes open canopy development. Indoors, early height management through topping, LST or SCROG helps control stretch while encouraging the formation of long, productive flowering sites. Flowering completes in 8–9 weeks, producing elongated buds with bright trichome coverage and good resin density. Outdoors, with ample sunlight and root space, plants develop into tall, productive structures capable of supporting substantial yields while maintaining strong structural balance.

The terpene profile is intensely citrus-driven and highly expressive. Notes of tangerine candy and mandarin zest combine with sweet orange tones and tropical fruit accents, supported by a soft Kush-like undertone inherited from the Kosher Tangie lineage. As flowering advances, the aroma becomes increasingly vivid and concentrated, filling the grow space with a distinctive citrus-candy fragrance. The effect begins with an energetic cerebral lift that promotes creativity, focus and a positive mood before gradually transitioning into a light body relaxation that keeps the experience balanced and functional. Thanks to its terpene richness, resin production and stable hybrid vigor, Candy Ritual Pellezino is well suited for terpene-focused cultivation, resin extraction and breeding projects centered on citrus-forward modern hybrids.

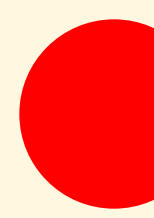
CANDY RITUAL – PELLEZINO

REGULAR LIMITED EDITION

ZKITTLEZ x TANGIE POWER x ZKITTLEZ x KOSHER TANGIE

SUMMARY TABLE

Genetics:	Zkittlez x Tangie Power x Zkittlez x Kosher Tangie
Hybrid:	Sativa Dominant (70 % Sativa – 30 % Indica)
THC:	22–26 %
CBD:	<1%
Flowering Time (Indoor):	8–9 weeks
Harvest Time (Outdoor):	Late October
Yield:	Indoor 500–650 g/m ² · Outdoor 800 g/plant
Height:	Indoor 110–160 cm · Outdoor 2–2.5 m
Effect:	Uplifting · Creative · Energetic · Gentle Body Relaxation
Flavour:	Tangerine Candy · Mandarin Zest · Tropical Fruit · Sweet Hash
Aroma:	Intense Citrus · Orange Candy · Sweet · Subtle Kush Base
Resistance:	Medium–High to Pests · Medium to Mold
Terpene Profile:	Dominant in Limonene · Myrcene · Caryophyllene
Cultivation Difficulty:	Medium
Best For:	Growers and breeders seeking terpene-rich citrus hybrids with strong resin production and lively daytime effects.



Do-Si-Dos is a modern indica-leaning hybrid derived from the celebrated cross Girl Scout Cookies x Face Off OG, a lineage that combines the dessert-style sweetness of Cookies genetics with the depth and potency of classic OG lines. In its Regular Limited Edition format, this release preserves the full genetic range of the original cross, offering vigorous plants and valuable phenotypic diversity for growers interested in selection as well as breeders developing terpene-rich hybrid lines.

In cultivation, Do-Si-Dos develops a compact, sturdy structure typical of indica-dominant plants, with thick stems, tight internodal spacing and broad dark green foliage that may express purple hues when exposed to cooler night temperatures. Vegetative growth is energetic but controlled, making the variety well suited to indoor cultivation. Plants respond particularly well to topping, LST and SCROG techniques, forming dense canopies with numerous flowering sites. Flowering completes in 8–9 weeks, producing compact, resin-laden buds with heavy trichome coverage that makes the variety especially attractive for resin extraction.

The aromatic profile reflects the distinctive “dessert” character of Cookies-derived genetics while retaining the fuel-laden backbone of OG Kush heritage. Sweet cookie dough and creamy notes blend with earthy lime, floral undertones and subtle mint-Kush nuances that intensify toward the final weeks of flowering. The effect begins with a warm cerebral lift that brings gentle euphoria and mental clarity before gradually transitioning into a deep, soothing body relaxation. Thanks to its resin production, terpene richness and stable structure, Do-Si-Dos Regular stands as a valuable choice for growers seeking premium phenotypes and breeders exploring the evolution of modern dessert hybrids.

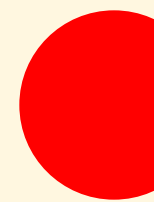
DO-SI-DOS

REGULAR LIMITED EDITION

GIRL SCOUT COOKIES x FACE OFF OG

SUMMARY TABLE

Genetics:	Girl Scout Cookies x Face Off OG
Hybrid:	Indica Dominant (70% Indica – 30% Sativa)
THC:	24–28%
CBD:	<1%
Flowering Time (Indoor):	8–9 weeks
Harvest Time (Outdoor):	Mid October
Yield:	Indoor 450–550 g/m ² · Outdoor 800 g/plant
Height:	Indoor 80–120 cm · Outdoor 1.8–2 m
Effect:	Warm Euphoria · Mental Clarity · Deep Physical Relaxation
Flavour:	Sweet Cookie Dough · Lime Earthy · Creamy · Mint Kush
Aroma:	Sugary Sweetness · Floral Notes · Earthy Lime · Fuel Kush
Resistance:	High to Pests · Medium to Mold
Terpene Profile:	Dominant in Limonene · Caryophyllene · Linalool
Cultivation Difficulty:	Medium
Best For:	Growers and breeders seeking resin-rich dessert genetics with strong terpene expression and reliable structure.



Grapefruitz is a sativa-dominant hybrid developed from the cross The Original Z x Grapefruit Bubblegum, combining the unmistakable candy-like terpene profile of the Z lineage with the bright citrus character of Grapefruit-based genetics. Grapefruit Bubblegum itself integrates Agent Orange Gum x Kosher Kush x Pakistani landrace, contributing structure, resin production and depth to the aromatic profile. In its Regular Limited Edition form, Grapefruitz preserves the breeding potential of this complex lineage, offering vigorous plants and a diverse phenotypic range suitable for both growers and selection-oriented breeding projects.

During cultivation, Grapefruitz clearly expresses its sativa influence through energetic vertical growth, strong lateral branching and elongated internodal spacing that improves light penetration and airflow within the canopy. Indoors, controlling vegetative time and applying structural training such as topping, LST or SCROG helps manage height while encouraging the development of long, stacked flower sites. Flowering typically completes in 7–8 weeks, producing elongated colas densely covered in bright trichomes. Outdoors, with ample sunlight and root space, plants can reach considerable size and produce generous harvests of resin-rich flowers.

The terpene profile is dominated by vibrant citrus and candy-like sweetness. Notes of pink grapefruit and sweet citrus peel merge with bubblegum undertones and tropical fruit accents, supported by subtle herbal and earthy nuances that provide depth to the aroma. As flowering progresses, these citrus-candy tones intensify and become increasingly pungent. The effect reflects its sativa dominance, beginning with an energetic cerebral lift that enhances mood, focus and creativity before gradually transitioning into a light physical relaxation that maintains clarity. Grapefruitz is particularly suited for daytime use and for breeders interested in citrus-forward Z-line genetics with expressive terpene profiles.

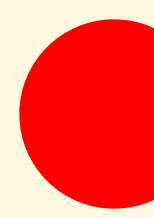
GRAPEFRUIT-Z

REGULAR LIMITED EDITION

THE ORIGINAL Z x GRAPEFRUIT BUBBLEGUM

SUMMARY TABLE

Genetics:	The Original Z x Grapefruit Bubblegum (Agent Orange Gum x Kosher Kush x Pakistani landrace)
Hybrid:	Sativa Dominant (70 % Sativa – 30 % Indica)
THC:	22–25 %
CBD:	<1%
Flowering Time (Indoor):	7–8 weeks
Harvest Time (Outdoor):	Early November
Yield:	Indoor 450–600 g/m ² · Outdoor 800 g/plant
Height:	Indoor 100–150 cm · Outdoor 2–2.5 m
Effect:	Energetic Cerebral Lift · Uplifting · Creative · Light Body Relaxation
Flavour:	Pink Grapefruit · Citrus Candy · Bubblegum · Tropical Fruit
Aroma:	Strong Citrus · Grapefruit Zest · Sweet Bubblegum · Herbal Earthy
Resistance:	Medium–High to Pests · Medium to Mold
Terpene Profile:	Dominant in Limonene · Myrcene · Caryophyllene
Cultivation Difficulty:	Easy–Medium
Best For:	Growers and breeders seeking citrus-forward Z-line genetics with uplifting effects and resin-rich flowers suitable for extraction.



Velvet Queen, also known as Jelly Bean, is a vibrant hybrid developed from the classic cross Orange Velvet x Space Queen, two lines known for their expressive terpene profiles and vigorous growth. In this Regular Limited Edition format, the variety preserves the full breeding potential of the original lineage, offering strong hybrid vigor, rich aromatic expression and a wide phenotypic range suitable for both dedicated growers and breeders seeking distinctive parental material.

In cultivation, Velvet Queen forms a balanced hybrid structure with rapid vegetative development, sturdy lateral branching and medium internodal spacing that allows good light penetration throughout the canopy. Indoors, plants respond well to topping, LST and SCROG techniques, quickly forming uniform canopies filled with compact flowering sites. Flowering typically completes in 8–9 weeks, producing dense, resin-coated buds with a bright trichome layer. Outdoors, under generous sunlight and sufficient root space, plants develop into robust bushes capable of supporting substantial yields while maintaining good structural stability.

The terpene profile combines bright citrus sweetness with deeper fruit notes inherited from its parental lines. Dominant aromas of orange candy and sweet citrus peel are complemented by tropical mango and pineapple tones, followed by darker berry accents and subtle earthy spice from the Space Queen lineage. During the final stages of flowering, some phenotypes may develop purple or wine-coloured pigments that contrast with the thick resin coverage. The effect begins with an uplifting cerebral phase that promotes euphoria, creativity and an elevated mood, gradually settling into a warm and relaxing body sensation that remains clear and manageable. Velvet Queen is well suited to daytime or early evening use and represents a valuable option for growers and breeders interested in colourful, terpene-rich hybrid genetics.

VELVET QUEEN

REGULAR LIMITED EDITION

ORANGE VELVET x SPACE QUEEN

SUMMARY TABLE

Genetics:	Orange Velvet x Space Queen
Hybrid:	Sativa Dominant (60 % Sativa – 40 % Indica)
THC:	20–24 %
CBD:	<1%
Flowering Time (Indoor):	8–9 weeks
Harvest Time (Outdoor):	Mid October
Yield:	Indoor 500–600 g/m ² · Outdoor 800 g/plant
Height:	Indoor 90–130 cm · Outdoor 1.8–2.2 m
Effect:	Euphoric · Creative · Uplifting · Warm Body Relaxation
Flavour:	Orange Candy · Tropical Mango · Pineapple · Dark Berry · Sweet Fuel
Aroma:	Citrus Sweetness · Tropical Fruit · Earthy Spice · Grape Fuel
Resistance:	High to Pests · Medium to Mold
Terpene Profile:	Dominant in Limonene · Myrcene · Caryophyllene
Cultivation Difficulty:	Easy–Medium
Best For:	Growers and breeders seeking colourful, resin-rich hybrids with expressive candy-fruit terpene profiles.



Inhale. Hold it. Share.
SMILE



WEDDING CAKE

REGULAR LIMITED EDITION

TRIANGLE KUSH × ANIMAL MINTS

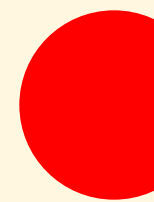
SUMMARY TABLE

Genetics:	Triangle Kush × Animal Mints
Hybrid:	Indica Dominant (60% Indica – 40% Sativa)
THC:	23–27%
CBD:	<1%
Flowering Time (Indoor):	8–9 weeks
Harvest Time (Outdoor):	Mid October
Yield:	Indoor 500–600 g/m ² · Outdoor 850 g/plant
Height:	Indoor 90–130 cm · Outdoor 1.8–2.2 m
Effect:	Euphoric · Uplifting · Deep, Long-Lasting Body Relaxation
Flavour:	Vanilla Cream · Sweet Dough · Kush · Minty Spice
Aroma:	Creamy · Sugary · Earthy Kush · Spicy Mint · Sour Sweet
Resistance:	High to Pests · Medium–High to Mold
Terpene Profile:	Dominant in Caryophyllene · Limonene · Linalool
Cultivation Difficulty:	Medium
Best For:	Growers and breeders seeking dessert-style genetics with high resin production, strong potency and complex aromatic expression.

Wedding Cake is a powerful indica-leaning hybrid developed from the celebrated cross Triangle Kush × Animal Mints, a lineage that combines the depth and potency of classic Kush genetics with the creamy sweetness typical of modern dessert-style strains. In this Regular Limited Edition format, the variety preserves the full breeding potential of the original cross, offering vigorous plants, strong resin production and a valuable phenotypic spectrum suited to both experienced growers and breeders seeking elite parental material.

In cultivation, Wedding Cake develops a robust hybrid structure with thick stems, medium internodal spacing and energetic vegetative growth. Indoors, plants respond very well to topping, LST and SCROG techniques, forming compact canopies capable of supporting dense clusters of heavy flowers. Flowering completes in 8–9 weeks, producing tight, resin-drenched buds coated in a thick, sugary layer of trichomes. This exceptional resin coverage makes the variety particularly suitable for solventless extractions and premium-quality hash. Outdoors, under strong sunlight and sufficient root space, plants develop into resilient bushes capable of carrying heavy branches without compromising structural stability.

The terpene profile is rich and layered, combining creamy dessert sweetness with deeper Kush complexity. Notes of vanilla cream and sweet dough blend with earthy Kush undertones, subtle mint and a gentle sour edge inherited from Triangle Kush. As flowering progresses, these aromas intensify and fill the grow space with a warm pastry-like sweetness and light spice. The effect begins with an uplifting cerebral phase that enhances mood and mental clarity before gradually settling into a deep, long-lasting body relaxation. Wedding Cake is particularly suited to evening use and remains a valuable genetic resource for breeders developing modern dessert hybrids with strong potency and complex terpene expression.



WHITE WIDOW

REGULAR LIMITED EDITION

BRAZILIAN SATIVA LANDRACE × SOUTH INDIAN INDICA

SUMMARY TABLE

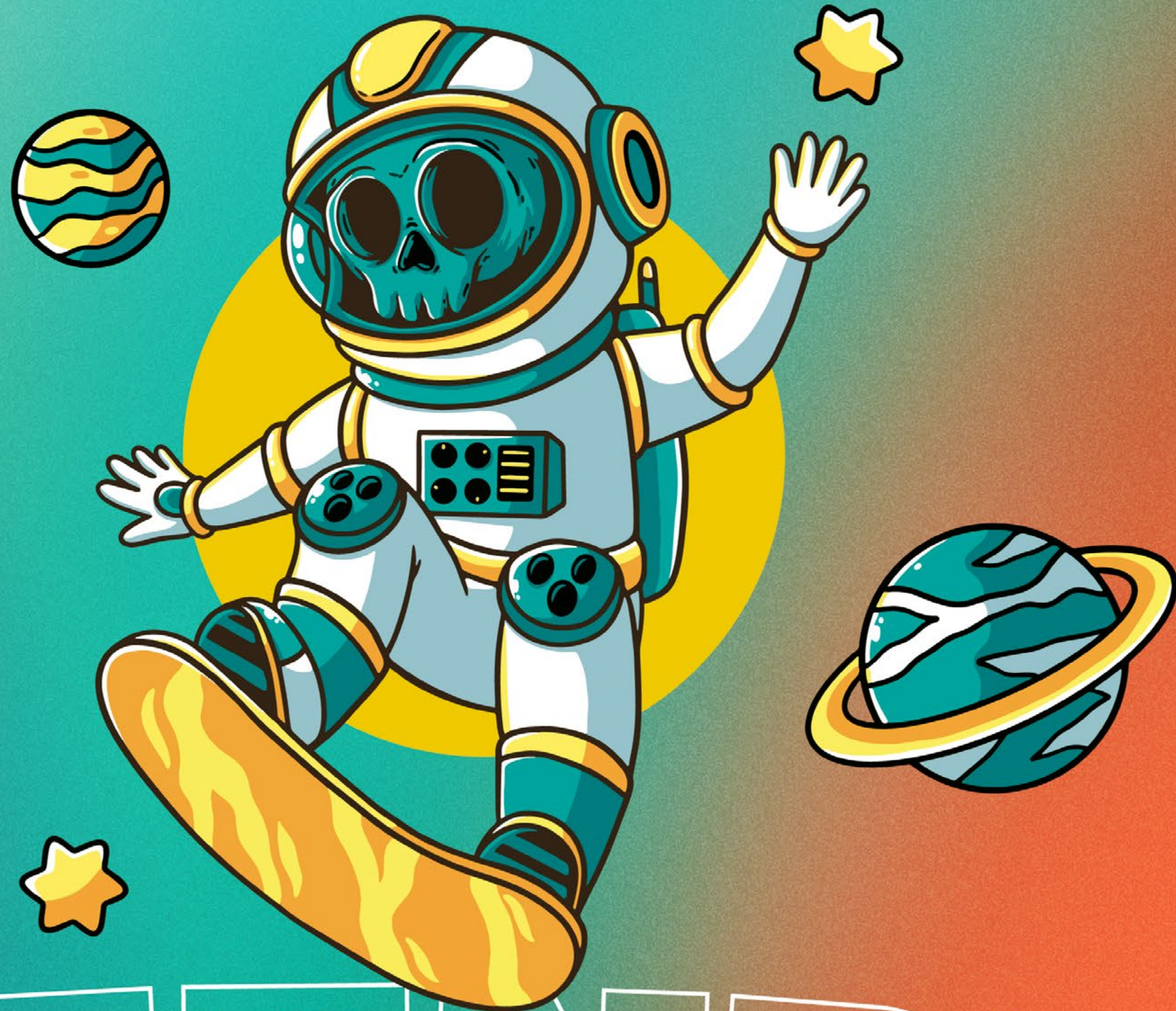
Genetics:	Brazilian Sativa Landrace × South Indian Indica
Hybrid:	Balanced Hybrid (60% Indica – 40% Sativa)
THC:	18–22%
CBD:	<1%
Flowering Time (Indoor):	8–9 weeks
Harvest Time (Outdoor):	Mid October
Yield:	Indoor 450–550 g/m ² · Outdoor 750 g/plant
Height:	Indoor 80–120 cm · Outdoor 1.7–2 m
Effect:	Uplifting · Creative · Cerebral · Relaxing Body Calm
Flavour:	Pine · Earthy Hash · Citrus · Spicy Herbal
Aroma:	Fresh · Pungent · Woody Earth · Resinous · Spicy
Resistance:	Very High to Pests · High to Cold and Moderate Humidity
Terpene Profile:	Dominant in Myrcene · Pinene · Caryophyllene
Cultivation Difficulty:	Easy
Best For:	Growers seeking reliable, resin-rich classic hybrids with balanced effects and traditional flavour.

White Widow is one of the most iconic hybrids in modern cannabis history, developed from the classic cross Brazilian Sativa Landrace × South Indian Indica. This lineage combines the energetic character of tropical sativa genetics with the resin density and structure of traditional indica lines. In its Regular Limited Edition format, White Widow preserves the authentic expression of the original line, offering stable growth, strong vigor and exceptional resin production that has defined the strain's reputation for decades.

In cultivation, White Widow displays a balanced hybrid structure with medium height, strong lateral branching and well-spaced internodes that promote efficient light penetration through the canopy. Plants grow vigorously during the vegetative phase and respond well to topping, LST and SCROG techniques, forming dense and productive indoor canopies. Flowering completes in 8–9 weeks, producing compact buds that rapidly become coated in a thick layer of bright white trichomes. This dense resin coverage gives the flowers their characteristic frosted appearance. Outdoors, the variety performs reliably, demonstrating strong resistance to pests and maintaining stability across variable temperatures and moderate humidity.

The aromatic profile is classic and instantly recognizable. Notes of fresh pine and earthy hash are complemented by spicy herbal nuances and a sharp citrus edge that recalls traditional European coffee shop varieties. As flowering progresses, the aroma becomes deeper and more resinous with a subtle sweetness. The effect begins with a clear cerebral lift that promotes energy, focus and creative thinking before gradually transitioning into a calm, relaxing physical sensation. This balance between mental stimulation and body relaxation makes White Widow a versatile variety suitable for different moments of the day and a reliable choice for growers and breeders seeking stable, resin-rich classic genetics.

COLLECTOR'S ITEM ONLY.
NOT SUITABLE FOR HUMAN CONSUMPTION
OR AGRICULTURAL USE.
SALE TO MINORS IS PROHIBITED.
DISTRIBUTED BY ESB98728231



OLD FASHIONED