



**GREENBUD**

— SELECTED SEEDS —



*Inhale. Hold it. Share.*



NICE CHAP. NO GENERAL

**SMILE**

NICE CHAP. NO GENERAL



# FEM LIMITED EDITION



PREMIUM

# CULTIVATING EXCELLENCE SINCE OUR BEGINNINGS

*Greenbud Seeds.* **Genetics you trust, cultivated with precision.**

**Founded in 2015, Greenbud Seeds is built upon a team of professionals and experienced growers with a long-standing background in the world of cannabis. From the very beginning, our work has followed a clear and consistent objective: to develop and offer high-quality feminized seeds through carefully controlled production and an unwavering commitment to excellence.**

All our production is carried out indoors in Europe, under strictly controlled conditions. Every stage of the process is monitored in detail—from light cycles and temperature to humidity and nutrition—ensuring the stability, vigor, and uniformity of each genetic line. Carefully selected mother plants are preserved and maintained to guarantee a solid, reliable, and consistent genetic foundation across all our batches.

Greenbud Seeds produces its seeds exclusively from elite cuttings, resulting in plants known for their strong performance, high productivity, and consistent behavior across different growing environments. Our catalogue brings together time-tested classic strains and exclusive new genetics developed through limited-edition crosses, aimed at growers seeking authentic flavours, potency, productivity, and distinctive character.

Each variety in our collection delivers resin-rich, aromatic, and highly productive

plants, with different indica and sativa dominances. Our genetics are available in Feminized, Autoflowering, Early Version, and Regular formats. Every line is selected according to strict quality criteria, following years of research focused on identifying specimens with exceptional hybrid vigor and refined organoleptic profiles.

Our seed selection process is meticulous and entirely manual. Germination tests consistently exceed a 95% success rate, ensuring that only the finest seeds reach our customers. We apply a highly reliable feminization process, guaranteeing an exceptionally high percentage of female plants when grown under proper conditions.

In 2025, to mark our 10th anniversary, we introduced a new packaging design developed to protect seeds from environmental fluctuations and to preserve their quality over time. In parallel, temperature- and humidity-controlled storage conditions ensure that each seed retains its full germination potential until the moment it reaches the grower.

Our commitment remains unchanged since day one: to provide exclusive, productive, and top-quality genetics, supported by rigorous work and the passion of a team that understands exactly what growers expect from a trusted seed bank.



NICE CHAP, NO GENERAL GREENBUD NICE CHAP, NO GENERAL  
— SELECTED SEEDS —

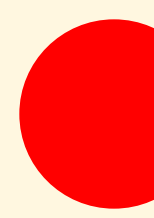


Inhale. Hold it. Share.  
SMILE

GREENBUDSEEDS PRODUCTS

2026

SHOP AT GREENBUDSEEDS.COM



# BLACK JILLY BEAN

FEMINIZED LIMITED EDITION

## ORANGE VELVET × SPACE QUEEN × BLACK IN BLACK (MALE)

### SUMMARY TABLE

Genetics:	Orange Velvet × Space Queen × Black in Black (Male) Feminized · Limited Edition
Hybrid:	Indica Dominant (60% Indica – 40% Sativa)
THC:	22%
CBD:	<1%
Flowering Time (Indoor):	8–9 weeks
Harvest Time (Outdoor):	Late September – Early October
Yield:	Indoor 450–550 g/m <sup>2</sup> · Outdoor 700 g/plant
Height:	Indoor 80–100 cm · Outdoor 1.8 m
Effect:	Uplifting · Creative · Euphoric · Relaxing · Balanced
Flavour:	Fruity Candy · Sweet Citrus · Dark Berries · Earthy Herbal
Aroma:	Sweet · Candy · Citrus · Berry · Spicy Earth
Resistance:	High to Pests and Mold
Terpene Profile:	Limonene · Myrcene · Caryophyllene
Cultivation Difficulty:	Easy–Medium
Best For:	Growers seeking a distinctive, balanced hybrid with layered sweetness and structural stability

Black Jelly Bean emerges from an uncommon yet captivating genetic combination that fuses the citrus sweetness of Orange Velvet, the fruity, resinous complexity of Space Queen, and the dark, penetrating power of our renowned Black in Black male. This exclusive limited-edition strain offers a vibrant expression of flavour and character, showcasing both visual elegance and aromatic intensity.

Its growth pattern is vigorous and balanced, developing strong lateral branches and medium internodal spacing, making it ideal for topping, LST, or SCROG setups. Indoors, flowering completes within 8–9 weeks, while outdoor plants are ready by late September to early October, delivering abundant yields of top-tier resin-coated flowers. Under optimal conditions, BLACK JELLY BEAN can exceed 500 g/m<sup>2</sup> indoors and reach up to 700 g per plant outdoors.

The strain's aromatic and flavour profile is a highlight: a burst of sweet fruit candy and caramelized citrus layered over deep notes of dark berries and a subtle earthy-herbal base, a clear legacy of Black in Black. The smoke is dense and sugary, with a complex evolution on the palate that keeps the senses engaged.

Its effect is a true hybrid experience — beginning with an uplifting, euphoric high that inspires creativity and good mood, followed by a gentle, soothing relaxation that never becomes heavy. Perfect for social occasions or quiet introspective moments, BLACK JELLY BEAN provides a balanced and refined sensory journey worthy of its limited-edition status.



*Inhale & Hold it. Share.*  
**SMILE**

# BLUE HULK

FEMINIZED LIMITED EDITION

## BLUEBERRY 99 × BRUCE BANNER (MALE)

### SUMMARY TABLE

Genetics:	Blueberry 99 × Bruce Banner (Male) Feminized · Limited Edition
Hybrid:	Balanced (55 % Indica – 45 % Sativa)
THC:	23 %
CBD:	<1%
Flowering Time (Indoor):	8–9 weeks
Harvest Time (Outdoor):	Early October
Yield:	Indoor 500–600 g/m <sup>2</sup> · Outdoor 700 g/plant
Height:	Indoor 80–110 cm · Outdoor 1.8 m
Effect:	Euphoric · Uplifting · Relaxing · Long-lasting · Balanced
Flavour:	Sweet Berries · Cream · Diesel · Earthy
Aroma:	Fruity · Creamy · Diesel · Sweet
Resistance:	High to Pests and Mold
Terpene Profile:	Myrcene · Limonene · Caryophyllene
Cultivation Difficulty:	Easy
Best For:	Growers seeking a flavour-rich, resin-heavy hybrid with strong and balanced effects

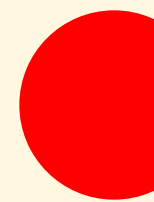
A commemorative Limited Edition developed from the union of Blueberry 99 × Bruce Banner (Male). This cross brings together the resinous sweetness and forest fruit character of Blueberry 99 with the vigor and elevated THC potential contributed by a carefully selected Bruce Banner male. Conceived to mark Greenbud Seeds' 10th anniversary, the objective was to create a hybrid that reflects both technical refinement and expressive terpene depth.

The plant develops a medium but solid structure, with strong lateral branching and an efficient flower-to-leaf ratio that facilitates light penetration and airflow. It responds well to SCROG and topping, maintaining structural stability throughout flowering. Indoor cycles complete in 8–9 weeks, while outdoor harvest is ready in early October. Production is generous and consistent, reaching 500–600 g/m<sup>2</sup> indoors and 700 g per plant outdoors. Buds are dense, resin-saturated and well formed, with a thick trichome layer suitable for extraction work.

The aromatic profile is layered and defined. Sweet forest berries form the primary note, supported by creamy undertones and a subtle diesel nuance that adds tension and complexity. The effect opens with a euphoric and uplifting cerebral phase, gradually settling into a deep, long-lasting physical relaxation without sedation. BLUE HULK offers a balanced yet potent hybrid expression, combining flavour richness, resin abundance and structural reliability.



*Inhale. Hold it. Share.*



# CANDY RITUAL

FEMINIZED LIMITED EDITION

**PELLEZINO [(ZKITTLEZ × TANGIE POWER) × (ZKITTLEZ × KOSHER TANGIE)] × BLACK IN BLACK (BLACK DOMINA × BLACK DOMINA)**

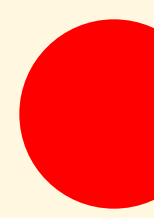
## SUMMARY TABLE

Genetics:	Pellezino [(Zkittlez × Tangie Power) × (Zkittlez × Kosher Tangie)] × Black in Black (Black Domina × Black Domina)
Hybrid:	Feminized · Limited Edition Balanced (55 % Indica – 45 % Sativa)
THC:	24 %
CBD:	<1%
Flowering Time (Indoor):	8–9 weeks
Harvest Time (Outdoor):	Early October
Yield:	Indoor 500–600 g/m <sup>2</sup> · Outdoor 700 g/plant
Height:	Indoor 80–100 cm · Outdoor 1.7 m
Effect:	Uplifting · Creative · Euphoric · Relaxing · Balanced
Flavour:	Sweet Fruit · Citrus Candy · Grape · Earthy
Aroma:	Fruity · Sweet · Tangy · Herbal · Earthy
Resistance:	High to Pests and Humidity
Terpene Profile:	Limonene · Myrcene · Linalool
Cultivation Difficulty:	Easy–Medium
Best For:	Growers seeking a flavour-driven, resin-rich hybrid with creative and relaxing balance

Developed as a commemorative Limited Edition marking a decade of genetic refinement and selection at Greenbud Seeds. It brings together the vibrant, candy-driven complexity of Pellezino [(Zkittlez × Tangie Power) × (Zkittlez × Kosher Tangie)] with the dark, resin-dense backbone of Black in Black (Black Domina × Black Domina). The objective behind this cross was to explore contrast: luminous fruit expression layered over the structural solidity and depth of a classic dark Indica lineage.

The plant forms a compact yet vigorous structure, with strong lateral branches and a controlled internodal distance that supports uniform canopy development. Flowering completes in 8–9 weeks indoors, with outdoor harvest ready in early October. Buds are thick, dense and heavily coated in resin, often displaying pronounced purple tones under optimal temperature differentials. The trichome coverage is abundant, making the variety particularly suitable for hash and concentrate production. Resistance to pests and humidity is high, ensuring reliable performance in both indoor and outdoor environments.

The aromatic profile is expansive and clearly defined. Sweet fruit and citrus candy dominate the opening, followed by ripe grape nuances and a restrained earthy base inherited from Black in Black. The effect unfolds in two phases: an uplifting and creative cerebral onset that stimulates clarity and mood, gradually transitioning into deep physical relaxation while maintaining mental brightness. CANDY RITUAL delivers a balanced yet expressive hybrid experience, shaped by deliberate selection and contrast-driven breeding.



# CRITICAL GORILLA

FEMINIZED LIMITED EDITION

## CRITICAL x GORILLA GLUE (MALE)

### SUMMARY TABLE

Genetics:	CRITICAL x Gorilla Glue (Male) Feminized · Limited Edition
Hybrid:	Indica Dominant (65 % Indica – 35 % Sativa)
THC:	22 %
CBD:	<1%
Flowering Time (Indoor):	7–8 weeks
Harvest Time (Outdoor):	Early October
Yield:	Indoor 450–550 g/m <sup>2</sup> · Outdoor 700 g/plant
Height:	Indoor 80–110 cm · Outdoor 1.8 m
Effect:	Uplifting · Creative · Euphoric Onset · Long-lasting Relaxing Body Effect
Flavour:	Skunky Candy · Diesel · Chocolate-Coffee · Earthy
Aroma:	Sweet · Candy · Skunk · Pungent Diesel · Woody
Resistance:	High to Pests and Mold
Terpene Profile:	Myrcene · Caryophyllene · Limonene
Cultivation Difficulty:	Easy–Medium
Best For:	Growers seeking a high-resin, productive hybrid with dual-phase effects

A Limited Edition hybrid developed from the cross of CRITICAL x Gorilla Glue (Male). The intention behind this combination was clear: to merge the fast-flowering, high-yielding reliability of Critical with the resin density and structural power of a selected Gorilla Glue male. The result is a robust and expressive hybrid that integrates productivity with terpene intensity.

The plant grows vigorously while maintaining a manageable medium height. Strong lateral branching, balanced internodal spacing and consistent bud stacking make it well suited for indoor SCROG systems as well as outdoor training techniques. Flowering indoors completes in 7–8 weeks, offering an efficient production cycle, while outdoor harvest is ready in early October. Yields reach 450–550 g/m<sup>2</sup> indoors and up to 700 g per plant outdoors under well-managed conditions. Buds are compact and heavily resin-coated, with excellent suitability for extraction and hash production. Resistance to pests and mold is high, supporting stable cultivation across environments.

The sensory profile combines distinct parental traits. Crisp skunky sweetness and candy notes from Critical merge with pungent diesel and subtle chocolate-coffee undertones inherited from Gorilla Glue. The effect unfolds progressively: an uplifting and creative cerebral onset transitions into a deep, long-lasting physical relaxation while maintaining mental clarity. CRITICAL GORILLA delivers a dual-phase hybrid experience shaped by yield, resin output and balanced potency.



# MIDNIGHT SUNDAE

FEMINIZED LIMITED EDITION

## SOUR BANANA SHERBET × BLACK IN BLACK (MALE)

### SUMMARY TABLE

Genetics:	Sour Banana Sherbet × Black in Black (Male) Feminized · Limited Edition
Hybrid:	Balanced (50 % Indica – 50 % Sativa)
THC:	23 %
CBD:	<1%
Flowering Time (Indoor):	8–9 weeks
Harvest Time (Outdoor):	Late September – Early October
Yield:	Indoor 450–550 g/m <sup>2</sup> · Outdoor 700 g/plant
Height:	Indoor 80–110 cm · Outdoor 1.8 m
Effect:	Uplifting · Creative · Euphoric Onset · Smooth Relaxing Body Effect
Flavour:	Sweet Banana · Tropical Fruit · Diesel · Dark Berries · Earthy
Aroma:	Fruity Candy · Banana · Fuel · Chocolate · Forest Earth
Resistance:	High to Pests and Mold
Terpene Profile:	Limonene · Caryophyllene · Myrcene
Cultivation Difficulty:	Easy–Medium
Best For:	Growers seeking a flavour-rich, resinous hybrid with balanced dual-phase effects

A Limited Edition hybrid developed from the cross of Sour Banana Sherbet × Black in Black (Male). This pairing combines the fruity sweetness and sweet-diesel character of Sour Banana Sherbet with the resin density, compact structure and dark aesthetic of Black in Black. The breeding objective was to integrate aromatic brightness with a deeper, Indica-rooted backbone, achieving both sensory richness and structural consistency.

From early vegetative stages the plant displays robust vigor, forming a compact to medium structure with thick lateral branches and uniform bud set. Internodal spacing remains controlled, supporting dense flower formation without excessive leaf mass. Indoor flowering completes in 8–9 weeks, while outdoor harvest is ready between late September and early October. Yields reach 450–550 g/m<sup>2</sup> indoors and 700 g per plant outdoors under stable conditions. Buds are compact, heavily resin-coated and well suited for extraction, with high resistance to pests and mold.

The organoleptic profile unfolds with clarity and contrast. On inhalation, sweet banana and tropical fruit tones emerge, supported by a sharp diesel nuance. The exhale reveals darker berry and subtle chocolate undertones resting on an earthy, forest-floor spice inherited from Black in Black. The effect opens with a lifted, creative and clear-headed euphoria, gradually transitioning into a relaxed body state that remains controlled without heavy sedation. MIDNIGHT SUNDAE offers a balanced hybrid progression shaped by flavour intensity and resin production.

Inhale. Hold it. Share.

SMILE



# MIMOSA PIE

FEMINIZED LIMITED EDITION

**MIMOSA (PURPLE PUNCH × CLEMENTINE) × LEMON PIE (SKUNK #1 × AMNESIA HAZE × SECRET)**

## SUMMARY TABLE

Genetics:	Mimosa (Purple Punch × Clementine) × Lemon Pie (Skunk #1 × Amnesia Haze × Secret)
Hybrid:	Feminized · Limited Edition Balanced (55 % Sativa – 45 % Indica)
THC:	22 %
CBD:	<1%
Flowering Time (Indoor):	8–9 weeks
Harvest Time (Outdoor):	Early October
Yield:	Indoor 500–600 g/m <sup>2</sup> · Outdoor 700 g/plant
Height:	Indoor 80–110 cm · Outdoor 1.8 m
Effect:	Uplifting · Creative · Energetic · Euphoric · Relaxing Finish
Flavour:	Tangerine · Sweet Lemon Cream · Tropical Fruit · Herbal Skunk
Aroma:	Citrus · Sweet · Tropical · Creamy · Fresh
Resistance:	High to Pests and Mold
Terpene Profile:	Limonene · Terpinolene · Myrcene
Cultivation Difficulty:	Easy
Best For:	Growers seeking a citrus-forward, energizing hybrid with balanced potency

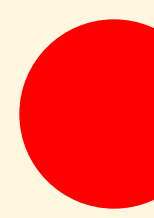
Developed to mark the 10th anniversary of Greenbud Seeds, combining the vibrant citrus intensity of Mimosa (Purple Punch × Clementine) with the creamy lemon character of Lemon Pie (Skunk #1 × Amnesia Haze × Secret). This Limited Edition hybrid was designed to express aromatic brightness and structural balance, bringing together tropical sharpness and refined sweetness within a stable genetic frame.

The plant grows with a balanced, medium-sized structure and strong lateral branching, responding efficiently to topping and LST techniques. Internodal spacing supports uniform bud stacking and good airflow. Indoor flowering completes in 8–9 weeks, while outdoor harvest is ready in early October. Yields reach 500–600 g/m<sup>2</sup> indoors and 700 g per plant outdoors under well-managed conditions. The buds are dense and resin-rich, often displaying vibrant orange pistils over a thick layer of trichomes suitable for both flower production and extractions. Resistance to pests and mold is high.

The terpene expression is lively and defined. Bright tangerine and sweet lemon cream dominate the profile, supported by tropical fruit nuances and a subtle herbal-skunky base. The effect opens with an uplifting and creative cerebral stimulation, promoting clarity and energy, before settling into a gentle and controlled body relaxation. MIMOSA PIE offers a modern, balanced hybrid progression shaped by citrus-driven flavour and functional potency.



*Inhale. Hold it. Share.*  
**SMILE**



# ROYAL MARKER

FEMINIZED LIMITED EDITION

## PERMANENT MARKER × APPLE FRITTER

### SUMMARY TABLE

Genetics:	Permanent Marker × Apple Fritter Feminized · Limited Edition
Hybrid:	Indica Dominant (65 % Indica – 35 % Sativa)
THC:	23 %
CBD:	<1%
Flowering Time (Indoor):	8–9 weeks
Harvest Time (Outdoor):	Late September – Early October
Yield:	Indoor 450–550 g/m <sup>2</sup> · Outdoor 650–700 g/plant
Height:	Indoor 80–110 cm · Outdoor 1.8 m
Effect:	Creative · Euphoric Onset · Relaxing Body Effect · Balanced Potency
Flavour:	Apple-Pie Sweet · Vanilla Cream · Candy Fruit · Gas · Diesel
Aroma:	Sweet Candy · Apple · Gas · Skunk · Earthy-Spice
Resistance:	High to Pests and Mold
Terpene Profile:	Limonene · Caryophyllene · Myrcene
Cultivation Difficulty:	Easy–Medium
Best For:	Growers seeking a resin-rich, flavour-intense hybrid with strong structural performance

A distinctive Limited Edition hybrid created from the cross of Permanent Marker × Apple Fritter. This combination integrates the pungent, gas-forward character of Permanent Marker with the creamy dessert-style sweetness of Apple Fritter, aiming to unite aromatic intensity with structural consistency and resin output.

From early vegetative growth the plant displays strong vigor, developing firm lateral branches and a compact to medium frame. Internodal spacing remains moderate, supporting dense bud stacking without excessive stretch. It responds well to SCROG, topping and outdoor training techniques. Indoor flowering completes in 8–9 weeks, while outdoor harvest falls between late September and early October under favourable conditions. Yields reach 450–550 g/m<sup>2</sup> indoors and 650–700 g per plant outdoors. Buds are compact, resin-saturated and visually striking, with high trichome density suitable for premium flower production and extraction work. Resistance to pests and mold is high.

The aromatic profile reflects both parental lines. Skunky ink-and-gas undertones form the structural base, layered with sweet apple pastry, vanilla cream and subtle candy fruit nuances. A diesel backbone and restrained earthy-spice finish add depth and persistence. The effect begins with a creative and euphoric cerebral lift, gradually transitioning into a deep and satisfying physical relaxation that remains controlled rather than heavily sedative. ROYAL MARKER delivers a potent, flavour-driven hybrid experience shaped by resin abundance and balanced intensity.



*Inhale. Hold it. Share.*

**SMILE**

# SECRET ORCHARD

FEMINIZED LIMITED EDITION

## APPLE FRITTER (SOUR APPLE × ANIMAL COOKIES) × SECRET

### SUMMARY TABLE

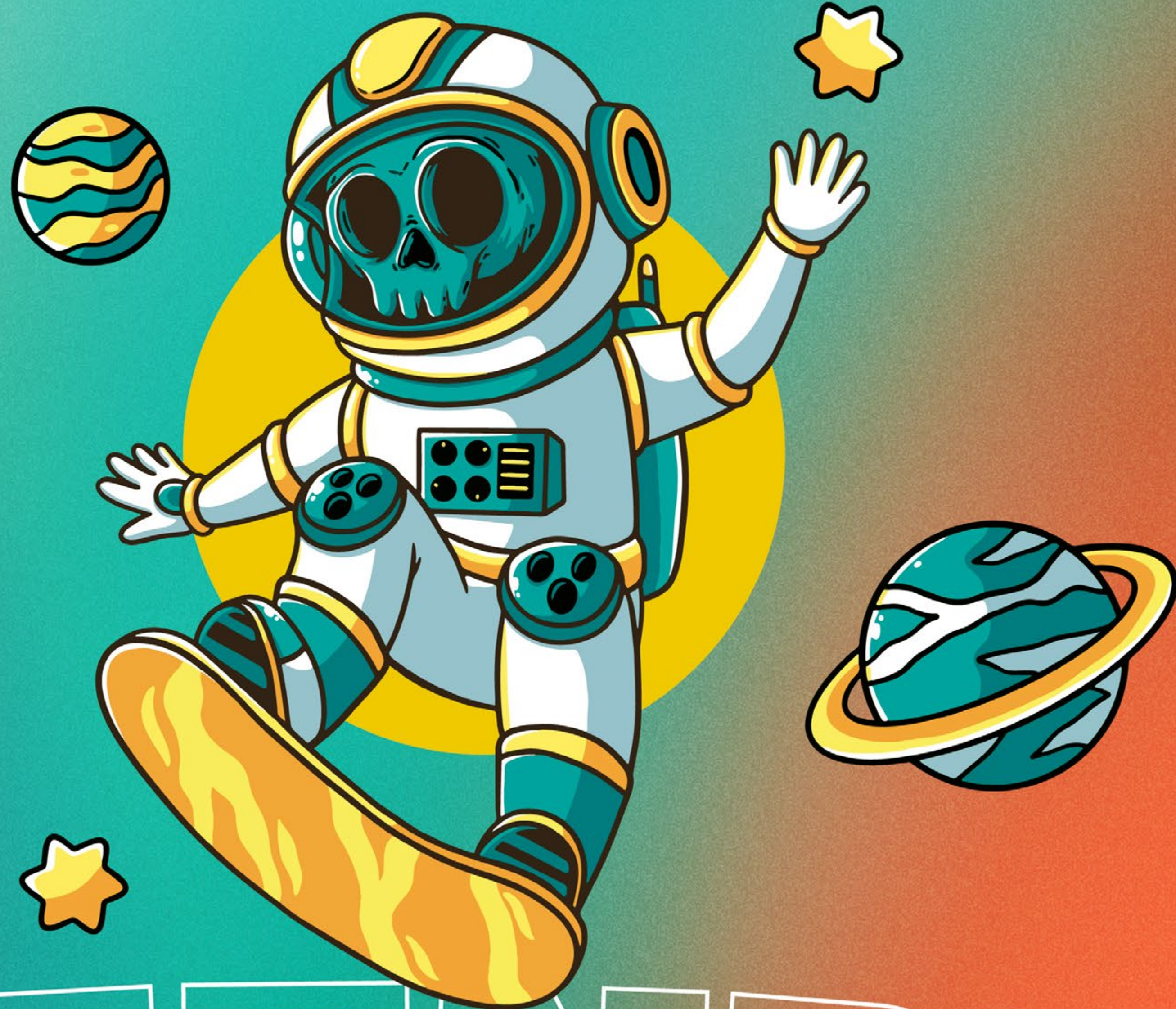
Genetics:	Apple Fritter (Sour Apple × Animal Cookies) × Secret Feminized · Limited Edition
Hybrid:	Indica Dominant (65 % Indica – 35 % Sativa)
THC:	22 %
CBD:	<1%
Flowering Time (Indoor):	8–9 weeks
Harvest Time (Outdoor):	Late September – Early October
Yield:	Indoor 500–600 g/m <sup>2</sup> · Outdoor 700 g/plant
Height:	Indoor 80–110 cm · Outdoor 1.8 m
Effect:	Euphoric · Relaxing · Balanced · Uplifting · Calming
Flavour:	Baked Apple · Sweet Cream · Vanilla · Earthy-Gas
Aroma:	Fruity · Pastry · Sweet · Spicy · Earthy
Resistance:	High to Pests and Mold
Terpene Profile:	Limonene · Myrcene · Caryophyllene
Cultivation Difficulty:	Easy
Best For:	Growers seeking a resin-rich dessert-style hybrid with balanced, long-lasting effects

A Limited Edition hybrid developed from Apple Fritter (Sour Apple × Animal Cookies) × Secret. This combination was selected to preserve the dessert-style sweetness and creamy fruit character of Apple Fritter while reinforcing structural stability, resin density and overall cultivation consistency. The result is a mostly Indica-leaning hybrid with balanced expression and reliable performance.

The plant grows compact yet vigorous, forming strong lateral branches and maintaining a favourable flower-to-leaf ratio suited for indoor and outdoor cultivation. Internodal spacing remains controlled, supporting dense bud stacking and efficient light penetration. Indoor flowering completes in 8–9 weeks, while outdoor harvest occurs between late September and early October. Yields reach 500–600 g/m<sup>2</sup> indoors and up to 700 g per plant outdoors under stable conditions. Buds are thick, resin-saturated and well suited for both flower production and extraction. Resistance to pests and mold is high.

The flavour profile is structured and indulgent. Notes of baked apple and sweet cream lead the experience, supported by vanilla pastry nuances and a restrained earthy-gas undertone that adds depth. The effect begins with a gentle cerebral euphoria that enhances mood and clarity, gradually evolving into a soothing body relaxation without excessive sedation. SECRET ORCHARD delivers a balanced hybrid progression rooted in dessert-style aromatics and Indica solidity.

COLLECTOR'S ITEM ONLY.  
NOT SUITABLE FOR HUMAN CONSUMPTION  
OR AGRICULTURAL USE.  
SALE TO MINORS IS PROHIBITED.  
DISTRIBUTED BY ESB98728231



OLD FASHIONED