



**GREENBUD**

— SELECTED SEEDS —

*Inhale. Hold it. Share.*

**SMILE**

NICE CHAP. NO GENERAL

NICE CHAP. NO GENERAL



# EARLY VERSION LIMITED EDITION



PREMIUM

# CULTIVATING EXCELLENCE SINCE OUR BEGINNINGS

*Greenbud Seeds.* **Genetics you trust, cultivated with precision.**

**Founded in 2015, Greenbud Seeds is built upon a team of professionals and experienced growers with a long-standing background in the world of cannabis. From the very beginning, our work has followed a clear and consistent objective: to develop and offer high-quality feminized seeds through carefully controlled production and an unwavering commitment to excellence.**

All our production is carried out indoors in Europe, under strictly controlled conditions. Every stage of the process is monitored in detail—from light cycles and temperature to humidity and nutrition—ensuring the stability, vigor, and uniformity of each genetic line. Carefully selected mother plants are preserved and maintained to guarantee a solid, reliable, and consistent genetic foundation across all our batches.

Greenbud Seeds produces its seeds exclusively from elite cuttings, resulting in plants known for their strong performance, high productivity, and consistent behavior across different growing environments. Our catalogue brings together time-tested classic strains and exclusive new genetics developed through limited-edition crosses, aimed at growers seeking authentic flavours, potency, productivity, and distinctive character.

Each variety in our collection delivers resin-rich, aromatic, and highly productive

plants, with different indica and sativa dominances. Our genetics are available in Feminized, Autoflowering, Early Version, and Regular formats. Every line is selected according to strict quality criteria, following years of research focused on identifying specimens with exceptional hybrid vigor and refined organoleptic profiles.

Our seed selection process is meticulous and entirely manual. Germination tests consistently exceed a 95% success rate, ensuring that only the finest seeds reach our customers. We apply a highly reliable feminization process, guaranteeing an exceptionally high percentage of female plants when grown under proper conditions.

In 2025, to mark our 10th anniversary, we introduced a new packaging design developed to protect seeds from environmental fluctuations and to preserve their quality over time. In parallel, temperature- and humidity-controlled storage conditions ensure that each seed retains its full germination potential until the moment it reaches the grower.

Our commitment remains unchanged since day one: to provide exclusive, productive, and top-quality genetics, supported by rigorous work and the passion of a team that understands exactly what growers expect from a trusted seed bank.



GREENBUD  
SELECTED SEEDS

Inhale. Hold it. Share.

SMILE

GREENBUDSEEDS PRODUCTS

2026

SHOP AT GREENBUDSEEDS.COM

# BLACK GELATO

EARLY VERSION LIMITED EDITION

## GELATO #41 × SHERBET × BLACK IN BLACK (X SECRET HYBRID)

### SUMMARY TABLE

|                          |   |
|--------------------------|---|
| Genetics:                | Gelato #41 × Sherbet × Black in Black (x Secret Hybrid)<br>Early Version – Limited Edition    |
| Hybrid:                  | Hybrid: Indica Dominant<br>(60% Indica · 40% Sativa)  |
| THC:                     | 22–24%  |
| CBD:                     | Low (<1%)   |
| Flowering Time (Indoor): | 45–50 days  |
| Harvest Time (Outdoor):  | Late September  |
| Yield:                   | YIndoor 550–650 g/m <sup>2</sup> · Outdoor 800 g/plant  |
| Height:                  | Indoor 80–120 cm ·<br>Outdoor 150–200 cm  |
| Effect:                  | Euphoric ·<br>Relaxing · Long-lasting · Creative · Calming                                    |
| Flavour:                 | Sweet cream ·<br>Fruit sorbet · Earthy · Spicy  |
| Aroma:                   | Dessert-like · Creamy · Fruity · Earth · Spice  |
| Resistance:              | High resistance to pests and mold   |
| Terpene Profile:         | Limonene · Caryophyllene · Myrcene  |
| Cultivation Difficulty:  | Medium  |
| Best For:                | Extract artists and flavour connoisseurs<br>seeking rich dessert terpenes with fast flowering |

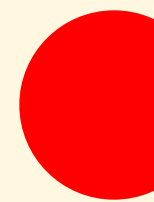
Black Gelato Early Version by Greenbud Seeds is an Indica-dominant Early Version hybrid that merges the dessert-like character of the Gelato #41 × Sherbet lineage with the darker, resin-rich personality of Black in Black, reinforced by a selected Secret Hybrid. The breeding objective behind this cross was to preserve the unmistakable creamy terpene signature of modern Californian genetics while offering a significantly earlier harvest window.

During vegetative growth, the plant develops a compact and well-structured architecture with strong lateral branching and relatively short internodal spacing. Its balanced vigor allows it to respond well to training techniques such as topping, LST, or SCROG, forming an even canopy with multiple productive flowering sites. The structure remains stable across different cultivation environments, and the variety shows solid natural resistance to pests and humidity-related issues.

Flowering is notably fast, completing in 45–50 days indoors. Outdoors, plants typically reach maturity by late September, providing growers with an early harvest while maintaining the terpene richness associated with Gelato-derived genetics. The flowers are dense and resin-saturated, forming compact buds with a thick trichome layer that gives them a frosted appearance. Aromatically, Black Gelato Early Version expresses a refined dessert profile combining sweet cream and fruit sorbet notes with subtle earthy and spicy undertones inherited from its darker lineage. The effect begins with a clear euphoric uplift that gradually transitions into a deep, soothing body relaxation, delivering a balanced and long-lasting experience.



*Inhale. Hold it. Share.*  
**SMILE**



# CHOCO CANDY

EARLY VERSION LIMITED EDITION

## CHOCOLOPE × AFGHAN KUSH (X SECRET HYBRID)

### SUMMARY TABLE

|                          |   |
|--------------------------|---|
| Genetics:                | Chocolope × Afghan Kush (x Secret Hybrid)<br>Early Version – Limited Edition              |
| Hybrid:                  | Sativa Dominant<br>(65% Sativa · 35% Indica)  |
| THC:                     | 20–22%  |
| CBD:                     | Low (<1%)   |
| Flowering Time (Indoor): | 45 days   |
| Harvest Time (Outdoor):  | Late September  |
| Yield:                   | Indoor 550–600 g/m <sup>2</sup> · Outdoor 800 g/plant                                     |
| Height:                  | Indoor 90–130 cm ·<br>Outdoor 160–200 cm  |
| Effect:                  | Euphoric · Creative ·<br>Relaxing · Balanced  |
| Flavour:                 | Dark chocolate · Earthy ·<br>Woody · Menthol · Hash                                       |
| Aroma:                   | Kush · Cocoa · Earth · Wood · Hashish · Menthol   |
| Resistance:              | High resistance to pests and humidity   |
| Terpene Profile:         | Myrcene · Caryophyllene · Limonene  |
| Cultivation Difficulty:  | Easy–Medium   |
| Best For:                | Growers seeking a fast-flowering Sativa profile<br>with deep cocoa and classic hash notes |

A fast-flowering Sativa-dominant hybrid created from the distinguished cross of Chocolope and Afghan Kush, reinforced with a selected Secret Hybrid. This combination brings together the bright, cerebral character of classic Sativa genetics with the compact structure and resin production typical of Afghan-derived lines, resulting in a well-balanced plant that performs reliably across different cultivation environments.

During vegetative growth, Choco Candy Early Version develops a vigorous, conical structure with strong lateral branching and medium internodal spacing. The plant shows steady vertical growth while maintaining enough structural strength to support dense flowering sites. Indoors it responds well to canopy management techniques such as SCROG or light topping, while outdoors it expresses its natural architecture with multiple productive branches. Its overall resilience and natural tolerance to humidity and pests make it suitable for a wide range of growing conditions.

Flowering completes in 45 days indoors, offering growers the possibility of harvesting a Sativa-leaning profile within a notably reduced cycle. Outdoor crops are generally ready by late September. The buds are compact and resinous, with a thick coating of aromatic trichomes. The aromatic profile is deep and distinctive, blending Kush earthiness with pronounced cocoa and dark chocolate notes supported by woody and slightly mentholated undertones. The flavour remains dry and intense, reminiscent of unsweetened cocoa and traditional Afghan hash. The effect begins with an uplifting and creative cerebral stimulation that gradually settles into a calm, comfortable body relaxation, delivering a balanced experience suitable for both active moments and evening unwinding.



# PURPLE BLACK GOLD

EARLY VERSION LIMITED EDITION

## PURPLE KUSH × BLACK GOLD (KOSHER TANGIE × BLACK IN BLACK)

### SUMMARY TABLE

|                          |   |
|--------------------------|---|
| Genetics:                | Purple Kush × Black Gold<br>Early Version – Limited Edition                                       |
| Hybrid:                  | (Kosher Tangie × Black in Black)<br>Indica Dominant (80% Indica · 20% Sativa)                     |
| THC:                     | 21–23%  |
| CBD:                     | Low (<1%)   |
| Flowering Time (Indoor): | 45–50 days  |
| Harvest Time (Outdoor):  | Late September  |
| Yield:                   | Indoor 550–650 g/m <sup>2</sup> · Outdoor 850 g/plant   |
| Height:                  | Indoor 80–120 cm ·<br>Outdoor 150–180 cm  |
| Effect:                  | Relaxing · Calming ·<br>Euphoric · Long-lasting   |
| Flavour:                 | Sweet · Fruity · Floral ·<br>Grape · Citrus · Hash  |
| Aroma:                   | Earthy · Spicy · Citrus · Incense · Kush  |
| Resistance:              | High resistance to pests and humidity   |
| Terpene Profile:         | Myrcene · Limonene · Caryophyllene  |
| Cultivation Difficulty:  | Easy–Medium   |
| Best For:                | Growers seeking colourful, resin-rich Indicas<br>with fast flowering and layered terpene profiles |

A fast-flowering Indica-dominant hybrid created from the union of Purple Kush and Black Gold (a cross of Kosher Tangie × Black in Black). This genetic combination was developed to preserve the depth and structure of classic Kush varieties while introducing the refined aromatic complexity of modern resin-rich lines in an early-harvest format.

The plant develops a compact and sturdy architecture, with thick stems, short internodes and broad, dark green foliage typical of strong Indica genetics. During flowering, cooler conditions may encourage the appearance of purple and violet tones across the leaves and calyxes, adding a distinctive ornamental character to the plant. Its balanced growth and structural stability make it suitable for indoor cultivation techniques such as topping or SCROG, while outdoors it maintains a manageable height and reliable productivity. The variety also demonstrates strong natural resistance to pests and humidity.

Flowering is completed in 45–50 days indoors, allowing growers to obtain a high-quality Indica harvest within a reduced cycle. Outdoor plants typically reach maturity by late September. The flowers form dense, resin-coated buds with a compact structure and abundant trichome coverage. Aromatically, Purple Black Gold Early Version expresses a layered profile where earthy and spicy Kush notes intertwine with fruity and slightly citrus accents, accompanied by subtle hints of incense. The flavour follows a similar path, combining sweet floral nuances with touches of grape, orange peel and classic Afghan hash. The effect unfolds gradually, beginning with a calm cerebral easing that settles into a deep, soothing body relaxation that persists for hours.

Inhale. Hold it. Share.

SMILE



*Inhale. Hold it. Share.*  
**SMILE**

# PURPLE TROPIC

EARLY VERSION LIMITED EDITION

## PURPLE KUSH × TROPICANNA COOKIES

### SUMMARY TABLE

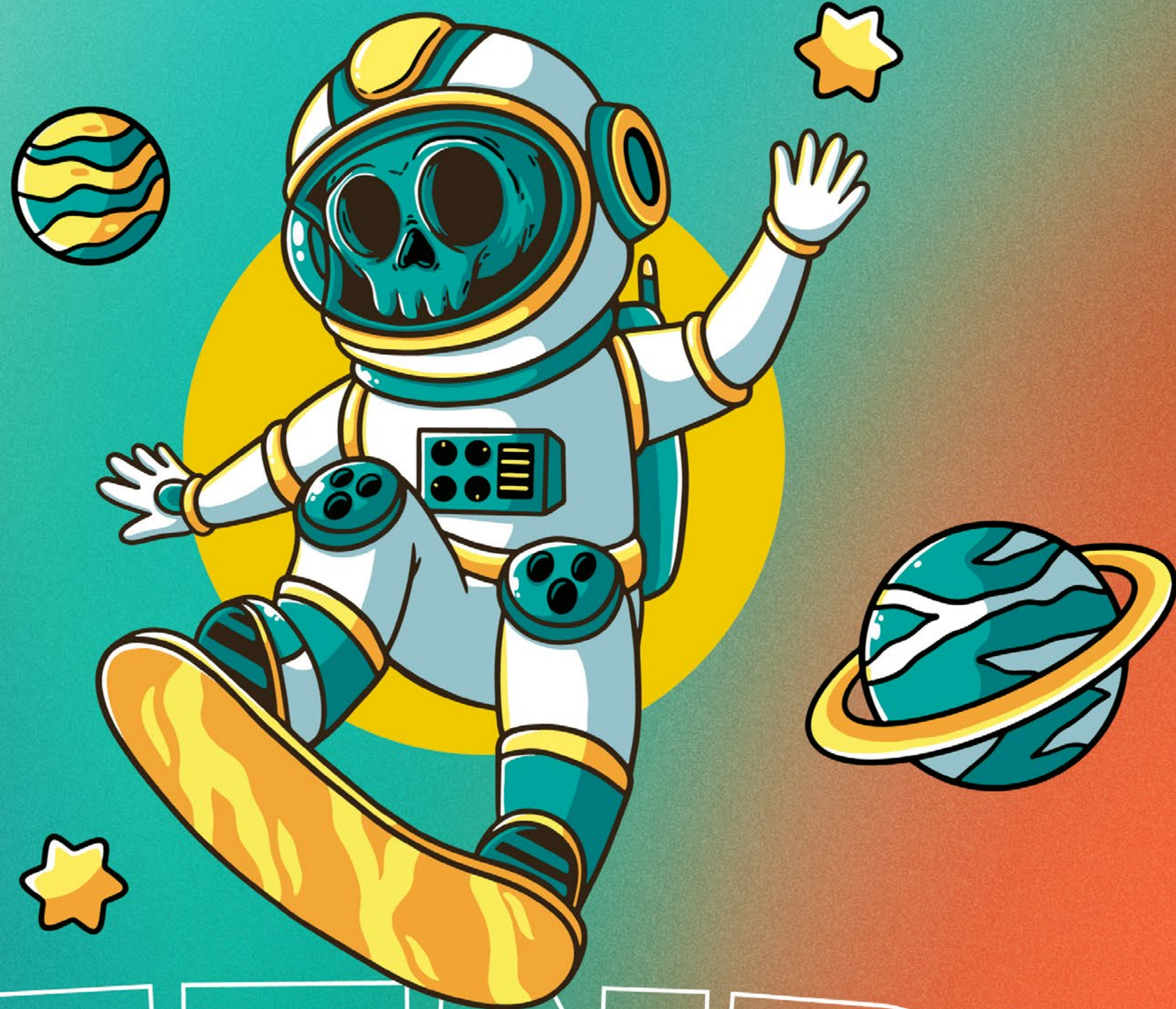
|                          |  |
|--------------------------|--|
| Genetics:                | Purple Kush × Tropicanna Cookies<br>Early Version – Limited Edition                      |
| Hybrid:                  | Balanced<br>(55% Indica · 45% Sativa)  |
| THC:                     | 20–23%   |
| CBD:                     | Low (<1%)  |
| Flowering Time (Indoor): | 45–50 days   |
| Harvest Time (Outdoor):  | Late September   |
| Yield:                   | Indoor 550–650 g/m <sup>2</sup> · Outdoor 800 g/plant                                    |
| Height:                  | Indoor 90–130 cm ·<br>Outdoor 150–200 cm   |
| Effect:                  | Uplifting · Creative ·<br>Relaxing · Long-lasting  |
| Flavour:                 | Sweet tropical fruit · Citrus ·<br>Cookie dough · Grape · Spicy                          |
| Aroma:                   | Fruity · Floral · Earthy · Citrus · Sweet  |
| Resistance:              | High resistance to humidity and pests  |
| Terpene Profile:         | Limonene · Myrcene · Caryophyllene   |
| Cultivation Difficulty:  | Medium   |
| Best For:                | Growers seeking colourful hybrids with<br>tropical terpene expression and fast flowering |

A fast-flowering hybrid created from the meeting of Purple Kush and Tropicanna Cookies, combining the colourful depth of classic Kush genetics with the vibrant terpene expression associated with modern citrus-dominant lines. The breeding objective behind this cross was to capture the exotic aromatic profile of Tropicanna Cookies while preserving the structural stability and resin production of Purple Kush in an early-harvest format.

During vegetative growth, the plant forms a compact and well-balanced structure with strong lateral branching and broad, dark foliage typical of Indica-influenced hybrids. As flowering progresses, cooler conditions can encourage the development of purple and violet tones across the leaves and flowers, giving the plant a striking ornamental character. Purple Tropic Early Version adapts easily to indoor cultivation and responds well to canopy management techniques such as SCROG or LST, while outdoor plants maintain stable growth and reliable productivity. The variety also demonstrates strong natural resistance to humidity and common pests.

Flowering is completed in 45–50 days indoors, allowing growers to harvest terpene-rich flowers within a notably short cycle. Outdoor crops generally reach maturity by late September. The buds develop dense, resin-coated formations with abundant trichome coverage. Aromatically, the profile blends sweet tropical fruit and bright citrus notes with subtle earthy and floral undertones inherited from its Kush lineage. The flavour remains layered and expressive, combining creamy citrus nuances with hints of grape and soft spice. The effect begins with an uplifting and creative mental stimulation before gradually settling into a relaxed, body-soothing calm that remains balanced and long-lasting.

COLLECTOR'S ITEM ONLY.  
NOT SUITABLE FOR HUMAN CONSUMPTION  
OR AGRICULTURAL USE.  
SALE TO MINORS IS PROHIBITED.  
DISTRIBUTED BY ESB98728231



OLD FASHIONED