



WE TRUST IN MED

GREENBUD

— SELECTED SEEDS —



Inhale. Hold it. Share.



NICE CHAP. NO GENERAL

SMILE

NICE CHAP. NO GENERAL



AUTO LIMITED EDITION



PREMIUM

CULTIVATING EXCELLENCE SINCE OUR BEGINNINGS

Greenbud Seeds. **Genetics you trust, cultivated with precision.**

Founded in 2015, Greenbud Seeds is built upon a team of professionals and experienced growers with a long-standing background in the world of cannabis. From the very beginning, our work has followed a clear and consistent objective: to develop and offer high-quality feminized seeds through carefully controlled production and an unwavering commitment to excellence.

All our production is carried out indoors in Europe, under strictly controlled conditions. Every stage of the process is monitored in detail—from light cycles and temperature to humidity and nutrition—ensuring the stability, vigor, and uniformity of each genetic line. Carefully selected mother plants are preserved and maintained to guarantee a solid, reliable, and consistent genetic foundation across all our batches.

Greenbud Seeds produces its seeds exclusively from elite cuttings, resulting in plants known for their strong performance, high productivity, and consistent behavior across different growing environments. Our catalogue brings together time-tested classic strains and exclusive new genetics developed through limited-edition crosses, aimed at growers seeking authentic flavours, potency, productivity, and distinctive character.

Each variety in our collection delivers resin-rich, aromatic, and highly productive

plants, with different indica and sativa dominances. Our genetics are available in Feminized, Autoflowering, Early Version, and Regular formats. Every line is selected according to strict quality criteria, following years of research focused on identifying specimens with exceptional hybrid vigor and refined organoleptic profiles.

Our seed selection process is meticulous and entirely manual. Germination tests consistently exceed a 95% success rate, ensuring that only the finest seeds reach our customers. We apply a highly reliable feminization process, guaranteeing an exceptionally high percentage of female plants when grown under proper conditions.

In 2025, to mark our 10th anniversary, we introduced a new packaging design developed to protect seeds from environmental fluctuations and to preserve their quality over time. In parallel, temperature- and humidity-controlled storage conditions ensure that each seed retains its full germination potential until the moment it reaches the grower.

Our commitment remains unchanged since day one: to provide exclusive, productive, and top-quality genetics, supported by rigorous work and the passion of a team that understands exactly what growers expect from a trusted seed bank.



NICE CHAP, NO GENERAL GREENBUD NICE CHAP, NO GENERAL
— SELECTED SEEDS —



Inhale. Hold it. Share.
SMILE

C99

AUTOFLOWERING LIMITED EDITION

CINDERELLA 99 × SELECTED RUDERALIS

SUMMARY TABLE

Genetics:	Cinderella 99 × Selected Ruderalis AUTOFLOWERING · LIMITED EDITION
Hybrid:	Sativa Dominant (70% – 30%)
THC:	20%
CBD:	<1%
Flowering Time (Indoor):	9–10 weeks from seed to harvest
Harvest Time (Outdoor):	Not dependent on photoperiod
Yield:	Indoor 400–500 g/m ² · Outdoor 80–100 g/plant
Height:	Indoor 70–90 cm · Outdoor up to 1.2 m
Effect:	Energetic · Uplifting · Creative · Clear-headed · Social
Flavour:	Sweet · Pineapple · Citrus · Floral · Fresh
Aroma:	Fruity · Tropical · Earthy · Floral
Resistance:	High to Pests · Mold · Humidity
Terpene Profile:	Dominant in Limonene · Myrcene · Pinene
Cultivation Difficulty:	Easy
Best For:	Growers seeking a fast, compact sativa-leaning autoflower with tropical expression

C99 Auto is the autoflowering adaptation of Cinderella 99, developed through its cross with a selected Ruderalis line in order to preserve the defining tropical character and clear cerebral effect of the original while introducing a fast and autonomous lifecycle. As a Limited Edition, this version focuses on maintaining aromatic intensity and structural balance within a compact, manageable format.

The plant develops a medium structure with good lateral branching and clean internodal spacing, allowing light penetration and uniform flower development. Indoors it typically reaches 70–90 cm, while outdoors it can approach 1.2 m under favourable conditions. The full cycle completes in 9–10 weeks from seed to harvest. Buds form dense, resin-coated clusters with a consistent calyx-to-leaf ratio, making trimming straightforward. Resistance to pests, mold and humidity is high, supporting reliable performance across varied environments.

The aromatic profile remains faithful to its lineage: pronounced notes of pineapple and sweet citrus layered over a light floral background and subtle earthy depth. The flavour is clean and persistent, with a refreshing tropical character. The effect begins with a clear, energetic cerebral lift that enhances focus and sociability, gradually settling into a light physical relaxation without heaviness. It is well suited for creative activities, daytime use and growers seeking a fast sativa-leaning autoflower with expressive flavour and stable behaviour.



GORILLA BIG BUD

AUTOFLOWERING LIMITED EDITION

GORILLA GLUE × (NORTHERN LIGHTS × BIG BUD) × RUDERALIS

SUMMARY TABLE

Genetics:	Gorilla Glue × (Northern Lights × Big Bud) × Ruderalis Autoflowering · Limited Edition
Hybrid:	Indica Dominant (70% – 30%)
THC:	22%
CBD:	<1%
Flowering Time (Indoor):	9–10 weeks from seed to harvest
Harvest Time (Outdoor):	Not dependent on photoperiod
Yield:	Indoor 450–550 g/m ² · Outdoor 100–120 g/plant
Height:	Indoor 90–120 cm · Outdoor up to 1.4 m
Effect:	Relaxing · Full-Body · Calming · Euphoric · Restorative
Flavour:	Earthy · Pine · Sweet Wood · Dark Fruit · Kush · Citrus
Aroma:	Pungent · Woody · Diesel · Hashy · Spicy · Earthy
Resistance:	Very High to Pests · Mold · Humidity
Terpene Profile:	Dominant in Myrcene · Caryophyllene · Limonene
Cultivation Difficulty:	Easy – Moderate
Best For:	Growers seeking a high-yielding, resinous indica-dominant autoflower with deep relaxing effects

Gorilla Big Bud Auto is an autoflowering Limited Edition developed from the cross between Gorilla Glue and (Northern Lights × Big Bud), later stabilised with Ruderalis to ensure full autonomy. The breeding objective was clear: to merge the resin intensity and potency associated with Gorilla Glue with the structural solidity and production capacity of the Northern Lights and Big Bud lineage, while maintaining a fast and reliable lifecycle.

The plant forms a medium to tall structure, reaching 90–120 cm indoors and up to 1.4 m outdoors under optimal conditions. It develops thick central stems and strong lateral branching capable of supporting large, compact flowers. Internodal spacing remains balanced, promoting dense bud stacking without compromising airflow. The full cycle completes in 9–10 weeks from seed to harvest. Flower clusters are voluminous, heavily coated in resin, and display a tight calyx formation. Resistance to pests, mold and humidity is very high, supporting consistent performance in both indoor and outdoor environments.

Aromatic expression is deep and layered. Earthy pine and sweet wood form the base, followed by diesel nuances, hashy spice and a subtle citrus lift. On the palate, darker tones reminiscent of forest soil, ripe fruit and Kush persist with a lingering sweetness. The effect unfolds as a pronounced physical relaxation that eases muscular tension and slows the pace of thought without mental fog. It settles into a calm, steady state suitable for evening use, rest or contemplative moments. This variety is oriented toward growers seeking yield, resin density and a structured indica-dominant profile in autoflowering format.



GORILLA ZKITTLEZ

AUTOFLOWERING LIMITED EDITION

GORILLA GLUE × ZKITTLEZ × RUDERALIS

SUMMARY TABLE

Genetics:	Gorilla Glue × Zkittlez × Ruderalis Autoflowering · Limited Edition
Hybrid:	Balanced Hybrid (55 % Indica – 45 % Sativa)
THC:	21%
CBD:	<1%
Flowering Time (Indoor):	9–10 weeks from seed to harvest
Harvest Time (Outdoor):	Not dependent on photoperiod
Yield:	Indoor 450–500 g/m ² · Outdoor 90–110 g/plant
Height:	Indoor 80–110 cm · Outdoor up to 1.3 m
Effect:	Euphoric · Uplifting · Creative · Relaxing · Balanced
Flavour:	Fruity · Tropical Candy · Citrus · Creamy · Pine · Diesel
Aroma:	Sweet · Tropical · Citrus · Earthy · Woody · Fuel
Resistance:	High to Pests · Mold · Humidity
Terpene Profile:	Dominant in Limonene · Myrcene · Caryophyllene
Cultivation Difficulty:	Easy
Best For:	Growers seeking a flavour-focused, balanced autoflower with abundant resin and expressive terpene profile

Gorilla Zkittlez Auto is an autoflowering Limited Edition created from the cross between Gorilla Glue and Zkittlez, later stabilised with Ruderalis to ensure full automatic flowering and structural consistency. The breeding objective was to combine the dense resin production and strength of Gorilla Glue with the expressive, fruit-forward terpene profile of Zkittlez in a fast and manageable format.

The plant develops a medium structure, reaching 80–110 cm indoors and up to 1.3 m outdoors in favourable conditions. It forms a solid central cola supported by firm lateral branches capable of carrying compact, trichome-rich flowers. Internodal spacing remains balanced, allowing proper airflow and homogeneous bud stacking. The full cycle completes in 9–10 weeks from germination. Yields indoors reach 450–500 g/m², with consistent performance outdoors. Resin production is abundant, coating dense calyx formations and contributing to strong aromatic expression. Resistance to pests, mold and humidity is high, supporting stable cultivation across different climates.

The aromatic profile is vivid and layered. Sweet tropical fruit and citrus peel dominate the first impression, followed by creamy candy nuances and subtle pine and fuel undertones. On the palate, the flavour remains fruity and exotic with a persistent sweetness and light earthy depth. The effect begins with a clear euphoric lift that enhances mood and creativity, gradually evolving into a gentle physical relaxation that maintains mental clarity. It is well suited for social environments, artistic focus or balanced evening use.



Mimosa Afghan Storm Auto is an autoflowering Limited Edition developed to mark Greenbud Seeds' tenth anniversary, combining modern terpene expression with the structural reliability of Afghan lineage. It originates from the cross between Mimosa (Clementine × Purple Punch) and Afghan Storm Auto, a selected Super Skunk phenotype previously stabilised in automatic format. The breeding objective was to integrate vibrant citrus complexity with classic indica depth in a fast, compact plant.

The structure is medium and vigorous, reaching 70–100 cm indoors and up to 1.2 m outdoors. It develops firm lateral branches and a stable central stem capable of supporting dense floral clusters. Internodal spacing remains balanced, promoting homogeneous flower formation and adequate airflow. The full lifecycle completes in 65–70 days from seed to harvest. Indoors, production ranges between 350–400 g/m², while outdoor plants yield 60–100 g per plant depending on conditions. Buds are compact, resin-rich and well formed, with consistent coverage across upper and lateral sites. Resistance to pests and humidity is high, supporting reliable cultivation in diverse environments.

The aromatic profile merges sweet orange zest, ripe grape and blueberry tones with an earthy skunk and light spice foundation. On the palate, bright citrus leads, followed by creamy fruit nuances and subtle herbal depth. The effect initiates with a lively cerebral lift that enhances mood and creative engagement, gradually transitioning into a warm, physical relaxation that remains functional and balanced. It is suited to growers seeking aromatic complexity, structural stability and equilibrium between stimulation and calm in autoflowering format.

MIMOSA AFGHAN STORM

AUTOFLOWERING LIMITED EDITION

MIMOSA (CLEMANTINE × PURPLE PUNCH) × AFGHAN STORM AUTO (SUPER SKUNK PHENOTYPE)

SUMMARY TABLE

Genetics:	Mimosa (Clementine × Purple Punch) × Afghan Storm Auto (Super Skunk phenotype)
Hybrid:	Balanced Hybrid (50 % Indica – 50 % Sativa)
THC:	20 %
CBD:	<1%
Flowering Time (Indoor):	65–70 days from seed to harvest
Harvest Time (Outdoor):	Not dependent on photoperiod
Yield:	Indoor 350–400 g/m ² · Outdoor 60–100 g/plant
Height:	Indoor 70–100 cm · Outdoor up to 1.2 m
Effect:	Cerebral · Energetic · Uplifting · Physical · Relaxing · Balanced
Flavour:	Sweet · Fruity · Citrus · Orange · Grapes · Blueberries · Earthy
Aroma:	Fresh · Skunky · Citrus · Spicy · Fruity · Herbal
Resistance:	High to Pests · Humidity
Terpene Profile:	Dominant in Limonene · Myrcene · Ocimene
Cultivation Difficulty:	Easy – Moderate
Best For:	Growers seeking a balanced autoflower with citrus-forward expression and classic Afghan depth

Inhale. Hold it. Share.
SMILE



NICE CHAP, NO GENERAL **GREENBUD** NICE CHAP, NO GENERAL
SELECTED SEEDS

Inhale. Hold it. Share.
SMILE

OG KUSH XL

AUTOFLOWERING LIMITED EDITION

(OG KUSH × SECRET) × SELECTED RUDERALIS

OG Kush XL Auto is an autoflowering Limited Edition derived from (OG Kush × Secret) crossed with a selected Ruderalis line to ensure automatic flowering and structural consistency. The objective behind this development was to preserve the dense aromatic depth and physical intensity associated with OG genetics while increasing productivity and maintaining a fast lifecycle.

The plant exhibits vigorous, upright growth with thick stems and strong lateral branching. Indoors it reaches 90–120 cm, while outdoor specimens can extend up to 1.5 m under favourable conditions. Internodal spacing is moderate, allowing compact flower stacking without excessive leaf density. The full cycle completes in 9–10 weeks from seed to harvest. Indoor yields reach 500–550 g/m², with outdoor plants producing up to 130 g per plant. Buds are dense, resin-coated and structurally firm, with a high calyx concentration and consistent formation across the canopy. Resistance to pests, mold and humidity is very high, supporting cultivation in diverse climates.

The aromatic profile is characteristically Kush-driven: earthy and woody at its core, layered with pine resin, citrus peel and fuel notes, accompanied by subtle spice and damp soil undertones. The flavour is dense and persistent, leaving a grounded, musky aftertaste. The effect develops progressively, beginning with a subtle mental slowdown before settling into a pronounced full-body relaxation that eases muscular tension and encourages stillness. It is particularly suited for evening use and for growers seeking an indica-dominant autoflower with substantial yield and classic OG depth.

SUMMARY TABLE

Genetics:	(OG Kush × Secret) × Selected Ruderalis Autoflowering · Limited Edition
Hybrid:	Indica Dominant (70% – 30%)
THC:	22%
CBD:	<1%
Flowering Time (Indoor):	9–10 weeks from seed to harvest
Harvest Time (Outdoor):	Not dependent on photoperiod
Yield:	Indoor 500–550 g/m ² · Outdoor up to 130 g/plant
Height:	Indoor 90–120 cm · Outdoor up to 1.5 m
Effect:	Deeply Relaxing · Grounding · Heavy Body · Calming · Stress Relief
Flavour:	Earthy · Pine · Citrus Peel · Spicy · Fuel · Forest Soil
Aroma:	Intense · Woody · Diesel · Hashy · Earthy · Damp Moss
Resistance:	Very High to Pests · Mold · Humidity
Terpene Profile:	Dominant in Myrcene · Limonene · Caryophyllene
Cultivation Difficulty:	Moderate
Best For:	Growers seeking a vigorous, high-yielding Kush autoflower with pronounced physical relaxation



STRAWBERRY GORILLA

AUTOFLOWERING LIMITED EDITION

STRAWBERRY BANANA × GORILLA (MALE)

SUMMARY TABLE

Genetics:	Strawberry Banana × Gorilla (Male) Autoflowering · Limited Edition
Hybrid:	Balanced Hybrid (60% Indica – 40% Sativa)
THC:	22%
CBD:	<1%
Flowering Time (Indoor):	9–10 weeks from seed to harvest
Harvest Time (Outdoor):	Not dependent on photoperiod
Yield:	Indoor 450–500 g/m ² · Outdoor up to 120 g/plant
Height:	Indoor 80–110 cm · Outdoor up to 1.3 m
Effect:	Euphoric · Creative · Relaxing · Balanced · Long-lasting
Flavour:	Strawberry · Banana · Fruity · Earthy · Pine · Diesel · Spicy
Aroma:	Sweet · Fruity · Tropical · Woody · Fuel · Creamy
Resistance:	High to Pests · Mold · Humidity
Terpene Profile:	Dominant in Limonene · Myrcene · Caryophyllene
Cultivation Difficulty:	Easy – Moderate
Best For:	Growers seeking a resin-rich, fruit-forward autoflower with balanced potency and structural stability

Strawberry Gorilla Auto is an autoflowering Limited Edition developed from the cross between Strawberry Banana and a selected Gorilla male, later stabilised to ensure automatic flowering and structural uniformity. The breeding objective was to merge the creamy, fruit-driven profile of Strawberry Banana with the resin density and structural firmness characteristic of Gorilla lineage, creating a fast and productive hybrid with strong aromatic identity.

The plant develops a medium structure, reaching 80–110 cm indoors and up to 1.3 m outdoors under favourable conditions. Growth is vigorous during the early phase, forming solid lateral branches and a stable main cola capable of supporting dense floral clusters. Internodal spacing remains balanced, encouraging uniform bud formation and efficient light penetration. The full lifecycle completes in 9–10 weeks from seed to harvest. Indoor production reaches 450–500 g/m², with outdoor plants yielding up to 120 g per plant. Buds are compact, heavily coated in trichomes and exhibit consistent calyx development across the canopy. Resistance to pests, mold and humidity is high.

The aromatic profile combines ripe strawberry and sweet banana with a deeper base of earth, pine and light diesel tones inherited from the Gorilla side. On the palate, fruity sweetness integrates with subtle spice and woody depth, producing a layered and persistent flavour. The effect begins with a clear euphoric lift and mental brightness, gradually transitioning into a warm physical relaxation that remains balanced and functional. It is suitable for creative sessions, late afternoon use or for growers seeking a fruit-forward autoflower with resin density and stable behaviour.



WEST COAST OG

AUTOFLOWERING LIMITED EDITION

(WEST COAST OG × SECRET) × SELECTED RUDERALIS

SUMMARY TABLE

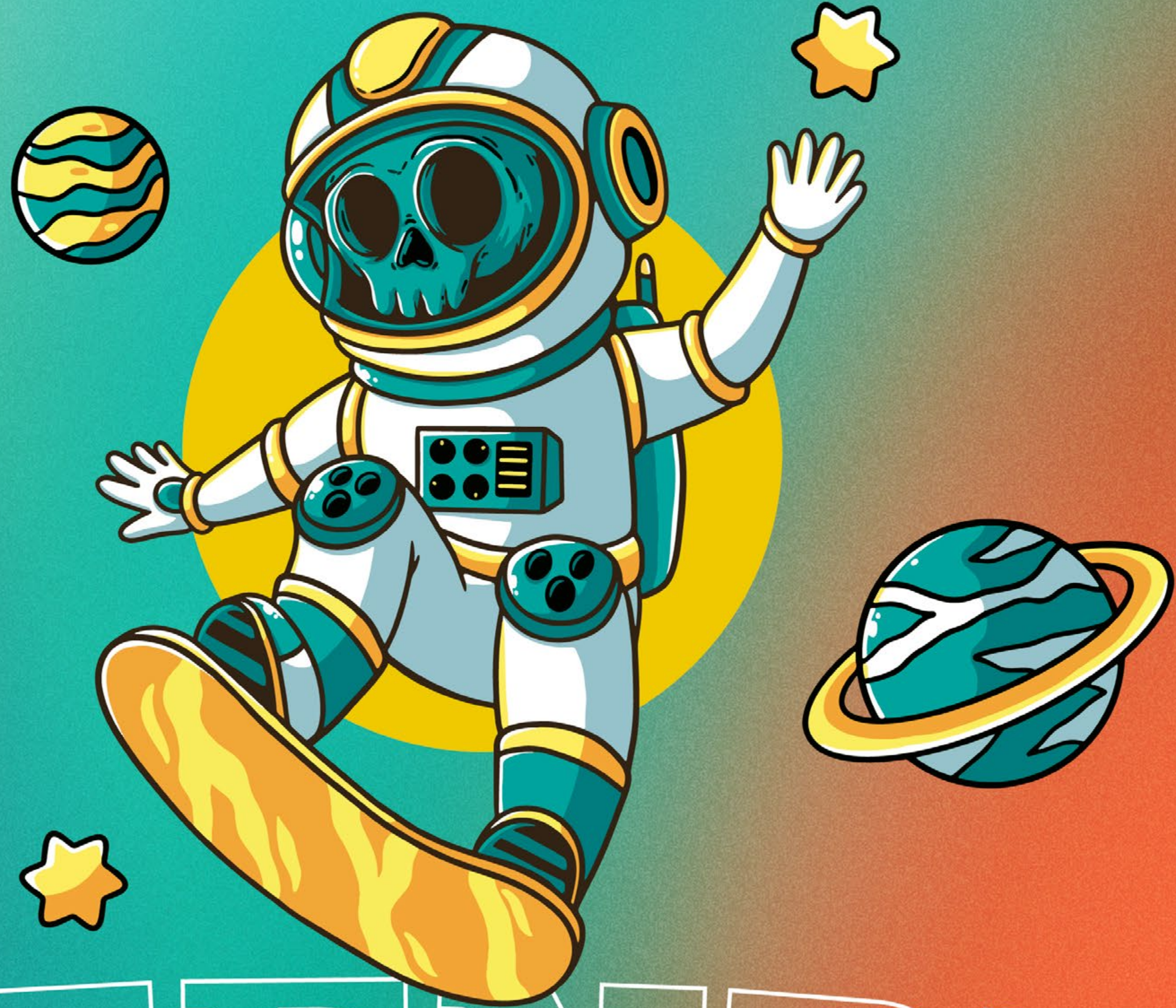
Genetics:	(West Coast OG × Secret) × Selected Ruderalis Autoflowering · Limited Edition
Hybrid:	Indica Dominant (70% – 30%)
THC:	22%
CBD:	<1%
Flowering Time (Indoor):	9–10 weeks from seed to harvest
Harvest Time (Outdoor):	Not dependent on photoperiod
Yield:	Indoor 450–550 g/m ² · Outdoor up to 120 g/plant
Height:	Indoor 90–110 cm · Outdoor up to 1.3 m
Effect:	Relaxing · Clear-headed · Harmonious · Balanced · Soothing
Flavour:	Earthy · Pine · Citrus · Woody · Spicy · Diesel
Aroma:	Deep · Fresh · Woody · Earthy · Subtle Fuel · Herbal
Resistance:	Very High to Pests · Mold · Humidity
Terpene Profile:	Dominant in Limonene · Myrcene · Caryophyllene
Cultivation Difficulty:	Easy
Best For:	Growers seeking a stable OG autoflower with clean aromatic definition and balanced relaxation

West Coast OG Auto is an autoflowering Limited Edition developed from (West Coast OG × Secret) crossed with a selected Ruderalis line to ensure full automatic flowering and structural stability. The breeding objective was to preserve the aromatic clarity and balanced psychoactive profile associated with classic OG lineage while refining growth behaviour and maintaining a fast lifecycle.

The plant develops a compact yet well-proportioned structure, reaching 90–110 cm indoors and up to 1.3 m outdoors under favourable conditions. A defined central cola is supported by evenly distributed lateral branches, promoting uniform bud stacking and consistent light penetration. Internodal spacing is moderate, helping to maintain density without excessive leaf mass. The full cycle completes in 9–10 weeks from seed to harvest. Indoor yields range from 450–550 g/m², with outdoor production reaching up to 120 g per plant. Flowers are dense, resin-rich and compact, with stable formation across the canopy. Resistance to pests, mold and humidity is very high.

The aromatic profile reflects a classic OG structure: earthy and pine-driven at its core, layered with fresh citrus peel, subtle wood, spice and restrained fuel undertones. On the palate, the flavour remains clean and defined, balancing freshness with warmth and depth. The effect begins with a gentle cerebral lift that enhances clarity and presence, gradually transitioning into a soothing physical relaxation that avoids heaviness. It is suitable for reflective moments, creative focus or calm evening use, offering a stable and refined OG expression in autoflowering format.

COLLECTOR'S ITEM ONLY.
NOT SUITABLE FOR HUMAN CONSUMPTION
OR AGRICULTURAL USE.
SALE TO MINORS IS PROHIBITED.
DISTRIBUTED BY ESB98728231



OLD FASHIONED