



GREENBUD

— SELECTED SEEDS —

Inhale. Hold it. Share.

SMILE

NICE CHAP. NO GENERAL

NICE CHAP. NO GENERAL

FEM CLASSIC LINE



PREMIUM

CULTIVATING EXCELLENCE SINCE OUR BEGINNINGS

Greenbud Seeds. **Genetics you trust, cultivated with precision.**

Founded in 2015, Greenbud Seeds is built upon a team of professionals and experienced growers with a long-standing background in the world of cannabis. From the very beginning, our work has followed a clear and consistent objective: to develop and offer high-quality feminized seeds through carefully controlled production and an unwavering commitment to excellence.

All our production is carried out indoors in Europe, under strictly controlled conditions. Every stage of the process is monitored in detail—from light cycles and temperature to humidity and nutrition—ensuring the stability, vigor, and uniformity of each genetic line. Carefully selected mother plants are preserved and maintained to guarantee a solid, reliable, and consistent genetic foundation across all our batches.

Greenbud Seeds produces its seeds exclusively from elite cuttings, resulting in plants known for their strong performance, high productivity, and consistent behavior across different growing environments. Our catalogue brings together time-tested classic strains and exclusive new genetics developed through limited-edition crosses, aimed at growers seeking authentic flavours, potency, productivity, and distinctive character.

Each variety in our collection delivers resin-rich, aromatic, and highly productive

plants, with different indica and sativa dominances. Our genetics are available in Feminized, Autoflowering, Early Version, and Regular formats. Every line is selected according to strict quality criteria, following years of research focused on identifying specimens with exceptional hybrid vigor and refined organoleptic profiles.

Our seed selection process is meticulous and entirely manual. Germination tests consistently exceed a 95% success rate, ensuring that only the finest seeds reach our customers. We apply a highly reliable feminization process, guaranteeing an exceptionally high percentage of female plants when grown under proper conditions.

In 2025, to mark our 10th anniversary, we introduced a new packaging design developed to protect seeds from environmental fluctuations and to preserve their quality over time. In parallel, temperature- and humidity-controlled storage conditions ensure that each seed retains its full germination potential until the moment it reaches the grower.

Our commitment remains unchanged since day one: to provide exclusive, productive, and top-quality genetics, supported by rigorous work and the passion of a team that understands exactly what growers expect from a trusted seed bank.



Inhale. Hold it. Share.

SMILE

BLACK GOLD

FEMINIZED CLASSIC LINE

KOSHER TANGIE × BLACK IN BLACK

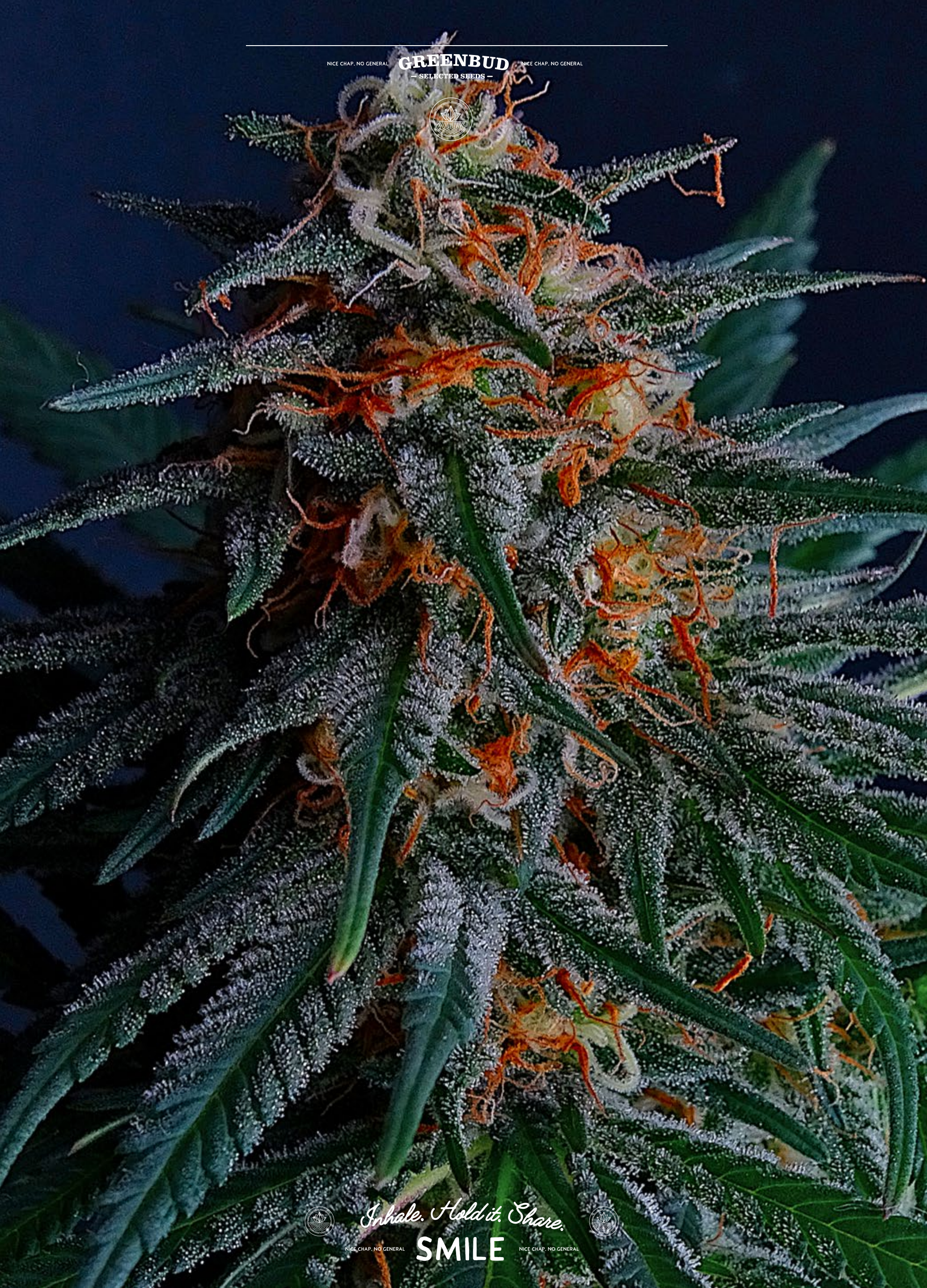
SUMMARY TABLE

Genetics:	Kosher Tangie × Black in Black
Type:	Feminized · Photoperiod
Hybrid:	Indica Dominant (70% – 30%)
THC:	22 – 25%
CBD:	<1%
Flowering Time (Indoor):	63 days (9 weeks)
Harvest Time (Outdoor):	Late September – Early October
Yield:	Indoor 550 – 650 g/m ² · Outdoor 700 – 800 g/plant
Height:	Medium-Tall Indoor (110 – 150 cm) · Outdoor up to 2.5 m
Effect:	Creative & Playful · Balanced & Long-Lasting · Mental uplift followed by soothing physical relaxation
Flavour:	Sweet Orange · Ripe Tangerine · Earthy Incense · Aged Wood
Aroma:	Citrus Zest · Woody · Earthy · Incense Undertones
Resistance:	High to mould and pests
Terpene Profile:	Dominant in Limonene, Myrcene and Caryophyllene
Cultivation Difficulty:	Easy to Moderate
Best For:	Growers seeking a flavour-rich, resinous, high-yield Indica-dominant hybrid

Black Gold is an Indica-dominant hybrid created from the meeting of Kosher Tangie and Black in Black, combining a clear citrus-led aromatic profile with dense resin expression and a solid, reliable structure. Vegetative growth is marked by strong vertical development, while structural control techniques such as topping, LST and SCROG are well tolerated, reinforcing lateral branching and contributing to an even canopy with compact floral sites.

Flowering indoors completes in 63 days, producing thick, trichome-rich flowers with a firm and weighty structure. Outdoors, full maturity is reached between late September and early October, with consistent results in both bud density and resin formation. The aromatic profile opens with defined notes of sweet orange peel and ripe tangerine, gradually evolving into deeper nuances of earthy incense and aged wood. This layered expression remains stable after curing.

The effect develops progressively, beginning with a light, playful mental activation and creative clarity, before transitioning into a calm and sustained physical relaxation. The experience remains balanced and long-lasting, without abrupt shifts or excessive sedation. High resistance to mould and common pests contributes to overall stability and reliability across different environments.



Inhale. Hold it. Share.

SMILE

Black in Black is a pure Indica strain developed through a rigorous selection of the most stable, compact and resin-rich individuals within our genetic library. Designed to express the essential traits of traditional Indica lines, this variety stands out for its robustness, uniformity and ease of cultivation, making it a reliable choice for growers seeking consistency and classic performance.

From early growth, Black in Black shows a vigorous yet compact structure, with broad, dark green leaves and a rapid vegetative response. Her balanced internodal spacing and strong lateral branching allow for efficient space management, particularly in indoor environments. She adapts well to a wide range of cultivation conditions and demonstrates a naturally high resistance to common pests and fungal issues.

During flowering, Black in Black produces dense, heavy buds with a tight structure, thoroughly coated in thick, aromatic resin. This abundant trichome production makes her especially suitable for hash and resin extractions. Aromatically, she delivers a traditional profile combining spicy and fruity notes over a deep earthy base, reminiscent of forest soil and classic old-school hash varieties.

The effect is deeply physical and long-lasting, characterised by profound muscular relaxation and a calm, settled mental state. Black in Black embodies the timeless expression of pure Indica genetics, valued for her resin output, stability and unmistakable traditional character.

BLACK IN BLACK

FEMINIZED CLASSIC LINE

PURE INDICA SELECTION

SUMMARY TABLE

Genetics:	Pure Indica Selection
Type:	Feminized · Photoperiod
Hybrid:	100% Indica
THC:	20 – 23 %
CBD:	Low <1%
Flowering Time (Indoor):	56 – 63 days
Harvest Time (Outdoor):	Late September – Early October
Yield:	Indoor 500 – 600 g/m ² · Outdoor up to 700 g/plant
Height:	Medium Indoor (90 – 130 cm) · Outdoor up to 2.0 m
Effect:	Deep Physical Relaxation · Long-Lasting Calm · Mental Serenity
Flavour:	Spicy · Fruity · Earthy · Old-School Hash
Aroma:	Rich Earth · Forest Notes · Spicy-Fruity Undertones
Resistance:	High resistance to mould and pests
Terpene Profile:	Dominant Myrcene, Caryophyllene, Limonene
Cultivation Difficulty:	Easy
Best For:	Growers seeking a pure Indica with high resin production and a classic hash profile



Inhale. Hold it. Share.
SMILE

Blueberry 99 is a well-established Sativa-dominant hybrid that brings together the unmistakable aromatic richness of Blueberry with the structural vigor and productivity of Cinderella 99. This combination results in a stable, reliable variety appreciated for its balance between expressive flavour, energetic effect and consistent yields. Over the years, Blueberry 99 has proven to be a dependable option for growers seeking a classic profile with a lively character.

The plant develops with medium to tall stature, displaying strong apical growth supported by generous lateral branching and well-spaced internodes. She responds well to training techniques and adapts comfortably to both indoor and outdoor environments. Flowering completes in 60–65 days indoors, producing compact, resin-coated buds with a firm structure. Under cooler conditions, flowers and foliage may express subtle blue and purple tones, enhancing her visual appeal without compromising uniformity or stability. Natural resistance to mould and pests makes her suitable for a wide range of climates.

Aromatically, Blueberry 99 offers a layered profile dominated by sweet blueberry and wild berry notes, supported by hints of fresh wood and a light tropical nuance reminiscent of pineapple. The effect unfolds with a clear, uplifting mental stimulation that encourages creativity and focus, gradually settling into a balanced and functional physical state. This makes her particularly well suited for daytime use, social settings or moments requiring sustained mental clarity without excessive heaviness.

BLUE-BERRY 99

FEMINIZED CLASSIC LINE

BLUEBERRY × CINDERELLA 99

SUMMARY TABLE

Genetics:	Blueberry × Cinderella 99
Type:	Feminized · Classic Line
Hybrid:	Sativa Dominant (65 % Sativa – 35 % Indica)
THC:	21 – 24 %
CBD:	<1%
Flowering Time (Indoor):	60 – 65 days
Harvest Time (Outdoor):	Mid to Late October
Yield:	Indoor 550 – 650 g/m ² · Outdoor up to 800 g/plant
Height:	Medium–Tall Indoor (110 – 150 cm) · Outdoor up to 2.5 m
Effect:	Energetic · Creative · Long-Lasting · Clear Mental Stimulation
Flavour:	Sweet Blueberry · Wild Berries · Pineapple · Fresh Wood
Aroma:	Fruity · Sweet · Tropical · Light Woody Notes
Resistance:	High resistance to mould and pests
Terpene Profile:	Myrcene, Pinene, Limonene
Cultivation Difficulty:	Easy to Moderate
Best For:	Growers seeking a productive, flavourful and uplifting Sativa-dominant hybrid



CHOCO CANDY

FEMINIZED CLASSIC LINE

CHOCOLOPE × AFGHAN KUSH

SUMMARY TABLE

Genetics:	Chocolope × Afghan Kush
Type:	Feminized · Classic Line
Hybrid:	Sativa Dominant (60% Sativa – 40% Indica)
THC:	20 – 23%
CBD:	<1%
Flowering Time (Indoor):	58 – 63 days
Harvest Time (Outdoor):	Early to Mid-October
Yield:	Indoor 550 – 600 g/m ² · Outdoor up to 700 g/plant
Height:	Medium–Tall Indoor (110 – 160 cm) · Outdoor up to 2.5 m
Effect:	Cerebral · Euphoric · Balanced with mild physical relaxation
Flavour:	Dry Cocoa · Earthy · Woody · Hash with subtle menthol notes
Aroma:	Chocolate · Kush · Hash · Woody notes
Resistance:	High resistance to mould and pests
Terpene Profile:	Caryophyllene, Myrcene, Linalool
Cultivation Difficulty:	Easy to Moderate
Best For:	Growers seeking a flavour-driven Sativa hybrid with classic hash and cocoa character

Choco Candy is a refined Sativa-dominant hybrid born from the classic combination of Chocolope and Afghan Kush, bringing together vigorous growth, generous productivity and a deeply evocative aromatic character. Developed for growers who value both structure and flavour, this variety stands out for its balance between ease of cultivation, expressive resin production and a clear, uplifting effect.

Tall and well-structured, Choco Candy develops a strong main stem with long internodal spacing and pronounced lateral branching. This architecture makes her especially suitable for SCROG systems and training techniques, allowing excellent light penetration and uniform flower formation. She adapts well to a wide range of cultivation environments, performing reliably indoors while fully expressing her size and yield potential outdoors. With an indoor flowering period of 58–63 days, she produces dense, compact buds with a solid, resinous texture.

The aromatic and flavour profile is deep and layered, clearly oriented toward classic hash expressions. Dry cocoa notes form the core of the profile, supported by earthy and woody undertones and subtle hints of spice and menthol. The result is a warm, clean and persistent smoke that evokes unsweetened cocoa and traditional Afghan hash, with a refined, old-school character.

The effect of Choco Candy is potent and predominantly cerebral. It begins with a clear, euphoric lift that encourages creativity and sociability, gradually settling into a balanced physical relaxation that remains light and functional. Versatile and well-rounded, Choco Candy is a Sativa expression appreciated for its aromatic depth, structural reliability and timeless character.

Inhale. Hold it. Share.

SMILE



Inhale. Hold it. Share.

SMILE

GOLD WAVE

FEMINIZED CLASSIC LINE

BLACK GOLD GG#4 × ZKITTLEZ

SUMMARY TABLE

Genetics:	Black Gold × GG#4 × Zkittlez
Type:	Feminized · Photoperiod
Hybrid:	Balanced Hybrid (55 % Indica – 45 % Sativa)
THC:	22 – 25 %
CBD:	Low 1 %
Flowering Time (Indoor):	63 days (9 weeks)
Harvest Time (Outdoor):	Late September – Early October
Yield:	Indoor 550 – 650 g/m ² · Outdoor up to 800 g/plant
Height:	Medium (Indoor 100 – 140 cm) · Outdoor up to 2.2 m
Effect:	Creative · Calming · Happy · Mentally Stimulating & Physically Relaxing
Flavour:	Sweet · Fruity · Orange · Earthy · Cocoa & Coffee Notes
Aroma:	Strong · Citrus-Sweet · Earthy-Spicy · Chocolate Hints
Resistance:	High to Mould and Pests
Terpene Profile:	Dominant in Limonene, Myrcene and Caryophyllene
Cultivation Difficulty:	Easy to Moderate
Best For:	Growers seeking a balanced, flavour-rich hybrid with both uplifting and relaxing effects

Gold Wave is a balanced hybrid that reflects a careful fusion of potency, aromatic depth and structural reliability. Created from the union of Black Gold and GG#4 × Zkittlez, this variety brings together classic sweetness and modern resin performance in a profile designed for consistency, flavour and controlled intensity.

In cultivation, Gold Wave develops a medium-sized structure with balanced internodal spacing and strong lateral branching. Her growth is orderly and adaptable, responding well to both indoor environments and outdoor conditions with sufficient light and airflow. With a flowering cycle of 63 days, she forms dense, compact flowers with a firm texture and a generous resin coating. The buds show vivid green tones accented by bright orange pistils, maintaining a uniform appearance across the plant.

The aromatic expression is rich and layered. Sweet and fruity notes lead the profile, followed by citrus nuances reminiscent of orange peel. As the flowers mature, deeper earthy tones emerge, accompanied by subtle spicy accents and soft hints of cocoa and coffee that add warmth and complexity to the overall sensory experience.

The effect of Gold Wave unfolds in a balanced and composed manner. Mental stimulation appears first, bringing clarity, creativity and a positive mood, while the physical sensation remains calm and progressively relaxing. This equilibrium makes her suitable for a wide range of moments, from social interaction to creative focus or quiet introspection, offering a refined and stable experience without excess.



GREEN- POWER XL

FEMINIZED CLASSIC LINE

SELECTED AFRICAN LANDRACES

SUMMARY TABLE

Genetics:	Selected African Landraces
Type:	Feminized · Photoperiod
Hybrid:	Sativa Dominant (80 % Sativa · 20 % Indica)
THC:	20 – 23 %
CBD:	Low <1%
Flowering Time (Indoor):	56 days
Harvest Time (Outdoor):	Mid to Late October
Yield:	Indoor 550 – 650 g/m ² · Outdoor up to 800 g/plant
Height:	Tall (Indoor 120 – 170 cm) · Outdoor up to 2.8 m
Effect:	Psychoactive · Stimulating · Energetic · Creative
Flavour:	Earthy · Licorice · Fresh · Exotic
Aroma:	Pungent · Herbal · Earthy-Sweet
Resistance:	High to Mould and Pests
Terpene Profile:	Dominant in Terpinolene, Myrcene and Ocimene
Cultivation Difficulty:	Easy to Moderate
Best For:	Growers seeking a vigorous, exotic Sativa with fast flowering and an uplifting effect

Greenpower XL is a Sativa-dominant strain shaped from a careful selection of powerful African landraces, built for growers who value speed, resilience, and an unmistakably energetic profile. She combines the upright vigor and open architecture typical of classic equatorial genetics with an unexpectedly quick finish, delivering a plant that feels expansive in growth yet disciplined in timing. In the room she responds with enthusiasm, stretching decisively after the switch and forming long, sturdy branches that hold weight without hesitation.

Indoors, Greenpower XL settles into bloom rapidly and reaches full maturity in roughly 56 days, producing large, thick flowers with a firm, chunky build. Her structure favors airflow, and her natural resistance to pests and mould makes her a reliable option across varied environments, especially for those who want a strong Sativa character without fragile handling. Once dried and cured, the bouquet turns notably pungent, with herbal sharpness layered over an earthy sweetness that lingers in the jar.

The effect arrives fast and bright: a psychoactive, stimulating lift that pushes focus and creativity forward while keeping the mood active and social. On the palate, she leans into earthy depth and clean, licorice-like accents, finishing fresh and exotic rather than heavy. Greenpower XL fits best in daytime rhythms and lively settings, carrying the spirit of African heritage in a format tuned for modern cycles and consistent results.



Inhale. Hold it. Share.
SMILE

Jawbreaker 47 is a refined Sativa-dominant hybrid created from the union of Mexican Sativa and AK47, combining classic Sativa vitality with the structural reliability of a modern hybrid. This variety stands out for its balanced growth, expressive flavour profile and a notably fast flowering cycle for its genetic orientation, making it a dependable option for growers seeking efficiency without sacrificing character.

The plant develops with medium height and a stable, homogeneous structure, forming strong lateral branching and dense floral clusters. Indoors, Jawbreaker 47 responds particularly well to controlled environments, where proper airflow helps preserve flower integrity during the final stages of bloom. Outdoors, she adapts easily to temperate climates, reaching full maturity by mid to late October.

Resin production is generous and evenly distributed, contributing both to flavour depth and natural resistance against pests.

Aromatic expression is clean and layered, led by floral and spicy tones resting on a woody base, subtly refreshed by light citrus nuances. The flavour remains consistent from aroma to smoke, offering a refined and well-defined sensory profile.

The effect is uplifting and mentally stimulating, promoting creativity, focus and a clear sense of euphoria. Jawbreaker 47 is especially well suited for daytime use, social settings or creative activities, delivering an energetic yet controlled experience that reflects the evolution of contemporary Sativa-dominant genetics.

JAWBREAKER

47

FEMINIZED CLASSIC LINE

MEXICAN SATIVA × AK47

SUMMARY TABLE

Genetics:	Mexican Sativa × AK47
Type:	Feminized · Photoperiod
Hybrid:	Sativa Dominant (65 % Sativa – 35 % Indica)
THC:	21 – 24 %
CBD:	Below 1 %
Flowering Time (Indoor):	58 – 63 days
Harvest Time (Outdoor):	Mid to Late October
Yield:	Yield: (Indoor) 550 – 650 g/m ² · (Outdoor) up to 750 g/plant
Height:	Height: (Indoor) 100 – 130 cm · (Outdoor) up to 220 cm
Effect:	Creative · Euphoric · Uplifting · Energizing
Flavour:	Floral · Spicy · Woody · Citrus Touch
Aroma:	Fresh · Herbal · Woody-Spicy
Resistance:	High to pests · Medium to mould (ensure airflow indoors)
Terpene Profile:	Terpinolene, Pinene, Caryophyllene
Cultivation Difficulty:	Easy to Moderate
Best For:	Growers seeking a fast-flowering, flavour-rich Sativa hybrid with a strong uplifting effect



LEMON PIE

FEMINIZED CLASSIC LINE

SKUNK #1 × AMNESIA HAZE

SUMMARY TABLE

Genetics:	Skunk #1 × Amnesia Haze
Type:	Feminized · Photoperiod
Hybrid:	Sativa Dominant (70 % Sativa – 30 % Indica)
THC:	21 – 24 %
CBD:	<1%
Flowering Time (Indoor):	63 – 70 days
Harvest Time (Outdoor):	Mid to Late October
Yield:	Indoor up to 500 g/m ² · Outdoor around 600 g/plant
Height:	Indoor 100 – 140 cm · Outdoor up to 2.2 m
Effect:	Cerebral · Stimulating · Creative · Long-Lasting
Flavour:	Sweet Lemon · Herbal · Haze · Resinous
Aroma:	Fresh Citrus · Lemon Peel · Herbal
Resistance:	High resistance to mould and humidity
Terpene Profile:	Limonene · Terpinolene · Myrcene
Cultivation Difficulty:	Easy to Moderate
Best For:	Growers seeking an aromatic, energetic Sativa with balanced and strong resistance

Lemon Pie is a Sativa-dominant hybrid that brings together two timeless references of European cannabis breeding, combining Skunk #1 with Amnesia Haze to produce a variety defined by aromatic clarity, structural balance and a distinctly cerebral effect. This genetic pairing results in a plant that expresses classic Haze character while remaining accessible and reliable in cultivation.

Despite her predominantly Sativa profile, Lemon Pie completes flowering in a controlled 63–70 days indoors, offering an excellent compromise between vigour and cycle length. Plants develop long, well-supported branches with a strong central structure, capable of sustaining large, resin-rich flowers with a notably high calyx-to-leaf ratio. This morphology simplifies trimming and contributes to consistent yields across environments.

Aromatically, Lemon Pie stands out for her clean and expressive citrus profile. Fresh lemon peel dominates the bouquet, supported by herbal and slightly resinous undertones that intensify during flowering and remain stable after curing. On the palate, the smoke is smooth and bright, delivering sweet lemon notes layered over classic Haze nuances.

The effect is clearly cerebral, stimulating and persistent, promoting mental clarity, focus and creative activity. Its intensity makes Lemon Pie particularly suitable for daytime use by experienced consumers, while moderation is recommended for those less accustomed to Sativa-dominant varieties. Naturally resistant to mould and humidity, Lemon Pie is a dependable choice for growers seeking an uplifting, aromatic strain with proven genetics and stable performance.



Inhale. Hold it. Share.
SMILE

Loveless is an Indica-dominant strain developed from a carefully selected Skywalker OG line, refined to emphasise structure, resin production and a deep, calming effect. This variety stands out for its visual elegance, aromatic depth and a cultivation profile that combines robustness with ease of handling, making it suitable for both experienced growers and those seeking reliable results without complexity.

The plant develops a compact and sturdy architecture, with strong lateral branching and a naturally balanced internodal spacing. Loveless adapts well to indoor environments, where her controlled height allows efficient use of space, while outdoors she expresses greater vertical growth under favourable conditions. Flowering is relatively fast for an Indica-dominant strain, completing in approximately 58 to 63 days indoors. Buds form dense and heavy, with an excellent calyx-to-leaf ratio that simplifies trimming and highlights her generous resin coverage.

During the final stages of flowering, Loveless often displays deep blue and dark purple tones, adding a distinctive visual character to her already striking flowers. The aromatic profile is refined and layered, combining sweet and gently spicy notes with hints of citrus peel, fresh wood and subtle earthy nuances. When consumed, the flavour remains smooth and persistent, leaving a clean, citrus-woody aftertaste that lingers pleasantly.

The effect is deeply physical and long-lasting, promoting muscular relaxation and a pronounced sense of calm without abrupt sedation. Loveless is particularly well suited for evening use or moments of rest, offering a composed and enveloping experience that reflects her balanced and elegant genetic background.

LOVELESS

FEMINIZED CLASSIC LINE

SKYWALKER OG SELECTION X SECRET HYBRID

SUMMARY TABLE

Genetics:	Skywalker OG Selection x Secret Hybrid
Type:	Feminized · Photoperiod
Hybrid:	Indica Dominant (70% Indica · 30% Sativa)
THC:	22 – 25 %
CBD:	<1%
Flowering Time (Indoor):	58 – 63 days
Harvest Time (Outdoor):	Late September – Early October
Yield:	Indoor 550 – 650 g/m ² · Outdoor up to 750 g/plant
Height:	Indoor 100 – 130 cm · Outdoor up to 200 cm
Effect:	Physical · Relaxing · Long-Lasting · Calming
Flavour:	Sweet · Spicy · Lemon · Woody · Earthy
Aroma:	Fresh · Deep · Citrus-Spicy · Woody
Resistance:	High resistance to mould and pests
Terpene Profile:	Myrcene · Caryophyllene · Limonene
Cultivation Difficulty:	Easy
Best For:	Growers seeking a visually striking Indica with potent relaxation and refined flavour



Inhale. Hold it. Share.
SMILE

Makaha is a refined Indica-dominant hybrid born from an exquisite cross between (Hawai x Purple Skunk) and Do-Si-Dos, combining classic tropical flavour expression with a naturally high resin output. Developed to satisfy both experienced growers and those seeking deep physical relaxation, this variety stands out for its balance between productivity, flavour depth and calming effect.

Compact and sturdy in structure, Makaha adapts well to a wide range of cultivation environments, although she shows her full potential indoors. Her medium-low height and dense branching make her particularly suitable for controlled spaces and indoor setups. With a flowering period of 60–65 days, she produces dense, rock-hard buds generously coated in resin, highlighted by bright orange pistils and a thick layer of crystal trichomes.

The aromatic and flavour profile is rich and multi-layered. Sweet notes of ripe tropical fruit dominate the forefront, resting on a herbal and earthy base with musky undertones. Delicate hints of citrus peel, lavender blossom and soft pine resin add complexity and refinement, resulting in a smooth, warm and deeply aromatic smoke that evokes a relaxed, exotic atmosphere.

Makaha's effect is powerful, long-lasting and distinctly narcotic. It begins with a pleasant sense of happiness and euphoria, gradually melting into deep physical relaxation and often leading to drowsiness. Ideal for evening use or moments of rest, Makaha is a classic Indica expression, valued for its resin production, flavour intensity and unmistakably calming presence.

MAKAHA

FEMINIZED CLASSIC LINE

(HAWAI x PURPLE SKUNK) x DO-SI-DOS

SUMMARY TABLE

Genetics:	(Hawai x Purple Skunk) x Do-Si-Dos
Type:	Feminized · Photoperiod
Hybrid:	Indica Dominant (75 % Indica – 25 % Sativa)
THC:	22 – 25 %
CBD:	Low <1%
Flowering Time (Indoor):	Flowering Time (Indoor): 60–65 days (9 weeks)
Harvest Time (Outdoor):	Harvest Time (Outdoor): Early to Mid-October
Yield:	Indoor 550 – 650 g/m ² · Outdoor up to 750 g/plant
Height:	Medium-Low (Indoor 80 – 120 cm) · Outdoor up to 1.8 m
Effect:	Euphoric · Relaxing · Happy · Sedative · Long-Lasting
Flavour:	Sweet tropical fruit flesh, herbal and earthy base, with musky notes and soft hints of citrus peel, lavender and pine resin
Aroma:	Fruity · Floral · Earthy · Warm citrus-pine undertones
Resistance:	High to mould and pests
Terpene Profile:	Dominant in Myrcene, Limonene and Linalool
Cultivation Difficulty:	Easy to Moderate
Best For:	Growers seeking a compact, resin-rich Indica with tropical flavour and deeply relaxing effects



Inhale. Hold it. Share.
SMILE

SNOW RIPPER

FEMINIZED CLASSIC LINE

SECRET INDICA HYBRID

SUMMARY TABLE

Genetics:	Secret Indica Hybrid
Type:	Feminized · Photoperiod
Hybrid:	Indica Dominant (80% Indica · 20% Sativa)
THC:	20 – 23 %
CBD:	Low < 1%
Flowering Time (Indoor):	55 – 60 days
Harvest Time (Outdoor):	Late September – Early October
Yield:	Indoor 550 – 650 g/m ² · Outdoor up to 750 g per plant
Height:	Medium (Indoor 90 – 120 cm) · Outdoor up to 1.8 m
Effect:	Sedative · Relaxing · Anti-Stress · Physical
Flavour:	Fresh Forest · Spicy · Earthy Wood · Pine · Herbal
Aroma:	Green · Woody · Spicy · Damp Earth Notes
Resistance:	Very High to Pests and Mould
Terpene Profile:	Dominant in Myrcene, Pinene and Caryophyllene
Cultivation Difficulty:	Easy
Best For:	Growers seeking a fast, resinous Indica ideal for hash making and deep physical relaxation

Snow Ripper is a compact, Indica-dominant strain developed for growers who value speed, resilience and high resin production without sacrificing aromatic depth. Built on a discreet yet powerful genetic background, this variety expresses a classic Indica structure with a dense, bush-shaped profile, short internodal spacing and broad, dark green leaves that reinforce its robust appearance.

Well suited to indoor cultivation and controlled environments, Snow Ripper remains manageable in height while producing solid lateral branching capable of supporting heavy, resin-coated flowers. Flowering is notably fast, completing indoors in 55–60 days, and plants respond well to minimal intervention, making this strain accessible to less experienced growers while still rewarding advanced cultivation techniques.

The flowers are compact and heavy, fully wrapped in a thick layer of trichomes that give the variety its name. Resin production is one of Snow Ripper's defining traits, making it particularly suitable for hash and extract production. Outdoors, she performs reliably in temperate climates, finishing by late September or early October.

Aromatically, Snow Ripper delivers a grounded and immersive profile. Notes of fresh forest, damp earth and pine wood dominate, accompanied by subtle spicy undertones that add depth and persistence. The flavour follows the same natural path, offering a clean, slightly spicy taste with a long, smooth finish.

The effect is deeply relaxing and physical, providing pronounced body calm and stress relief without overwhelming mental heaviness. Snow Ripper is designed for evening use, rest and recovery, embodying the character of a traditional, resin-rich Indica with modern stability and ease of cultivation.



SPITFIRE

FEMINIZED CLASSIC LINE

AFGHAN KUSH × PURPLE × MAZAR-I-SHARIF

SUMMARY TABLE

Genetics:	Afghan Kush × Purple × Mazar-i-Sharif
Type:	Feminized · Photoperiod
Hybrid:	Indica Dominant (75% – 25%)
THC:	21 – 24%
CBD:	<1%
Flowering Time (Indoor):	60 – 65 days
Harvest Time (Outdoor):	Early to Mid-October
Yield:	Indoor 550 – 650 g/m ² · Outdoor 750 g/plant
Height:	Medium (Indoor 100 – 130 cm) · Outdoor 2.0 m
Effect:	Physical · Relaxing · Calming · Pleasantly Sedative
Flavour:	Fruity · Dried Nuts · Pine Wood · Earthy
Aroma:	Subtle · Sweet · Woody · Nutty · Intoxicating
Resistance:	High
Terpene Profile:	Myrcene · Caryophyllene · Pinene
Cultivation Difficulty:	Easy
Best For:	Growers seeking a colourful, resinous Indica with rich aroma and a balanced, relaxing effect

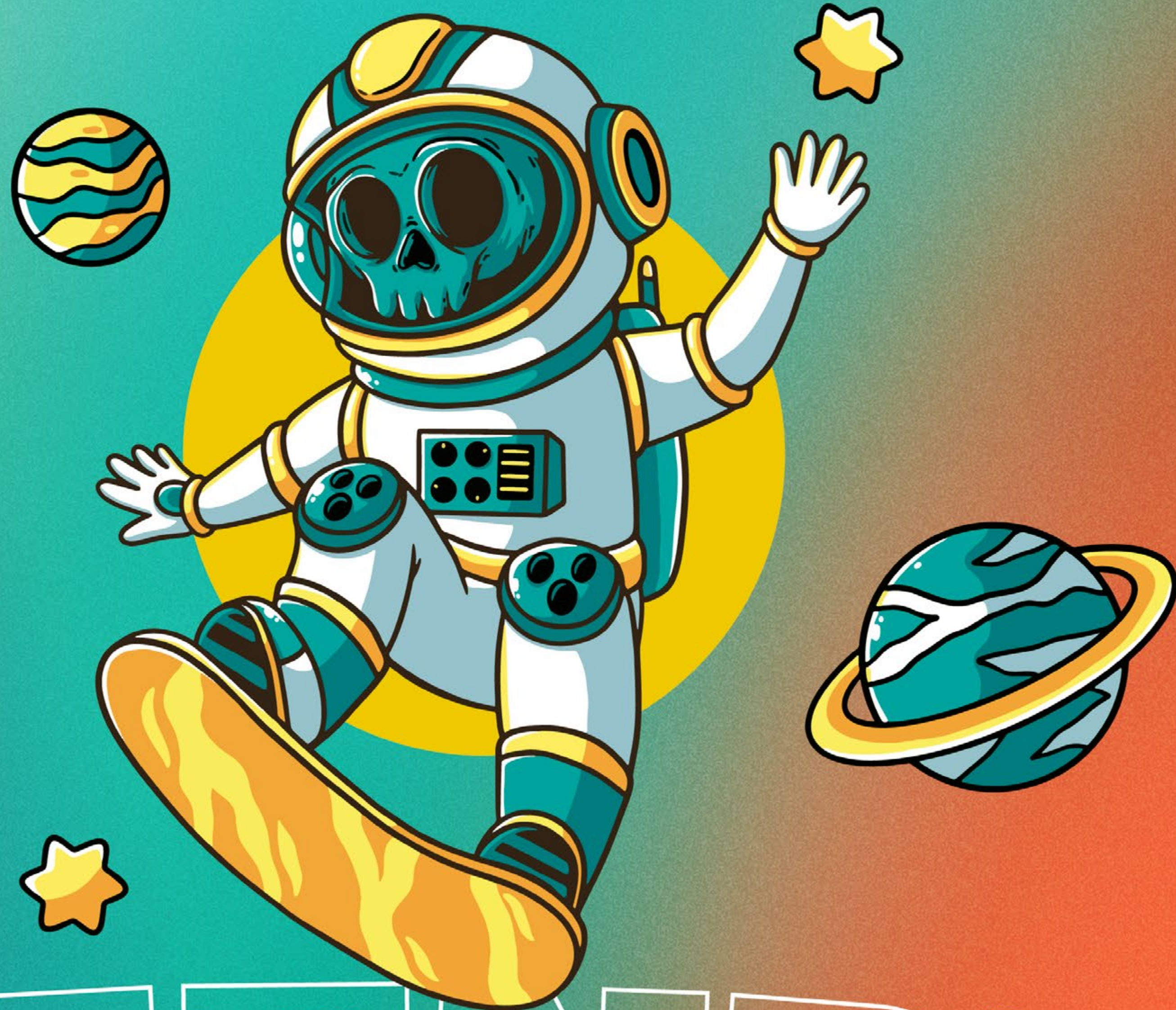
Spitfire is an Indica-dominant variety developed from a solid genetic foundation that combines the raw strength of Afghan Kush with the distinctive colour expression and aromatic depth of Purple and Mazar-i-Sharif. This lineage results in a robust, compact plant designed to deliver both visual character and reliable performance.

Structurally, Spitfire shows a strong central frame with thick stems and well-developed lateral branches, forming a dense and balanced architecture. Her growth rate is slightly slower than average for Indica-dominant varieties, allowing energy to be steadily directed toward flower formation. During flowering, the large fan leaves gradually shift from deep green to pronounced purple tones, intensifying as maturity approaches and giving the plant a striking, ornamental appearance.

Flowering indoors is completed in approximately 60–65 days, producing dense, heavy buds with an excellent resin coating. These compact flowers require good airflow and controlled humidity during the final stages, as their density reflects the variety's high production potential. Spitfire adapts well to both indoor and outdoor environments, showing natural resistance and consistent results across different conditions.

Aromatically, Spitfire offers a refined profile where sweet fruit notes blend with nuances of dried nuts, pine wood and earthy undertones. The effect is deeply physical and relaxing, accompanied by a calm and settled mental state. Spitfire stands as a variety defined by structure, colour and a balanced, soothing expression.

COLLECTOR'S ITEM ONLY.
NOT SUITABLE FOR HUMAN CONSUMPTION
OR AGRICULTURAL USE.
SALE TO MINORS IS PROHIBITED.
DISTRIBUTED BY ESB98728231



OLD FASHIONED