



ST - IN WEE ME

# GREENBUD

— SELECTED SEEDS —



*Inhale. Hold it. Share.*



NICE CHAP. NO GENERAL

## SMILE

NICE CHAP. NO GENERAL

# EARLY VERSION CLASSIC LINE



GREENBUD  
— SELECTED SEEDS —



GREENBUD  
— SELECTED SEEDS —

# PREMIUM

# CULTIVATING EXCELLENCE SINCE OUR BEGINNINGS

*Greenbud Seeds.* **Genetics you trust, cultivated with precision.**

**Founded in 2015, Greenbud Seeds is built upon a team of professionals and experienced growers with a long-standing background in the world of cannabis. From the very beginning, our work has followed a clear and consistent objective: to develop and offer high-quality feminized seeds through carefully controlled production and an unwavering commitment to excellence.**

All our production is carried out indoors in Europe, under strictly controlled conditions. Every stage of the process is monitored in detail—from light cycles and temperature to humidity and nutrition—ensuring the stability, vigor, and uniformity of each genetic line. Carefully selected mother plants are preserved and maintained to guarantee a solid, reliable, and consistent genetic foundation across all our batches.

Greenbud Seeds produces its seeds exclusively from elite cuttings, resulting in plants known for their strong performance, high productivity, and consistent behavior across different growing environments. Our catalogue brings together time-tested classic strains and exclusive new genetics developed through limited-edition crosses, aimed at growers seeking authentic flavours, potency, productivity, and distinctive character.

Each variety in our collection delivers resin-rich, aromatic, and highly productive

plants, with different indica and sativa dominances. Our genetics are available in Feminized, Autoflowering, Early Version, and Regular formats. Every line is selected according to strict quality criteria, following years of research focused on identifying specimens with exceptional hybrid vigor and refined organoleptic profiles.

Our seed selection process is meticulous and entirely manual. Germination tests consistently exceed a 95% success rate, ensuring that only the finest seeds reach our customers. We apply a highly reliable feminization process, guaranteeing an exceptionally high percentage of female plants when grown under proper conditions.

In 2025, to mark our 10th anniversary, we introduced a new packaging design developed to protect seeds from environmental fluctuations and to preserve their quality over time. In parallel, temperature- and humidity-controlled storage conditions ensure that each seed retains its full germination potential until the moment it reaches the grower.

Our commitment remains unchanged since day one: to provide exclusive, productive, and top-quality genetics, supported by rigorous work and the passion of a team that understands exactly what growers expect from a trusted seed bank.



*Inhale. Hold it. Share.*

**SMILE**



# BLACK IN BLACK

EARLY VERSION CLASSIC LINE

## BLACK IN BLACK × SECRET HYBRID

### SUMMARY TABLE

Genetics:	Black in Black x Secret Hybrid
Type:	Early Version · Classic Line
Hybrid:	Indica Dominant
THC:	20 %
CBD:	Low
Flowering Time (Indoor):	45–50 days
Harvest Time (Outdoor):	Early season
Yield:	Indoor 350–450 g/m <sup>2</sup> · Outdoor 600–700 g/plant
Height:	Medium
Effect:	Deep physical relaxation · Sedative · Long-lasting
Flavour:	Spicy · Earthy · Woody · Subtle fruity undertones
Aroma:	Forest soil · Old-school hash · Afghan notes
Resistance:	High resistance to pests and fungi
Terpene Profile:	Dominant Myrcene · Caryophyllene · Limonene · Pinene
Cultivation Difficulty:	Easy
Best For:	Evening use · Relaxation · Stress and sleep support

Black in Black Early Version is an indica-dominant hybrid developed to preserve the structural solidity, resin density and classic sensory profile of the original Black in Black, while offering a significantly earlier harvest window in outdoor cultivation. Based on a stable selection of pure Indica genetics, including Black Domina, this Early Version maintains the same compact morphology and predictable behaviour that define the Classic Line.

Plants develop with restrained vertical growth, broad dark green leaves and tight internodal spacing. Vigour is steady rather than aggressive, allowing for easy control in indoor spaces and excellent adaptation to outdoor environments with limited seasonal margins. Indoors, flowering is completed in 45–50 days, delivering dense, well-formed buds with a firm structure and abundant resin coverage. Outdoors, the early flowering behaviour enables harvest well ahead of standard photoperiod Indica varieties, reducing exposure to late-season humidity and fungal pressure. Natural resistance to pests and mould remains a defining trait.

The aromatic profile closely mirrors that of the feminized Black in Black, grounded in deep earthy and forest notes layered with warm spice and subtle fruity undertones. The terpene expression is dominated by myrcene and caryophyllene, supported by limonene and pinene, resulting in an unmistakably old-school Afghan hash character. The effect develops with a brief initial lift before transitioning into a profound and long-lasting physical relaxation. Sedative, calm and deeply grounding, it is best suited for evening use and for those seeking relief from stress or sleep-related discomfort.



*Inhale. Hold it. Share.*  
**SMILE**

# BLUE- BERRY 99

EARLY VERSION CLASSIC LINE

## BLUEBERRY × CINDERELLA 99 × SECRET HYBRID

### SUMMARY TABLE

Genetics:	Blueberry × Cinderella 99 × Secret Hybrid
Type:	Early Version · Classic Line
Hybrid:	Sativa Dominant (65 % Sativa – 35 % Indica)
THC:	19 – 22 %
CBD:	Low
Flowering Time (Indoor):	50 days
Harvest Time (Outdoor):	Early season
Yield:	Indoor 450 – 500 g/m <sup>2</sup> · Outdoor up to 600 g/plant
Height:	Medium
Effect:	Cerebral · Uplifting · Creative · Long-lasting
Flavour:	Sweet · Blueberry · Forest fruits · Pineapple · Light woody notes
Aroma:	Fruity · Fresh · Tropical · Forest undertones
Resistance:	High resistance to pests and humidity
Terpene Profile:	Myrcene · Pinene · Limonene
Cultivation Difficulty:	Easy
Best For:	Daytime use · Creative activity · Growers seeking classic Blueberry 99 character with a faster cycle

Blueberry 99 Early Version is a sativa-dominant hybrid developed from the original Blueberry 99 Classic Feminized, designed to retain its expressive aromatic profile, balanced structure and uplifting effect while significantly shortening the flowering cycle. Derived from the well-established cross of Blueberry and Cinderella 99, this Early Version maintains the recognisable character of the original variety in a more time-efficient photoperiod format.

Plants grow with medium height and a compact, well-balanced structure. A strong central stem and evenly developed lateral branches provide excellent support for dense, resin-coated buds. Internodal spacing remains controlled, allowing good airflow and ease of management indoors. Flowering is completed in approximately 50 days, offering a clear advantage for growers seeking faster indoor cycles. Outdoors, the early finish allows harvest ahead of standard photoperiod sativa-dominant varieties, improving reliability in temperate or humid climates. Natural resistance to pests and environmental stress remains consistent with the Classic Line.

Aromatically, Blueberry 99 Early Version faithfully reproduces the profile of the original. Sweet blueberry and forest fruit notes dominate, layered with fresh pineapple accents and subtle woody undertones. The terpene expression is led by myrcene, pinene and limonene, delivering a fresh, fruity and slightly resinous bouquet. The effect is clear, energetic and long-lasting, beginning with an uplifting cerebral stimulation that promotes creativity, focus and sociability, while remaining functional and balanced. It is particularly well suited for daytime use and social or creative activities.



Critical Early Version is an indica-dominant hybrid developed from a well-established genetic combination of Afghan lines and Skunk #1, refined to offer a significantly earlier flowering cycle while preserving the productivity, structure and balanced effect that define classic Critical-type varieties. This Early Version is designed for growers who value reliability, ease of cultivation and consistent yields within a shortened timeframe.

Plants grow with a compact, sturdy structure, characterised by short internodal spacing and strong lateral branching. The architecture is clearly oriented toward flower weight, allowing the plant to support large, dense buds heavily coated in resin. Vigor is robust but controlled, making the variety easy to manage indoors and well adapted to outdoor cultivation in both warm climates and northern regions. Flowering is completed in 45–50 days indoors. Outdoors, the early finish enables harvest ahead of seasonal weather risks, improving crop security in humid or short-summer environments.

The aromatic profile is rich and inviting, combining sweet and fruity notes with earthy undertones and a subtle but recognisable Skunk background. Terpene expression is dominated by myrcene and caryophyllene, supported by limonene and pinene, creating a rounded profile that balances depth with freshness. The effect is well balanced and long-lasting, beginning with a mild cerebral stimulation that adds clarity and uplift, before settling into a deep, relaxing body sensation. This makes Critical Early Version suitable for relaxation, stress relief and functional use without excessive heaviness.

# CRITICAL

EARLY VERSION CLASSIC LINE

## AFGHAN X SKUNK #1 × SELECTED HYBRID

### SUMMARY TABLE

Genetics:	Afghan × Skunk #1 × selected hybrid
Type:	Early Version · Classic Line
Hybrid:	Indica Dominant (70 % Indica – 30 % Sativa)
THC:	16 %
CBD:	Low
Flowering Time (Indoor):	45–50 days
Harvest Time (Outdoor):	Early season
Yield:	Indoor 400–550 g/m <sup>2</sup> · Outdoor up to 600 g/plant
Height:	Medium
Effect:	Balanced · Deep physical relaxation · Mild cerebral stimulation · Long-lasting
Flavour:	Sweet · Fruity · Earthy · Citrus and herbal accents · Skunk hints
Aroma:	Intense · Sweet-fruity · Earthy · Subtle Skunk
Resistance:	High adaptability to climate and cultivation conditions
Terpene Profile:	Dominant Myrcene · Caryophyllene · Limonene · Pinene
Cultivation Difficulty:	Easy
Best For:	Stress relief · Relaxation · Growers seeking fast, productive and reliable plants



*Inhale. Hold it. Share.*

**SMILE**

# GREEN- POWER XL

EARLY VERSION CLASSIC LINE

## GREENPOWER XL × SELECTED HYBRID

### SUMMARY TABLE

Genetics:	Greenpower XL × selected hybrid
Type:	Early Version · Classic Line
Hybrid:	Sativa Dominant (80 % Sativa – 20 % Indica)
THC:	20 – 23 %
CBD:	Low
Flowering Time (Indoor):	49–50 days
Harvest Time (Outdoor):	Early season
Yield:	Indoor 550–600 g/m <sup>2</sup> · Outdoor up to 900 g/plant
Height:	Tall
Effect:	Cerebral · Uplifting · Creative · Euphoric · Focused
Flavour:	Citrus · Spicy · Herbal · Earthy · Peppery
Aroma:	Fresh · Floral · Exotic · Spiced
Resistance:	High resistance to mould and common pests
Terpene Profile:	Dominant Terpinolene · Limonene · Caryophyllene
Cultivation Difficulty:	Easy to Moderate
Best For:	Daytime use · Creative activities · Growers seeking fast, high-yielding sativa expression

Greenpower XL Early Version is a sativa-dominant hybrid developed from the Classic Feminized Greenpower XL, designed to preserve its vigorous growth, high yield potential and energetic effect while offering a clearly reduced flowering time. Built upon powerful African sativa genetics and refined through a selected hybrid, this Early Version maintains the expansive structure and expressive character of the original in a faster, more adaptable photoperiod format.

Plants grow rapidly with strong apical development and long, well-supported branches. Internodal spacing is generous, allowing excellent light penetration and airflow throughout the canopy, which contributes to its natural resistance to mould and common pests. Indoors, flowering is completed in 49–50 days, delivering consistently high yields without compromising flower size or resin production. Outdoors, under optimal conditions and with sufficient space, plants can exceed 2.0 m in height and produce very large harvests, benefiting from an earlier finish compared to standard sativa-dominant photoperiod varieties.

The aromatic profile remains faithful to the original Greenpower XL. Citrus and spicy notes lead, supported by earthy and herbal undertones with subtle floral and peppery nuances. Terpene expression is dominated by terpinolene, with limonene and caryophyllene adding brightness and depth. The effect is intensely cerebral and uplifting, enhancing focus, creativity and mood while remaining clear and functional, without heaviness or anxiety. This makes Greenpower XL Early Version particularly suitable for daytime use, creative work and social or active settings.



*Inhale. Hold it. Share.*

**SMILE**



# JAW-BREAKER 47

EARLY VERSION CLASSIC LINE

## JAWBREAKER 47 × SELECTED HYBRID

### SUMMARY TABLE

Genetics:	Jawbreaker 47 × selected hybrid
Type:	Early Version · Classic Line
Hybrid:	Sativa Dominant
THC:	21%
CBD:	Low
Flowering Time (Indoor):	50–55 days
Harvest Time (Outdoor):	Early season
Yield:	Indoor 450–550 g/m <sup>2</sup> · Outdoor up to 700 g/plant
Height:	Medium
Effect:	Well balanced · Cerebral · Relaxing
Flavour:	Floral · Woody · Incense · Subtle citrus
Aroma:	Fresh · Herbal · Woody-spiced
Resistance:	High resistance to pests · Moderate to mould (ensure airflow indoors)
Terpene Profile:	Terpinolene · Pinene · Caryophyllene
Cultivation Difficulty:	Easy to Moderate
Best For:	Creative use · Balanced effects · Growers seeking speed and uniformity

Jawbreaker 47 Early Version is a fast-flowering, sativa-dominant hybrid developed from the original Jawbreaker 47, refined to shorten the flowering cycle while preserving its balanced structure, refined aromatic profile and versatile effect. Built upon the classic combination of Mexican Sativa and AK47 genetics, and stabilised through a selected hybrid, this Early Version maintains the identity of the original in a more time-efficient photoperiod format.

Plants grow to a medium height with a uniform and reliable structure. Internodal spacing is well balanced, supporting dense floral clusters and consistent bud development across the canopy. Vigour is steady and manageable, making the variety suitable for a wide range of cultivation styles. Indoors, flowering is completed in 50–55 days, delivering solid yields and dense, resin-rich flowers. Due to bud density, adequate airflow is recommended in warm or enclosed environments to minimise mould risk, while outdoor cultivation benefits from the earlier harvest window and strong resistance to pests.

The aromatic profile remains faithful to the original Jawbreaker 47. Fresh floral notes lead, layered over woody undertones, soft spice and subtle citrus accents. Terpene expression is dominated by terpinolene, pinene and caryophyllene, resulting in a clean, structured and well-defined bouquet. The effect is well balanced and long-lasting, combining a clear, uplifting cerebral stimulation with a gradual and relaxing physical sensation. This versatility makes Jawbreaker 47 Early Version suitable both for creative activities and for relaxed, controlled unwinding.



*Inhale. Hold it. Share.*  
**SMILE**

Lemon Pie Early Version is a sativa-dominant hybrid developed from the original Lemon Pie, refined to offer a faster flowering cycle while preserving its aromatic clarity, structural balance and distinctly cerebral effect. Built upon the classic pairing of Skunk #1 and Amnesia Haze, and stabilised through selected early-flowering genetics, this Early Version maintains the expressive citrus profile and functional energy of the original in a more time-efficient photoperiod format.

Plants grow with medium height and a well-balanced, elongated structure. Long, sturdy branches and an excellent calyx-to-leaf ratio support the formation of large, dense and resin-rich buds, simplifying maintenance and post-harvest work. Internodal spacing promotes good airflow, contributing to stable performance across indoor and outdoor environments. Flowering is completed in 50–55 days indoors, allowing for shorter cycles without compromising flower quality. Outdoors, the earlier finish improves reliability in climates where late-season humidity or cooler temperatures can pose a challenge.

The aromatic and flavour profile remains faithful to Lemon Pie's defining character. Intense lemon zest leads the expression, layered with smooth herbal notes, subtle spice and a light vegetal-resinous undertone. Terpene expression is dominated by limonene, supported by terpinolene and myrcene, resulting in a bright, fresh and persistent citrus-forward bouquet. The effect is balanced and long-lasting, delivering a clear, uplifting cerebral stimulation accompanied by mild physical relaxation. This makes Lemon Pie Early Version well suited for creative activities, daytime use and relaxed social settings.

# LEMON PIE

EARLY VERSION CLASSIC LINE

## LEMON PIE × SELECTED HYBRID

### SUMMARY TABLE

Genetics:	Lemon Pie × selected hybrid
Type:	Early Version · Classic Line
Hybrid:	Sativa Dominant
THC:	22 %
CBD:	Low
Flowering Time (Indoor):	50–55 days
Harvest Time (Outdoor):	Early season
Yield:	Indoor 450–500 g/m <sup>2</sup> · Outdoor over 550 g/plant
Height:	Medium
Effect:	Balanced · Cerebral · Uplifting · Mild physical relaxation
Flavour:	Fresh · Sweet citrus · Herbal · Light spice · Woody undertones
Aroma:	Lemon zest · Citrus peel · Herbal · Subtle resinous notes
Resistance:	Good resistance to mould and environmental stress
Terpene Profile:	Dominant Limonene · Terpinolene · Myrcene
Cultivation Difficulty:	Easy to Moderate
Best For:	Daytime use · Creative activities · Growers seeking citrus flavour with faster flowering



NL10 Early Version is an indica-dominant hybrid developed as a refined and more vigorous expression of the classic Northern Lights profile, adapted to deliver a faster flowering cycle without altering its deeply relaxing character. Built upon stable Northern Lights genetics and reinforced with a selected hybrid, this Early Version preserves the compact structure, resilience and sedative effect that have defined this lineage for decades.

Plants grow with a compact, bushy morphology, strong lateral branching and broad, dark green fan leaves. Internodal spacing is short, favouring the formation of thick central colas and dense, resin-heavy buds. Growth is robust yet controlled, making the variety well suited to indoor cultivation and highly reliable outdoors, particularly in warm Mediterranean climates. Flowering is completed in around 50 days indoors, allowing efficient production cycles. Outdoors, the early finish enables harvest before late-season stress, while maintaining high resistance to pests and common diseases.

The aromatic and flavour profile is smooth, rich and unmistakably classic. Sweet and earthy notes form the base, layered with subtle hints of natural honey, juniper and a light citrus accent that adds freshness without overpowering the profile. Terpene expression is dominated by myrcene, supported by caryophyllene and pinene, resulting in a calm, grounded and well-rounded sensory experience. The effect is deeply sedative and long-lasting, delivering full-body relaxation accompanied by mental calm and a gentle mood lift. NL10 Early Version is particularly suited for evening use and for those seeking relief from stress, insomnia or physical tension.

# NL10

EARLY VERSION CLASSIC LINE

## NORTHERN LIGHTS SELECTION × SELECTED HYBRID

### SUMMARY TABLE

Genetics:	Northern Lights selection × selected hybrid
Type:	Early Version · Classic Line
Hybrid:	Indica Dominant (90 % Indica – 10 % Sativa)
THC:	18 %
CBD:	Low
Flowering Time (Indoor):	50 days
Harvest Time (Outdoor):	Early season
Yield:	Indoor 400–550 g/m <sup>2</sup> · Outdoor up to 700 g/plant
Height:	Medium
Effect:	Full-body relaxation · Sedative · Long-lasting · Mental calm
Flavour:	Sweet · Earthy · Honey hints · Juniper · Light citrus
Aroma:	Earthy-sweet · Herbal · Subtle citrus freshness
Resistance:	High resistance to pests and diseases
Terpene Profile:	Dominant Myrcene · Caryophyllene · Pinene
Cultivation Difficulty:	Easy
Best For:	Evening use · Stress relief · Sleep support · Indica-focused growers

*Inhale. Hold it. Share.*

SMILE

# WHITE WIDOW X AK47

EARLY VERSION CLASSIC LINE

## AK47 x WHITE WIDOW x SELECTED HYBRID

### SUMMARY TABLE

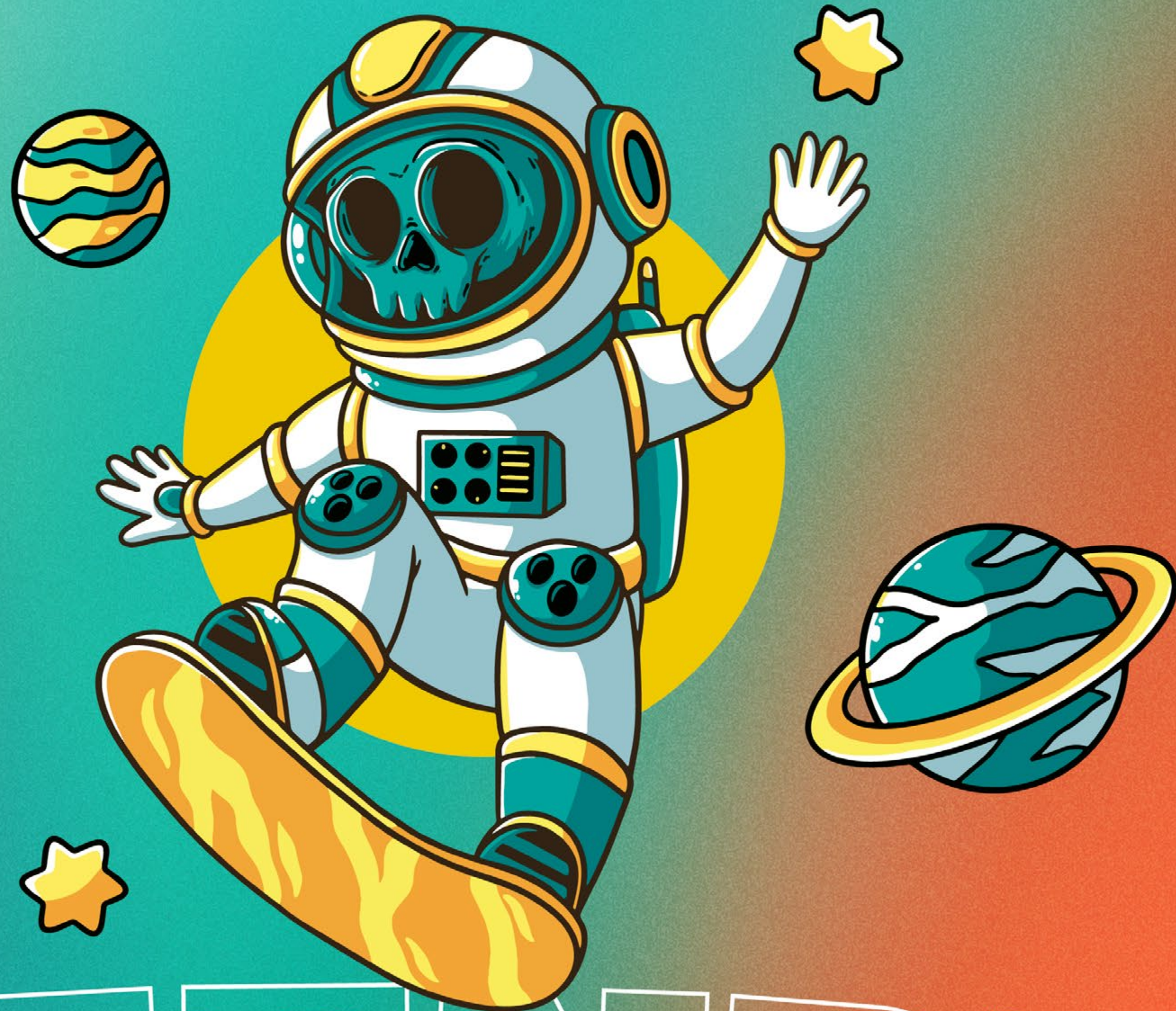
Genetics:	AK47 x White Widow x selected hybrid
Type:	Early Version · Classic Line
Hybrid:	Indica Dominant (70% Indica – 30% Sativa)
THC:	20%
CBD:	Low
Flowering Time (Indoor):	50 days
Harvest Time (Outdoor):	Early season
Yield:	Indoor 400–500 g/m <sup>2</sup> · Outdoor up to 600 g/plant
Height:	Medium
Effect:	Powerful · Euphoric · Balanced mind and body · Relaxing
Flavour:	Sweet · Earthy · Spicy · Citrus · Fresh hardwood · Hashy
Aroma:	Pungent · Sweet · Woody · Classic hash
Resistance:	High resistance to pests, mould and humidity
Terpene Profile:	Dominant Myrcene · Caryophyllene · Limonene
Cultivation Difficulty:	Easy
Best For:	Evening use · Resin production · Growers seeking speed, balance and classic flavour

White Widow x AK47 Early Version is an indica-dominant hybrid developed to combine the resin production and balance of White Widow with the potency and structural reliability of AK47, refined to deliver a clearly reduced flowering time. Stabilised with a selected hybrid, this Early Version preserves the classic character and broad-spectrum effect of its parent lines while offering faster and more efficient cultivation.

Plants grow with a compact, vigorous structure, supported by a solid central stem and strong lateral branches capable of carrying dense, trichome-rich flowers. Internodal spacing is tight, favouring uniform bud formation and high resin concentration. Indoors, flowering is completed in 50 days, allowing rapid production cycles with consistent results. Outdoors, plants remain manageable in size while delivering generous yields, benefiting from an early harvest window and strong natural resistance to pests, mould and humidity.

The aromatic profile is intense and traditionally rooted. Sweet and earthy tones form the base, layered with fresh hardwood notes reminiscent of classic hash, complemented by light spice and subtle citrus accents. Terpene expression is dominated by myrcene, with caryophyllene and limonene adding depth and brightness. The effect is powerful, long-lasting and well balanced, beginning with an uplifting cerebral euphoria before transitioning into deep physical relaxation. This balanced progression makes White Widow x AK47 Early Version suitable for evening use, stress relief and the easing of physical tension, while remaining controlled and functional.

COLLECTOR'S ITEM ONLY.  
NOT SUITABLE FOR HUMAN CONSUMPTION  
OR AGRICULTURAL USE.  
SALE TO MINORS IS PROHIBITED.  
DISTRIBUTED BY ESB98728231



OLD FASHIONED