



# GREENBUD

— SELECTED SEEDS —



*Inhale. Hold it. Share.*



NICE CHAP. NO GENERAL

## SMILE

NICE CHAP. NO GENERAL

# AUTO CLASSIC LINE



# DEFINITION

# CULTIVATING EXCELLENCE SINCE OUR BEGINNINGS

*Greenbud Seeds.* **Genetics you trust, cultivated with precision.**

**Founded in 2015, Greenbud Seeds is built upon a team of professionals and experienced growers with a long-standing background in the world of cannabis. From the very beginning, our work has followed a clear and consistent objective: to develop and offer high-quality feminized seeds through carefully controlled production and an unwavering commitment to excellence.**

All our production is carried out indoors in Europe, under strictly controlled conditions. Every stage of the process is monitored in detail—from light cycles and temperature to humidity and nutrition—ensuring the stability, vigor, and uniformity of each genetic line. Carefully selected mother plants are preserved and maintained to guarantee a solid, reliable, and consistent genetic foundation across all our batches.

Greenbud Seeds produces its seeds exclusively from elite cuttings, resulting in plants known for their strong performance, high productivity, and consistent behavior across different growing environments. Our catalogue brings together time-tested classic strains and exclusive new genetics developed through limited-edition crosses, aimed at growers seeking authentic flavours, potency, productivity, and distinctive character.

Each variety in our collection delivers resin-rich, aromatic, and highly productive

plants, with different indica and sativa dominances. Our genetics are available in Feminized, Autoflowering, Early Version, and Regular formats. Every line is selected according to strict quality criteria, following years of research focused on identifying specimens with exceptional hybrid vigor and refined organoleptic profiles.

Our seed selection process is meticulous and entirely manual. Germination tests consistently exceed a 95% success rate, ensuring that only the finest seeds reach our customers. We apply a highly reliable feminization process, guaranteeing an exceptionally high percentage of female plants when grown under proper conditions.

In 2025, to mark our 10th anniversary, we introduced a new packaging design developed to protect seeds from environmental fluctuations and to preserve their quality over time. In parallel, temperature- and humidity-controlled storage conditions ensure that each seed retains its full germination potential until the moment it reaches the grower.

Our commitment remains unchanged since day one: to provide exclusive, productive, and top-quality genetics, supported by rigorous work and the passion of a team that understands exactly what growers expect from a trusted seed bank.



A compact, robust and highly stable autoflowering hybrid that faithfully preserves the traditional Afghan character in a fast and accessible format. With a medium stature and a strong, bushy structure, the plant develops short internodes, broad dark-green leaves and thick, compact buds heavily coated in dense, aromatic resin. Its overall morphology reflects a clear Indica dominance, designed for consistency and ease of control throughout the entire life cycle.

As an autoflowering strain, its development is independent of photoperiod, allowing reliable cultivation under a wide range of conditions. Indoors, it maintains a uniform structure and adapts well to different substrates and lighting systems. Outdoors, under warm and stable climates, it can be cultivated successfully from early spring to late summer, making multiple harvests per season possible when conditions allow. Its natural resistance to pests, heat and moderate humidity makes it a dependable option for both novice growers and experienced cultivators seeking low-maintenance reliability.

The aromatic profile is rooted in classic Afghan and Skunk influences, combining earthy, pungent and sweet notes with subtle hints of citrus and fresh herbs. The effect begins with a clear, uplifting cerebral sensation that gradually evolves into a deep and lasting physical relaxation. Balanced and soothing, the experience reflects its unmistakable Indica heritage, offering calm, comfort and mental clarity without heaviness.

# AFGHAN STORM

AUTO CLASSIC LINE

## AFGHAN × SKUNK AUTO

### SUMMARY TABLE

Genetics:	Afghan × Skunk Auto
Type:	Feminized · Autoflowering · Classic Line
Hybrid:	Indica Dominant (75 % Indica – 25 % Sativa)
THC:	20 – 23 %
CBD:	Low < 1%
Life Cycle	(Seed to Harvest): 65 – 70 days
Yield:	Indoor 400 – 450 g/m <sup>2</sup> · Outdoor 70 – 120 g/plant
Height:	Indoor 70 – 100 cm · Outdoor 1.2 m
Effect:	Cerebral · Uplifting · Deeply Relaxing · Balanced
Flavour:	Skunky · Citrusy · Herbal · Earthy
Aroma:	Sweet · Fresh · Pungent · Classic Afghan
Resistance:	High to pests, heat and moderate humidity
Terpene Profile:	Myrcene, Caryophyllene, Limonene
Cultivation Difficulty:	Easy
Best For:	Growers seeking a classic, resin-rich Indica in a fast, stable autoflowering format



NICE CHAP, NO GENERAL **GREENBUD** NICE CHAP, NO GENERAL  
— SELECTED SEEDS —

Inhale. Hold it. Share.  
**SMILE**

GREENBUDSEEDS PRODUCTS

2026

SHOP AT GREENBUDSEEDS.COM

# BLACKOUT EXPRESS

AUTO CLASSIC LINE

## SATIVA-DOMINANT AUTO (THAI × SKUNK × C99)

### SUMMARY TABLE

Genetics:	Sativa-dominant Auto (Thai × Skunk × C99)
Type:	Feminized · Autoflowering · Classic Line
Hybrid:	Sativa Dominant (70 % Sativa – 30 % Indica)
THC:	21 – 24 %
CBD:	Low < 1%
Life Cycle	(Seed to Harvest): 70 – 75 days
Yield:	Indoor 500 – 550 g/m <sup>2</sup> · Outdoor 80 – 150 g/plant
Height:	Indoor 100 – 130 cm · Outdoor 1.5 m
Effect:	Powerful · Cerebral · Energizing · Uplifting
Flavour:	Fresh · Fruity · Spicy · Incense-like
Aroma:	Sweet · Tropical · Herbal · Lightly woody
Resistance:	High to heat and pests; humidity control recommended at end of cycle
Terpene Profile:	Terpinolene, Limonene, Caryophyllene
Cultivation Difficulty:	Easy to Moderate
Best For:	Growers seeking a tall, productive Sativa autoflowering strain with intense aroma and an energizing effect

A fast, vigorous and high-performing autoflowering strain distinguished by its clear Sativa dominance and its remarkable production capacity. The plant develops a strong and well-balanced structure, with numerous evenly spaced branches that elongate noticeably during flowering. This growth pattern results in an elegant, tall plant with excellent light penetration and a consistent distribution of dense, resin-coated buds.

Thanks to its autoflowering nature, its development is independent of photoperiod, allowing reliable cultivation indoors and outdoors throughout the year. Indoors, the use of medium-sized containers is recommended to help manage vertical growth and maintain structural balance. Outdoors, under warm and stable conditions, the plant reaches its full potential, delivering generous yields and a vigorous, expressive architecture. While naturally resistant to heat and pests, adequate airflow and humidity control during the final stages of flowering are advised to preserve bud quality.

The aromatic profile is fresh and expressive, dominated by fruity and sweet notes layered with hints of spice, incense and light herbal nuances. The effect is immediate and powerful, delivering a clear, uplifting cerebral stimulation that enhances focus and creativity. As the experience progresses, it gently settles into a calm, lucid relaxation, maintaining mental clarity without heaviness. AUTO BLACKOUT EXPRESS offers a true Sativa-driven experience in a fast and dependable automatic format.



# BUD MAKER

AUTO CLASSIC LINE

## JACK HERER AUTO

A vigorous and resin-focused autoflowering hybrid that preserves the unmistakable character of Jack Herer in a fast, reliable and highly productive format. The plant develops a strong and balanced structure, forming a dense canopy of active branches that support elongated, compact buds. From the early stages of flowering, the flowers are generously coated in large, bright trichomes, giving the plant a consistently resin-rich appearance throughout the cycle.

Its autoflowering nature allows cultivation without photoperiod dependency, ensuring stable performance in both indoor and outdoor environments. Indoors, it responds well to standard cultivation techniques and maintains an orderly structure with excellent bud distribution. Outdoors, under warm and stable conditions, it expresses its full aromatic and productive potential. Naturally resistant to pests and fungal issues, basic humidity control during the final flowering phase is recommended to preserve resin quality and terpene expression.

The aromatic profile is vibrant and expressive, combining fresh floral and fruity notes with a subtle spicy Haze background. On the palate, flavours unfold in layers, blending sweetness and gentle acidity with hints of citrus, tropical fruit and herbs, supported by a warm, spicy undertone. The effect is powerful and long-lasting, delivering an uplifting, euphoric cerebral stimulation that gradually integrates a smooth and pleasant physical relaxation. AUTO BUD MAKER offers a refined and potent experience, balancing energy, clarity and depth in an automatic format.

### SUMMARY TABLE

Genetics:	Jack Herer Auto
Type:	Feminized · Autoflowering · Classic Line
Hybrid:	Sativa Dominant (65 % Sativa – 35 % Indica)
THC:	22 – 25 %
CBD:	Low < 1%
Life Cycle	(Seed to Harvest): 70 – 75 days
Yield:	Indoor 500 – 600 g/m <sup>2</sup> · Outdoor 90 – 150 g/plant
Height:	Indoor 90 – 120 cm · Outdoor 1.4 m
Effect:	Uplifting · Cerebral · Euphoric · Relaxing
Flavour:	Fruity · Sweet · Spicy · Haze
Aroma:	Fresh · Floral · Citrus · Herbal
Resistance:	High to pests and fungal issues; humidity control recommended late in flowering
Terpene Profile:	Terpinolene, Limonene, Myrcene
Cultivation Difficulty:	Easy to Moderate
Best For:	Growers seeking a potent, aromatic autoflowering strain with classic Jack Herer character



# CAKE BOMB

AUTO CLASSIC LINE

## (GELATO × CHEESECAKE) × RUDERALIS INDICA

### SUMMARY TABLE

Genetics:	(Gelato × Cheesecake) × Ruderalis Indica
Type:	Feminized · Autoflowering
Hybrid:	Balanced Indica · Sativa (≈50% – 50%)
THC:	~20%
CBD:	Low < 1%
Life Cycle	(Seed to Harvest): ~60 – 65 days
Yield:	Indoor 400 – 500 g/m <sup>2</sup> · Outdoor 70 – 100 g/plant
Height:	Medium (Indoor 80 – 100 cm) · Outdoor up to 1.2 m
Effect:	Balanced · Cerebral · Physical · Relaxing · Creative
Flavour:	Sweet · Fruity · Vanilla · Cheese · Lemon · Earthy
Aroma:	Intense · Creamy · Spicy · Dessert-like
Resistance:	High to Pests and Temperature Fluctuations
Terpene Profile:	Dominant in Limonene, Caryophyllene and Myrcene
Cultivation Difficulty:	Easy
Best For:	Growers seeking an aromatic, colourful and resin-rich auto with a balanced and creative high

Auto Cake Bomb is a balanced Indica/Sativa autoflowering hybrid that combines structural strength, aromatic intensity and visual appeal in a fast and reliable format. The plant develops a compact yet vigorous structure, with solid branching capable of supporting large, dense and heavy buds. As flowering progresses, the flowers often display an attractive range of colours, shifting from bright green to deep purple tones, adding visual depth to its already expressive morphology.

Its autoflowering nature ensures a rapid and efficient life cycle, allowing consistent performance indoors and outdoors without photoperiod dependency. Indoors, it adapts particularly well to limited spaces, maintaining a manageable height and uniform structure. Outdoors, under warm and stable conditions, it completes its cycle quickly and can be cultivated in successive plantings throughout the season. Naturally resilient and low maintenance, AUTO CAKE BOMB offers dependable results for growers of all experience levels.

The aromatic profile is intense and distinctive, blending sweet and fruity notes with creamy undertones and subtle hints of vanilla, cheese, lemon and earth. The flavour is rich and layered, delivering a dessert-like experience with depth and persistence. The effect begins with a gentle cerebral uplift that enhances mood and creativity, gradually transitioning into a deep and pleasant physical relaxation. Well balanced and smooth, AUTO CAKE BOMB provides a long-lasting experience that remains joyful and composed throughout.



*Inhale. Hold it. Share.*

SMILE

An Indica-dominant autoflowering strain that faithfully reflects the structural and aromatic character of traditional Afghan genetics in a compact and dependable format. The plant develops a short, robust profile with thick stems and tight internodal spacing, forming dense and solid buds heavily coated in sticky resin. Its overall morphology is stable and uniform, clearly oriented toward resin production and structural consistency.

As an autoflowering variety, its development is independent of photoperiod, allowing reliable cultivation across different environments and growing systems. It performs consistently in soil, coco and hydroponic setups, maintaining controlled growth and a compact stature. Outdoors, under warm and stable conditions, it completes its cycle efficiently and can be cultivated in successive plantings throughout the season. Its natural resistance to pests and fungal issues makes it a low-maintenance option suitable for growers seeking dependable performance.

The aromatic profile is rich and traditional, dominated by sweet and earthy notes layered with floral and incense nuances that recall classic Afghan hashish. On the palate, the flavour is deep, smooth and persistent. The effect is intense and long-lasting, delivering a profound physical relaxation accompanied by a calm and settled mental state. True to its Indica heritage, EXPLODE AUTO offers a soothing, grounding experience that envelops both body and mind.

# EXPLODE

AUTO CLASSIC LINE

## MAZAR-E-SHARIF × CANADIAN RUDERALIS

### SUMMARY TABLE

Genetics:	Mazar-e-Sharif × Canadian Ruderalis
Type:	Feminized · Autoflowering · Classic Line
Hybrid:	Indica Dominant (80 % Indica – 20 % Sativa)
THC:	19 – 22 %
CBD:	Low < 1%
Life Cycle	(Seed to Harvest): 80 – 90 days
Yield:	Indoor 450 – 500 g/m <sup>2</sup> · Outdoor 100 – 130 g/plant
Height:	Indoor 60 – 80 cm · Outdoor 1.0 m
Effect:	Physical · Relaxing · Long-lasting · Calming
Flavour:	Sweet · Earthy · Floral · Incense
Aroma:	Hash-like · Spicy · Smooth · Old-school Afghan
Resistance:	High to pests and fungal issues
Terpene Profile:	Myrcene, Humulene, Caryophyllene
Cultivation Difficulty:	Easy
Best For:	Growers seeking a resin-rich Indica autoflowering strain with authentic Afghan flavour and long-lasting relaxation



*Inhale. Hold it. Share.*  
**SMILE**

# JAW- BREAKER 47

AUTO CLASSIC LINE

## JAWBREAKER 47 × RUDERALIS

### SUMMARY TABLE

Genetics:	Jawbreaker 47 × Ruderalis
Type:	Feminized · Autoflowering · Classic Line
Hybrid:	Balanced (55 % Indica – 45 % Sativa)
THC:	18 %
CBD:	Low < 1%
Life Cycle	(Seed to Harvest): 70 days
Yield:	Indoor 450 – 500 g/m <sup>2</sup> · Outdoor 60 – 90 g/plant
Height:	Indoor 80 – 100 cm · Outdoor 1.2 m
Effect:	Balanced · Cerebral · Physical · Relaxing
Flavour:	Sweet · Fruity · Floral · Spicy · Woody · Citrus
Aroma:	Intense · Fresh · Sweet · Lightly woody
Resistance:	High to pests and temperature variations
Terpene Profile:	Caryophyllene, Limonene, Myrcene
Cultivation Difficulty:	Easy
Best For:	Growers seeking the flavour and balance of Jawbreaker 47 in a fast, aromatic autoflowering strain

A balanced autoflowering hybrid that preserves the distinctive aromatic profile, resin production and composed potency of its feminized counterpart in a faster and more accessible format. The plant develops a compact yet vigorous structure, with medium internodal spacing and broad, healthy foliage that supports an abundant and dense flowering phase. The buds form solid clusters, generously covered with bright, resinous trichomes from early flowering through harvest.

Its autoflowering nature allows a complete and efficient independent of photoperiod, delivering consistent results indoors and outdoors. It performs reliably under stable conditions and shows strong adaptability to different substrates and lighting systems. With controlled growth and uniform development, it is easy to manage while maintaining high productivity and aromatic intensity. Its strong resin output makes it particularly suitable for growers interested in extractions and high-quality aromatic profiles.

The flavour profile is complex and well-defined, combining sweet and fruity notes with floral, spicy and lightly woody undertones, finished by a subtle citrus freshness. The effect is balanced and versatile, offering an initial cerebral stimulation that enhances mood and focus, followed by a smooth and pleasant physical relaxation. JAWBREAKER 47 AUTO delivers a refined, harmonious experience, maintaining flavour depth and resin quality in a reliable autoflowering format.



*Inhale. Hold it. Share.*

**SMILE**

# LEMON PIE

AUTO CLASSIC LINE

## LEMON PIE × RUDERALIS

### SUMMARY TABLE

Genetics:	Lemon Pie × Ruderalis
Type:	Feminized · Autoflowering · Classic Line
Hybrid:	Balanced (50 % Indica – 50 % Sativa)
THC:	20 – 22 %
CBD:	Low < 1%
Life Cycle	(Seed to Harvest): 65 – 70 days
Yield:	Indoor 500 – 550 g/m <sup>2</sup> · Outdoor 70 – 120 g/plant
Height:	Indoor 70 – 100 cm · Outdoor 1.2 m
Effect:	Relaxing · Cerebral · Uplifting · Balanced
Flavour:	Lemon · Lime · Haze · Sweet · Metallic
Aroma:	Intense · Citric · Fresh · Tangy
Resistance:	High to pests and temperature fluctuations
Terpene Profile:	Limonene, Terpinolene, Caryophyllene
Cultivation Difficulty:	Easy
Best For:	Growers seeking a highly aromatic, resin-rich autoflowering strain with a fresh and balanced effect

A balanced autoflowering hybrid that translates the intense aromatic identity and resin production of Lemon Pie into a fast, stable and highly accessible format. The plant develops a compact yet well-branched structure, reaching a medium height and supporting dense, heavy buds generously coated in thick layers of sticky trichomes. Its morphology remains uniform and manageable, clearly oriented toward resin yield and aromatic expression.

Its autoflowering nature ensures a reliable independent of photoperiod, allowing consistent cultivation indoors and outdoors. Indoors, it performs with notable efficiency, delivering high yields under stable conditions while maintaining controlled growth. Outdoors, under warm and moderate climates, it completes its cycle smoothly and adapts well to different growing environments. Naturally resistant to pests and temperature fluctuations, LEMON PIE AUTO is an easy-to-manage option suitable for a wide range of growers.

The aromatic profile is sharp and expressive, dominated by intense lemon and lime notes layered with Haze-inspired nuances and a subtle metallic edge. The flavour is vivid and long-lasting, offering a fresh, citric experience with depth and clarity. The effect is immediate and balanced, beginning with a calming physical relaxation that gradually gives way to an uplifting cerebral stimulation marked by energy and mental clarity. Refreshing and versatile, LEMON PIE AUTO delivers a sensory experience defined by freshness, precision and aromatic intensity.



*Inhale. Hold it. Share.*  
**SMILE**

An Indica-dominant autoflowering hybrid that combines structural solidity, high productivity and a deeply calming effect profile. The plant develops a strong, columnar structure with a well-balanced and symmetrical canopy, forming a dominant central cola accompanied by compact lateral buds. Throughout flowering, the flowers become dense and heavily coated in resin, reflecting a clear orientation toward yield and therapeutic consistency.

Its autoflowering nature allows reliable cultivation without photoperiod dependency, performing consistently in both indoor and outdoor environments. Indoors, it responds well to controlled container sizes, maintaining an orderly structure and efficient use of space. Outdoors, under favourable and stable conditions, it expresses notable vigour and completes its cycle with uniform development. Naturally resistant to pests and humidity, POLAR EXPRESS AUTO offers dependable results with minimal maintenance, making it suitable for a wide range of growers.

The aromatic profile is intense and inviting, dominated by sweet and tropical notes with clear impressions of pineapple, mango and tangerine, supported by a smooth, creamy base. The flavour mirrors this bouquet, delivering an exotic sweetness balanced by a subtle earthy undertone. The effect is deeply relaxing and soothing, providing both physical comfort and mental calm. Gentle yet effective, POLAR EXPRESS AUTO is particularly well suited for moments of rest, evening use or therapeutic contexts where tranquillity and relief are desired.

# POLAR EXPRESS

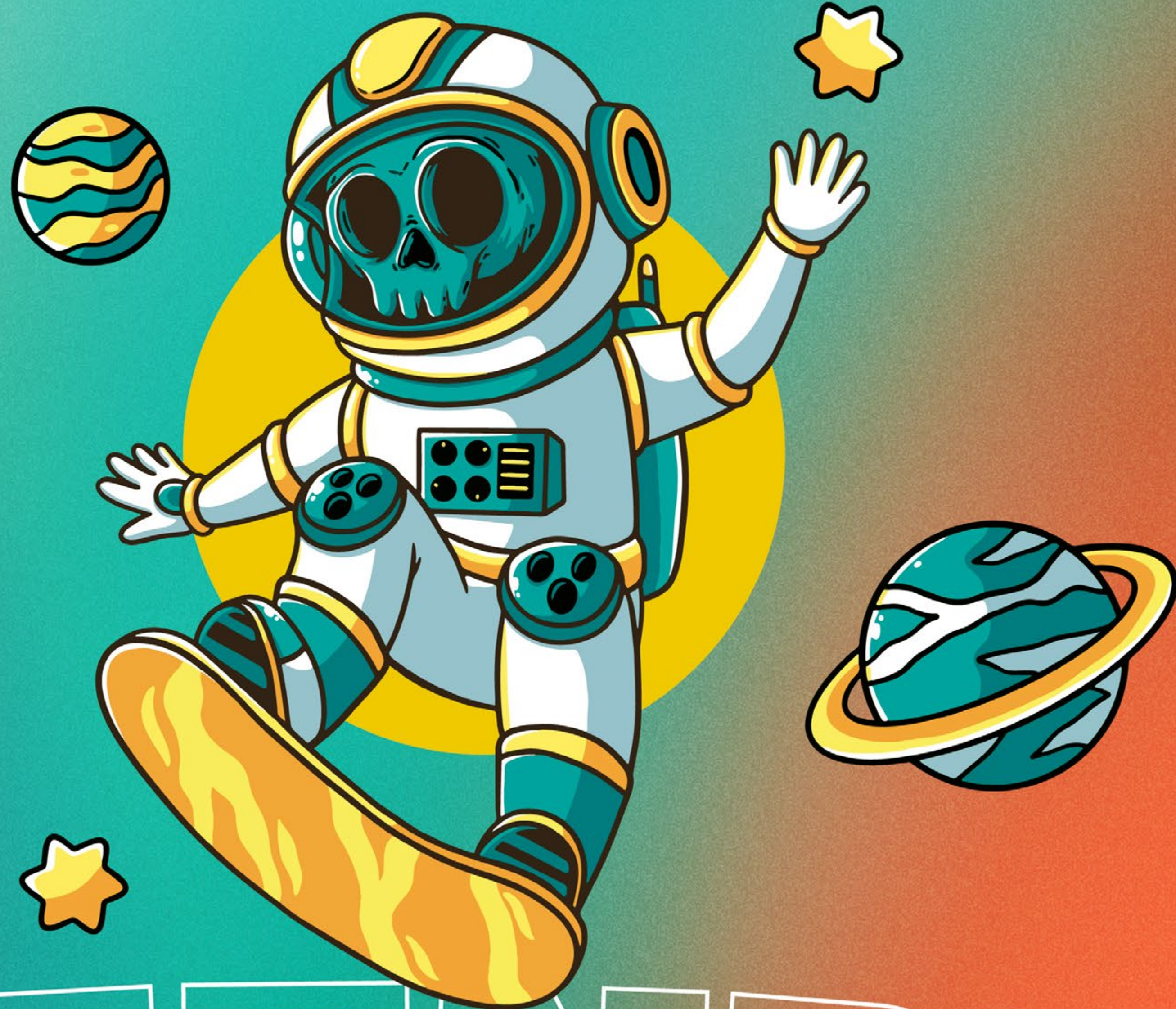
AUTO CLASSIC LINE

## NORTHERN LIGHTS × BIG BUD × RUDERALIS

### SUMMARY TABLE

Genetics:	Northern Lights × Big Bud × Ruderalis
Type:	Feminized · Autoflowering · Classic Line
Hybrid:	Indica Dominant (70 % Indica – 30 % Sativa)
THC:	18 – 20 %
CBD:	Medium (1%)
Life Cycle	(Seed to Harvest): 70 – 75 days
Yield:	Indoor 550 – 600 g/m <sup>2</sup> · Outdoor 80 – 130 g/plant
Height:	Indoor 100 – 130 cm · Outdoor 1.75 m
Effect:	Relaxing · Physical · Calming · Therapeutic
Flavour:	Sweet · Fruity · Pineapple · Mango · Tangerine · Earthy
Aroma:	Tropical · Intense · Creamy · Fresh
Resistance:	High to pests and humidity
Terpene Profile:	Myrcene, Limonene, Humulene
Cultivation Difficulty:	Easy
Best For:	Growers seeking a high-yielding, calming Indica autoflowering strain with a tropical aromatic profile

COLLECTOR'S ITEM ONLY.  
NOT SUITABLE FOR HUMAN CONSUMPTION  
OR AGRICULTURAL USE.  
SALE TO MINORS IS PROHIBITED.  
DISTRIBUTED BY ESB98728231



OLD FASHIONED