

[WWW.GREENBUDSEEDS.COM](http://WWW.GREENBUDSEEDS.COM)

# Greenbud selected seeds

WELCOME TO THE COLECTORS' SEEDS PARADISE



LET'S GO



**GREENBUD**  
— SELECTED SEEDS —



**Welcome to the brand  
new collection of  
Greenbud seeds. Don't miss  
this limited editions**

**GREEN  
BUD**



Selected  
Seeds





**In Greenbud Seeds we are a team of professionals from different parts of the world** with a long experience in selecting unique genetics. Our know-how led us to join efforts with the aim of marketing a line of high quality collection seeds which will meet the needs of any grower, from beginners who are looking for easy to grow inexpensive strains without sacrificing exceptional flavours, to the experienced and more demanding growers who want to work with the most exclusive strains in terms of aroma, yield, potency and quality.

In Greenbud Seeds you will find high yielding strains of **amazing qualities, flavours and aromas**. Whether you are looking for a Sativa, Indica or autoflowering strain with Rudelaris genetics, all of them have been grown following the highest standards, achieved after many years of research to find the perfect individuals which provide high hybrid

vigour and outstanding qualities. Our strains are hand selected, inspected thoroughly and subjected to a germination test that assures only collection seeds of the highest quality are put on the market with germination rates over 95%. Our seeds are wrapped in the most rugged packaging on the market in order to protect them from possible environmental changes. The conservation method under low temperature and humidity conditions guarantees that our seeds germinating power is well preserved.

**Greenbud seeds quality commitment to customers therefore relies on an exclusive quality high-yielding genetics** for collection full of sensational resinous flavours and aromas, as well as the use of organic fertilizers and a natural feminization process which guarantees you will get female plants almost up to 100% under the right growing conditions.

FEMINIZED

(\*) Available also in Early Version.

## **BLACK IN BLACK** **BLACK DOMINA X BLACK DOMINA**

Seed type: Feminized  
Hybrid: Indica

FLOWERING TIME: 55-60 DAYS

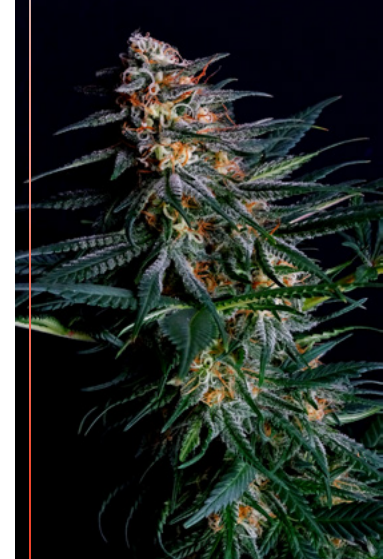
YIELD: 350-450 G/M2 INDOOR - 700-800 G/PLANT OUTDOOR

EFFECT: RELAXING

FLAVOUR: FRUITY / SWEET / SPICY / EARTHY AND WOODSY NOTES

THC: 20%

"Besides her high yield she's remarkable for her fast growth, dark green fan-shaped big leaves and resistance to plagues and fungus, as well as her delicious spicy and fruity flavour full of earthy virgin forest notes in the purest old school fashion..."



(\*) Available also in Regular and Early Version

FEMINIZED

## **LEMON PIE** **SKUNK #1 X AMNESIA HAZE X SECRET HYBRID**

Seed type: Feminized  
Hybrid: Sativa / Indica

FLOWERING TIME: 65-70 DAYS

YIELD: 500 G/M2 INDOOR - 600 G/PLANT OUTDOOR

EFFECT: STIMULATING / CEREBRAL

FLAVOUR: BITTERSWEET / HAZE / INTENSE LEMON

THC: 22 %

"Lemon Pie is a high-quality Skunk #1 and Amnesia Haze hybrid, remarkable for her sweet pleasant lemon scent and her fresh haze flavour. Regardless of her Sativa dominant it has a 9-10 weeks flowering cycle and a yield of 500 g/m2 per plant indoors and an average of 600 g outdoor..."





(\*) Available also in Early Version.

### **JAWBREAKER 47** **MEXICAN SATIVA X AK47**

Seed type: Feminized

Hybrid: 60% Sativa / 40% Indica

HARVEST: 55-65 DAYS

YIELD: 450-550 G/M2 INDOOR - 800-1000 G/PLANT OUTDOOR

EFFECT: WELL-BALANCED CEREBRAL AND RELAXING

FLAVOUR: FLORAL, WOOD, INCENSE

THC: 21 %

**“A medium height plant with a potent Sativa dominant and incomparable flavour, a crossing of legendary strains mixing the most refined Sativa genetics in a latest-generation hybrid. She is steady, reliable and easy to grow. Her strengths are her relatively short flowering time, homogeneity, speed, density, compact height and her truly high yield...”**

(\*) Available also in Early Version.

### **BLUEBERRY 99** **CINDERELLA 99 X BLUEBERRY**

Seed type: Feminized

Sex: Sativa dominant

HARVEST: 50-60 DAYS

YIELD: 450-550 G/M2 INDOOR - 700 G/PLANT OUTDOOR

EFFECT: CEREBRAL, PSYCHO-ACTIVE

FLAVOUR: FRUITY, SWEET, PINEAPPLE, WOOD

THC: 21 %

**“A spectacular strain born from a crossing of legendary genetics in which the Blueberry phenotype provides that particular blue colour to leaves and buds, given the optimal growing conditions. Her distinctive aroma is sweet and fruity with a delicate pineapple scent and fresh wood, blueberry and wild berry notes.”**

FEMINIZED

**GREENBUD**  
— SELECTED SEEDS —

(\*) Available also in Regular

## **SNOW RIPPER** **SECRET HYBRID X GINGER-ALE X AFGHANI**

Seed type: Feminized (\*)

Hybrid: Indica dominant

HARVEST: 50-60 DAYS

YIELD: 300-450 G/M2 INDOOR - 600 G/PLANT OUTDOOR

EFFECT: RELAXING, SEDATING

FLAVOUR: FLORAL, WOOD, EARTHY

THC: 22 %

“Snow Ripper is an amazing aromatic wonder. She has an original, intense and fresh green forest flavour mixed with spice and earthy wood hints reminiscent of cold damp forests and winter rain. A delicate sight for sore eyes and for the most picky connoisseurs...”



(\*) Available also in Early Version.

FEMINIZED

## **GREEN POWER XL** **AFRICA X SECRET HYBRID**

Seed type: Feminized

Hybrid: Sativa adominant

HARVEST: 50-60 DAYS

YIELD: 550 G/M2 INDOOR - 800 G/PLANT OUTDOOR

EFFECT: STIMULATING, CEREBRAL

FLAVOUR: SWEET, EARTHY, LICORICE

THC: 22 %

“Green Power XL has a hard-hitting psychoactive stimulating effect and stands out for her pungent scent once harvested and dried, as well as for the intensity, freshness and originality of her flavour, with hints of earth and licorice.”



## **PURPLE LOVELESS** **LOVELESS X PURPLE SKUNK**

Seed type: Feminized  
Hybrid: Indica / Sativa.

FLOWERING TIME: 60 DAYS.

YIELD: INDOOR 400-450 G/M2 - 550-600 G/PLANT OUTDOOR

EFFECT: STRONG / INTENSE / EUPHORIC / RELAXING

FLAVOUR: FRUITY / EARTHY / SKUNK / PUNGENT / CITRIC HINTS

THC: +23%

“A plant of average height, suitable for both indoor and outdoor gardens, an easy to grow, high-yielding, sturdy plant with quite a fast flowering cycle. She has an excellent calyx to leaf ratio and a remarkable yielding of compact, sticky thick buds oozing with resin, acquiring a blue and dark purple hue by the end of the flowering cycle...”

## **SPITFIRE** **(PURPLE X AFGHAN KUSH) X MAZAR**

Seed type: Feminized  
Sex: Indica dominant.

FLOWERING TIME: 65 DAYS.

YIELD: INDOOR 450-500 G/M2 - 500-600 G/PLANT OUTDOOR

EFFECT: RELAXING / PHYSICAL / NARCOTIC

FLAVOUR: SWEET / FRUITY / PINE AND HINTS OF DRIED NUTS

THC: 20-22%

“Spitfire stands out for her thick, hard, resinous buds. Resistant and easy to grow, she will have excellent results in both outdoor and indoor gardens. Her aroma is unique and absolutely intoxicating, subtle and fruity, full of notes reminiscent of dried nuts and pine hardwood.”

Skywalker OG's potency and flavour combine in this impressive and delicious plant characterized by her elegant, fresh, deep aroma as well as by her intense sweet, spicy flavour with subtle lemon citric touches and woody notes which will carry you to a new world full of pleasant feelings. A plant for refined palates with a potent, lasting physical and relaxing effect. Give her your love and she will give it back to you in full.

FEMINIZED

# LOVELESS

SKYWALKER OG X SECRET HYBRID

Seed type: Feminized

Hybrid: Indica dominant

FLOWERING TIME: 60-65 DAYS

YIELD: INDOOR 400-500 G/M2 - 500-600 G/PLANT OUTDOOR

EFFECT: STRONG / WELL BALANCED / RELAXING

FLAVOUR: SWEET / FRUITY / KUSH / CITRIC HINTS

THC: +22%

(\*) Available also in Regular





**Black Gold** is an elegant, sturdy, easy to grow breed that can reach a considerable height during her vegetative stage, with a flowering period of about nine weeks. She is characterized by deep orange and tangerine aromas with earthy touches of incense and hardwood, as well as an inherently Sativa effect, which is well-balanced, strong and playful; both creative and relaxing. This aromatic marvel that will take you to a world full of exotic flavours is undoubtedly ideal for the most discerning growers.

FEMINIZED

# BLACK GOLD

**KOSHER KUSH X (CALIFORNIA ORANGE X SKUNK)  
X BLACK IN BLACK**

Seed type: Feminized

Hybrid: Indica dominant

FLOWERING TIME: 65 DAYS

YIELD: INDOOR 500 G/M2 - 600 G/PLANT OUTDOOR

EFFECT: STRONG / WELL BALANCED / STIMULATING / RELAXING

FLAVOUR: FRUITY, SWEET , TANGERINE / HARDWOOD,

INCENSE AND HASH HINTS

THC: 22-24%





Her flavour is deep and very intense, a sweet mix of tropical fruits, herbal, earthy and musky hints, with citric, lavender and pine overtones. With a powerful and long lasting effect, along with happiness, euphoria and relaxation the strain can produce drowsiness so it is recommended to consume her moderately. Sweet and delicious, she will hit and transport you immediately to your favourite heaven.

FEMINIZED

# MAKAHA

(HAWAII X PURPLE SKUNK) X DO-SI-DOS

Seed type: Feminized

Hybrid: Indica dominant (70% - 30%)

FLOWERING TIME: 60-65 DAYS

YIELD: HIGH 550-600 G/M2 INDOOR - 700 G/PLANT OUTDOOR

EFFECT: EUPHORIC / RELAXING / SEDATIVE / SOOTHING

FLAVOUR: FRESH / SWEET / FRUITY / PINE / HERBAL AND LAVENDER

THC: 22-25%

(\*) Available also in Regular



A high-yielding plant, characterized by the richness, uniqueness and depth of her organoleptic properties and her well-balanced effect, in which we have combined our fabulous Black Gold and one of the most potent breeds right now in the market, the amazing GG#4 x Zkittlez. The aroma is very characteristic with a unique combination of flavours, mostly sweet, fruity with intense orange touches and earthy with spicy hints and cocoa and coffee notes. Gold wave is a treat for the eyes, a true wonder of the nature that we want to share with you.

FEMINIZED

# GOLD WAVE

BLACK GOLD X (GG#4 X ZKITTLEZ)

Seed type: Feminized

Sex: Indica dominant

FLOWERING TIME: 60-65 DAYS

YIELD: INDOOR 550-600 G/M2 / 800 G/PLANT OUTDOOR

EFFECT: STRONG/WELL BALANCED/STIMULATING/RELAXING-PHYSICAL

FLAVOUR: SWEET/ FRUITY / ORANGE / KUSH, SPICY AND COCOA NOTES

THC: 22%



She's a highly resistant plant, suitable for both indoors and outdoors gardens, and she stands out for an abundant yield of compact buds fully coated with resin. She is remarkable for her special organoleptic qualities, her intense Kush aroma and flavor, African Madagascar's cocoa with its classic notes: earthy, dry and of course sugar-free. Choco Candy has a background full of subtle hash, woody and mentholated notes.

FEMINIZED

# CHOCO CANDY

CHOCOLOPE X AFGHAN KUSH

Seed type: Feminized

Hybrid: 60% sativa 40% indica

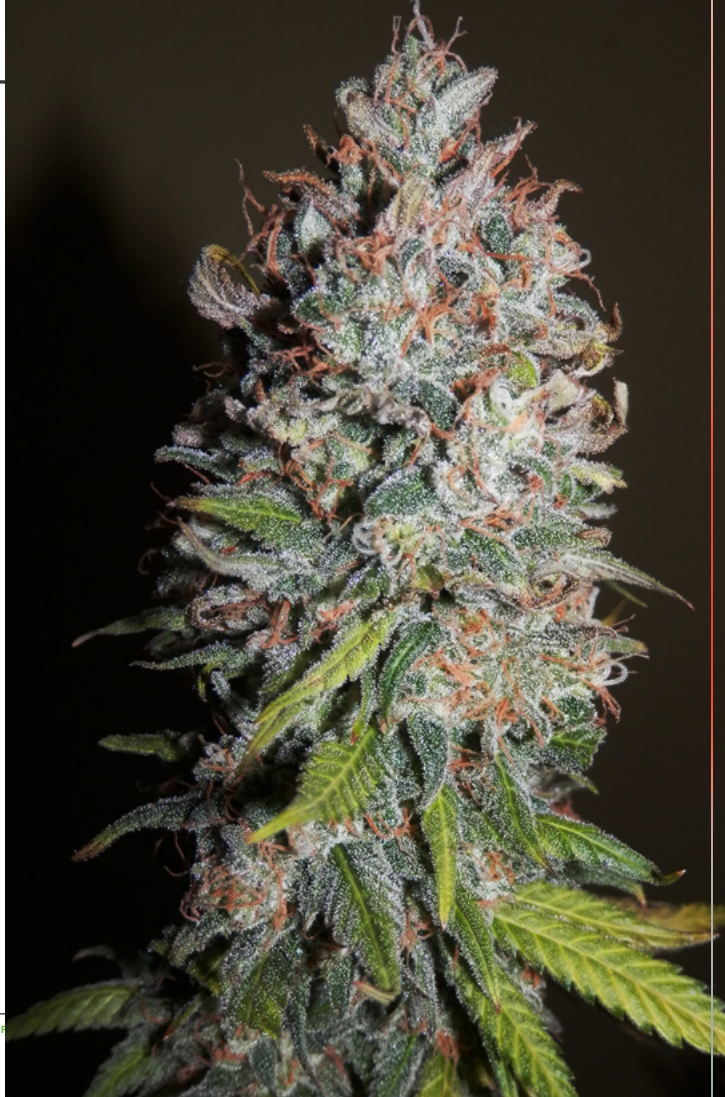
FLOWERING TIME: 60 DAYS / OUTDOORS (EARLY OCTOBER)

YIELD: INDOOR 550-650 G/M2 - 500-600 G/PLANT OUTDOOR

EFFECT: POWERFUL, WELL-BALANCED, CEREBRAL, PHYSICAL

FLAVOUR: KUSH / COCOA / HASH WITH FRESH HARDWOOD NOTES

THC: 22%





### **BLACKOUT EXPRESS AUTO** **THAI X SKUNK X C99 X RUDERALIS**

Seed type: Autoflowering, feminized  
Hybrid : Sativa / Indica

HARVEST: 65 DAYS SEED TO HARVEST  
YIELD: 550-600 G/M2 INDOOR – 100-125 G/PLANT OUTDOOR  
EFFECT: CEREBRAL, ENERGIZING  
FLAVOUR: SWEET, INCENSE, FLORAL  
THC: 14%

**“If you’re looking for flavour and aroma that is fresh and fruity with touches of incense and spices, Blackout Express is definitely a good choice. Her effect is totally hard-hitting, cerebral and energizing...”**

### **POLAR EXPRESS AUTO** **NORTHERN LIGHT X BIG BUD X RUDERALIS**

Seed type: Feminized  
Sex: Sativa dominant

HARVEST: 65-75 DAYS SEED TO HARVEST  
YIELD: 450-600 G/M2 INDOOR – 70-100 G/PLANT OUTDOOR  
EFFECT: RELAXING  
FLAVOUR: SWEET, PINEAPPLE, MANGO  
THC: 15%

**“Polar Express can produce yields of 600g/m2 indoors, with large compact buds dripping with a white ocean of delicious resin. She stands out for her intense sweet fruity aroma with hints of pineapple, mango and tangerine...”**

## AFGHAN STORM AUTO SKUNK #1 X HASH PLANT X RUDERALIS

Seed type: Autoflowering, feminized  
Hybrid : Mainly Indica

HARVEST: 65-75 DAYS FROM SEED TO HARVEST  
YIELD: 500-600 G/M2 INDOOR – 70-100 G/PLANT OUTDOOR  
EFFECT: RELAXING, NARCOTIC  
FLAVOUR: SWEET, SKUNK, CITRIC  
THC: 12%

**“A delicious, reliable, stable and highly resistant plant of average height, compact and leafy, with a good growth pattern. She produces delicious aromatic buds thick with resin, providing an intense flavour and a scent full of light citric hints and a Skunk base...”**



## BUDMAKER AUTO HAZE X NORTHERN LIGHTS X SHIVA SKUNK X RUDERALIS

Seed type: Autoflowering, feminized  
Hybrid : Sativa/Indica

HARVEST: 65 DAYS FROM SEED TO HARVEST  
YIELD: 350-400 G/M2 INDOOR – 60-75 G/PLANT OUTDOOR  
EFFECT: EUPHORIC, CEREBRAL  
FLAVOUR: SWEET, HAZE  
THC: 14%

**“Her flavour is a true wonder for its complexity, with a fruity fresh aromatic base full of notes that will burst on your tongue to sweeten the spicy aroma of Haze. A feast of the senses for one of the most powerful autoflowering seeds in our catalogue and on the market...”**





### **EXPLODE AUTO** **SKUNK #1 X MAZAR-I-SHARIF X RUDERALIS INDICA**

Seed type: autoflowering, feminized  
Hybrid : Indica

HARVEST: 80-90 DAYS FROM SEED TO HARVEST  
YIELD: 450-600 G/M2 INDOOR – 50-120 G/PLANT OUTDOOR  
EFFECT: PHYSICAL, RELAXING  
FLAVOUR: INCENSE, EARTHY, FLORAL  
THC: 15%

“She is so easy to grow that a plentiful yield is guaranteed even for those new to growing our well-loved plant. Her mental and physical effects are long lasting and intense. Old School flavour, sweet and smooth, rich in nuances with a pungent earthy aroma of incense and flowers...”

### **LEMON PIE AUTO** **HAZE X SKUNK #1 X RUDERALIS INDICA**

Seed type: autoflowering, feminized  
Hybrid : Indica

HARVEST: 65-75 DAYS FROM SEED TO HARVEST  
YIELD: 400-550 G/M2 INDOOR – 50-100 G/PLANT OUTDOOR  
EFFECT: PHYSICAL, CEREBRAL, BODILY  
FLAVOUR: INCENSE, METALLIC, CITRIC TOUCHES, LEMON  
THC: 15%

“She is truly rich in nuances, both in smell and flavour - metallic, Haze, with lime and lemon citric touches that make smoking this weed a pleasant, unforgettable experience. This is a compact sized, multi-branched strain of average height that can grow up to 70-100 cm high...”

## JAWBREAKER 47 AUTO (MEXICAN SATIVA X AK47) X RUDELARIS

Seed type: autoflowering, feminized  
Hybrid: 60% Sativa / 40% Indica

HARVEST: 70 DAYS FROM SEED TO HARVEST  
YIELD: 500 G/M2 INDOOR – 60-90 G/PLANT OUTDOOR  
EFFECT: WELL-BALANCED CEREBRAL AND PHYSICAL, RELAXING  
FLAVOUR: SWEET / FRUITY / FLORAL HINTS / SPICY  
THC: 18 %

“Shows a dense and plentiful flowering flooded with trichomes and she works at full capacity in both indoors and outdoors gardens. Her flavour is unmistakably intense, a singular combination of fresh floral notes, hardwood and spices with a subtle citric hint. A perfect plant for recreational use...”

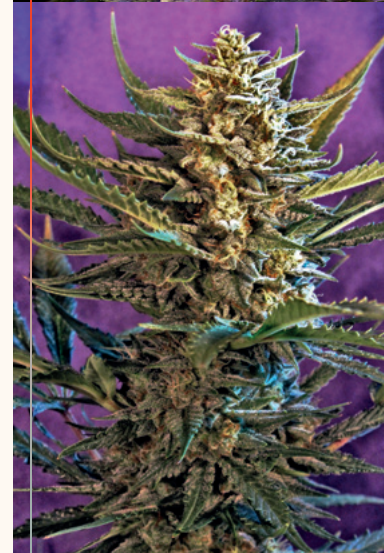


## CAKE BOMB AUTO (GELATO X CHEESECAKE) X RUDERALIS INDICA

Seed type: autoflowering, feminized  
Hybrid: Indica / Sativa.

YIELD: 60-65 DAYS FROM SEED TO HARVEST  
YIELD: 400-500 G/M2 INDOOR/ 70-100 G/PLANT OUTDOOR  
EFFECT: WELL-BALANCED / PHYSICAL / CEREBRAL  
FLAVOUR: SWEET / EARTHY / VANILLA NOTES, CHEESE AND LEMON  
THC: 20%

“Her buds are dense, large and firm to the touch with a wide variety of colors and shades ranging from bright green to violet and purple at the end of flowering. She stands out for her unique and intense aroma and for her complex mix of flavors, sweet and fruity with notes of vanilla and cheese and citrus and earthy nuances...”





New Tees

Don't miss out  
on the Greenbud  
seeds exclusive  
T-shirts of your  
favourite strains.

Buy now on  
[greenbudseeds.com](https://greenbudseeds.com)



*Inhale. Hold it. Share.*

**SMILE**



**GREENBUD**

— SELECTED SEEDS —



F1 EARLY  
VERSION



**Fast-flowering light-dependent genetics.**

**These crosses are the result of crossing a strain dependant on the photoperiod with an autoflowering strain non-dependant on the photoperiod. The result is an F1 hybrid which inherits photoperiod dependence on the one hand and a much faster flower maturing on the other hand. If you want to get the best out of these early or fast strains it is advisable to plant them later in the year, during the months of July or August, in order to harvest in October or November.**



## NL 10 EARLY VERSION

### NL10 X SECRET HYBRID

Seed type: Feminized – F1 hybrid  
Hybrid : 90% Indica, 10% sativa

FLOWERING TIME: 50 DAYS  
YIELD: 400-550 G/M2 INDOOR - 600-700 G/PLANT OUTDOOR  
EFFECT: RELAXING, SEDATING  
FLAVOUR: EARTHY, CITRIC, JUNIPER  
THC: 18%



(\*) Available also in Regular Limited Edition

## CRITICAL EARLY VERSION

### AFGHANI X SKUNK #1 X SECRET HYBRID

Seed type: Feminized – F1 hybrid  
Hybrid : 70% indica, 30% sativa

FLOWERING TIME: 45 - 50 DAYS  
YIELD: 400-550 G/M2 INDOOR - 600 G/PLANT OUTDOOR  
EFFECT: RELAXING, SEDATING  
FLAVOUR: FRUITY, WOODSY, CITRIC  
THC: 16%



**WHITE WIDOW X AK 47 EARLY VERSION**  
**AK47 X WHITE WIDOW X SECRET HYBRID**

Seed type: Feminized – F1 hybrid

Hybrid : 70% indica, 30% sativa

FLOWERING TIME: 50 DAYS

YIELD: 300-500 G/M2 INDOOR - 600 G/PLANT OUTDOOR

EFFECT: CEREBRAL, RELAXING

FLAVOUR: WOODSY, SWEET, HASH

THC: 20%



**BLACK IN BLACK EARLY VERSION**  
**BLACK IN BLACK X SECRETY HYBRID**

Seed type: Feminized – F1 hybrid

Hybrid: Indica

FLOWERING TIME: 45-50 DAYS

YIELD: 300-400 G/M2 INDOOR - 500-600 G/PLANT OUTDOOR

EFFECT: RELAXING

FLAVOUR: FRUITY / SWEET / SPICY / EARTHY AND WOODSY NOTES

THC: 20%



## LEMON PIE EARLY VERSION LEMON PIE X SECRET HYBRID

Seed type: Feminized – F1 hybrid  
Hybrid: Sativa / Indica

FLOWERING TIME: 50 DAYS  
YIELD: 450 G/M2 INDOOR - 550 G/PLANT OUTDOOR  
EFFECT: STIMULATING / CEREBRAL  
FLAVOUR: BITTERSWEET / HAZE / INTENSE LEMON  
THC: 22 %



## GREEN POWER XL EARLY VERSION GREEN POWER XL X SECRET HYBRID

Seed type: Feminized – F1 hybrid  
Hybrid : sativa dominant

HARVEST: 50-55 DAYS  
YIELD: 500 G/M2 INDOOR - 600 G/PLANT OUTDOOR  
EFFECT: STIMULATING, CEREBRAL  
FLAVOUR: SWEET, EARTHY, LICORICE  
THC: 22 %



### **JAWBREAKER 47 EARLY VERSION** **JAWBREAKER 47 X SECRET HYBRID**

Seed type: Feminized – F1 hybrid

Hybrid: 60% sativa / 40% indica

HARVEST: 50 – 55 DAYS

YIELD: 400-500 G/M2 INDOOR - 700 G/PLANT OUTDOOR

EFFECT: WELL-BALANCED CEREBRAL AND RELAXING

FLAVOUR: FLORAL, WOOD, INCENSE

THC: 21 %



### **BLUEBERRY 99 EARLY VERSION** **BLUEBERRY 99 X SECRET HYBRID**

Seed type: Feminized

Sex: sativa dominant

HARVEST: 50 DAYS

YIELD: 450-500 G/M2 INDOOR - 600 G/PLANT OUTDOOR

EFFECT: CEREBRAL, PSYCHO-ACTIVE

FLAVOUR: FRUITY, SWEET, PINEAPPLE, WOOD

THC: 21 %





# LIMITED EDITIONS

**NEW**



**Feminized, Autoflowering, Regular & Early Flowering genetics**

**Where We  
continue our search for  
the perfect individual.**





# LIMITED EDITION



## FEM

LIMITED EDITION

CANDY KUSH X DO-SI-DOS  
BRUCE BANNER X DO-SI-DOS  
STRAWBERRY GLUE  
GELATO X KOSHER KUSH

GET YOURS

## EARLY

LIMITED EDITION

CANDY KUSH  
CHOCO CANDY  
C99

NOW

## REGULAR

LIMITED EDITION

BLACK IN BLACK  
LEMON PIE  
CRITICAL  
STRAWBERRY BANANA OG

GET YOURS

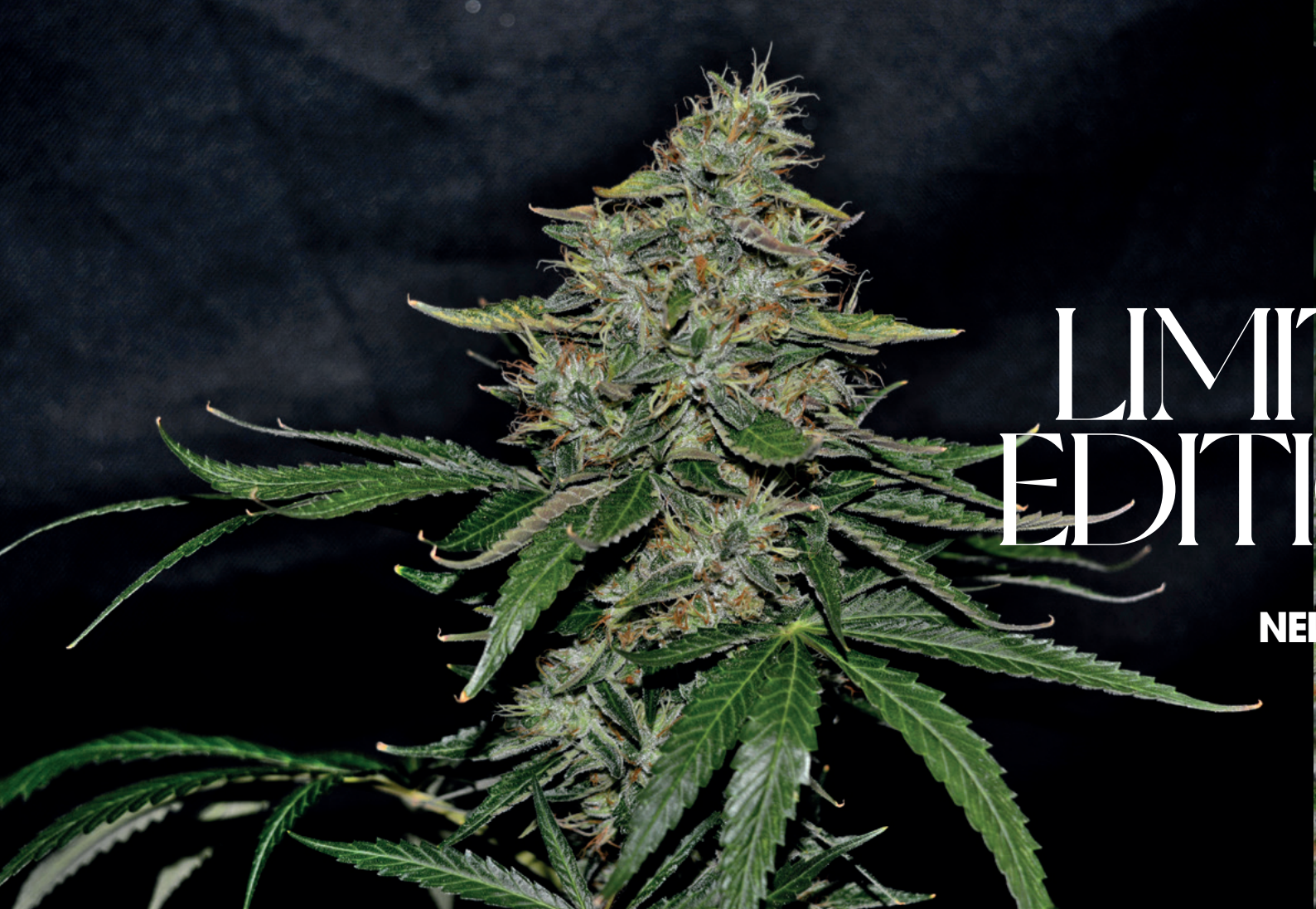
## AUTO

LIMITED EDITION

WEST COAST OG  
GORILLA ZKITTLEZ  
GORILLA BIG BUD  
C99  
GELATO CHEESECAKE  
OG KUSH XL

NOW





LIMIT  
EDITION

NEE





TED  
ONS

W





[www.greenbudseeds.com](http://www.greenbudseeds.com)

# Follow Us



IN WEED WE TRUST - IN WEED WE TRUSTIN WEED

*Inhale. Hold it. Share.*  
SMILE



**Collector's items. Unfit for human consumption and for agriculture. Sales to minors prohibited. Any information about the seeds is given for educational purposes and of preservation. It is not intended to promote or incite the use of controlled or illegal substances.**



**GREENBUD**  
— SELECTED SEEDS —

WWW.GREENBUDSEEDS.COM



NICE CHAP. NO GENERAL

*Inhale. Hold it. Share.*

**SMILE**



NICE CHAP. NO GENERAL

INFO@GREENBUDSEEDS.COM